



Ewell Court House

*Weddings, Civil Ceremonies,
Celebrations & Parties*

Setting the Scene

Our History

Ewell Court House with its fascinating past offers the perfect retreat from the hustle and bustle of everyday life. Set in beautiful, historical grounds complete with fountains, cascades, rock pools and its own secret Grotto, the Grade II listed house stands proud at the entrance to the extensive Green flag parkland.

Its colourful history dates back to the late 1730s when Alexander Bridges moved into the original building on the land, Avenue House. In 1892, John Henry Bridges, who was high in County society, remodelled the house to make it suitable for grand Victorian entertaining.

Capacity

Ewell Court House can accommodate 90 guests for your wedding breakfast and 120 guests for an evening party. The maximum seating available for ceremonies is 100.

Catering

Ewell Court House is not tied to an in house caterer. Instead we have a list of approved caterers. With the provision of relevant references and certification any new professional caterer can be added to the approved list.

The Bar

The bar area is included as part of your hire and is available for your caterer or bar company to serve from.

It is licensed from:

Monday – Thursday
10.00hrs until 23.00hrs

Friday – Saturday
10.00hrs until 00.00hrs

Sunday
10.00hrs until 22.30hrs





The Celebration Rooms

The Social Suite

The beautifully kept social suite with its polished maple floors and high moulded ceilings provide an intimate romantic setting for your special day. The suite leads directly to the tegula paved terrace overlooking the lake.

The Ante room and Social Suite combined can accommodate up to 90 guests for a wedding breakfast.

The Ante Room

Perfect for a more intimate reception with polished oak floor and period features.

The Whist Room

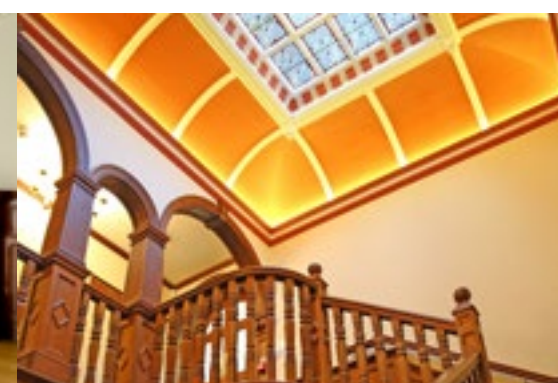
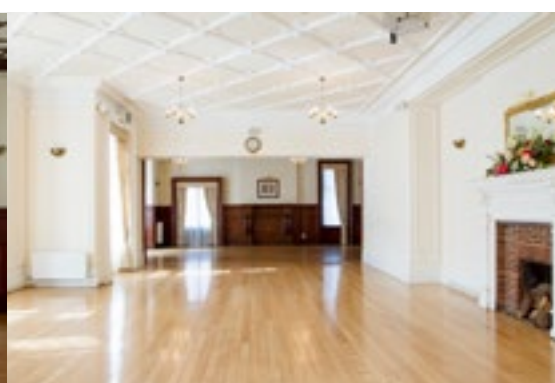
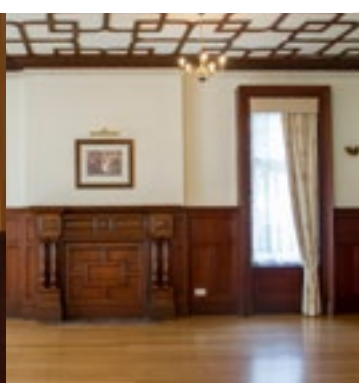
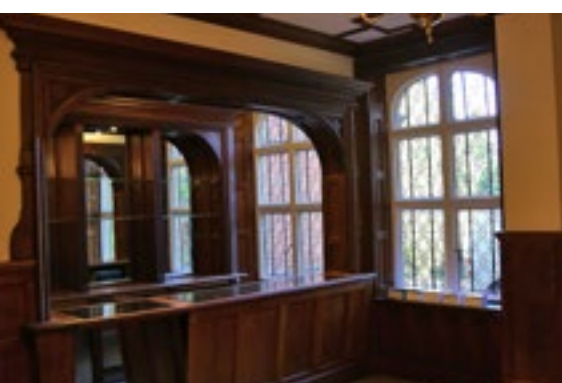
A bright room with an open fireplace and views towards the lake and parkland.

The Bar & Foyer

The bar is surrounded by an ornate timber arch and is positioned by the grand fireplace. The oak panelled foyer leads towards the staircase with double height ceiling and stained glass roof light.

The first floor Meeting Room

A large space overlooking the lake and parkland.



Wonderful Feedback

Our Wedding Testimonials

“Thank you for the support you gave us for our wedding reception. Ewell Court House is a lovely venue and we had a wonderful day. You met all our needs and helped us with all we asked for which we are grateful.”

“A huge thank you for all your help and patience. Everything went smoothly (as you promised it would!) and we appreciate everything you did to make our day so special. We had a wonderful time and Ewell Court House now holds a special place in our hearts. We would not hesitate to recommend it.”

“Thank you very much for all your help. We had the perfect day. Ewell Court House was a fantastic venue and the grounds are beautiful.”





Where the Heart is

Contact Us

Ewell Court House
Lakehurst Road, Ewell
Surrey KT19 0EB

T: 020 8786 7400
E: ewellcourthouse@epsom-ewell.co.uk
W: www.epsom-ewell.gov.uk

Directions

From the Tolworth Junction on the A3 take the A240 towards Epsom. At the third set of traffic lights, turn right into Ruxley Lane. Turn left into Pams Way and follow the signs to the library to Lakehurst Road. At the end of Lakehurst Road, turn right into the entrance to Ewell Court House.

From Epsom Follow the A240 towards Tolworth. Go past the Shell garage on your left. This is followed by a small roundabout, carry straight on here and also at the next set of traffic lights. The road goes uphill for a short distance. Ewell Court Drive is a turning on the left just before the Queen Adelaide Public House which is on the right. Continue to the end of Ewell Court Drive and the entrance is straight ahead.

Parking

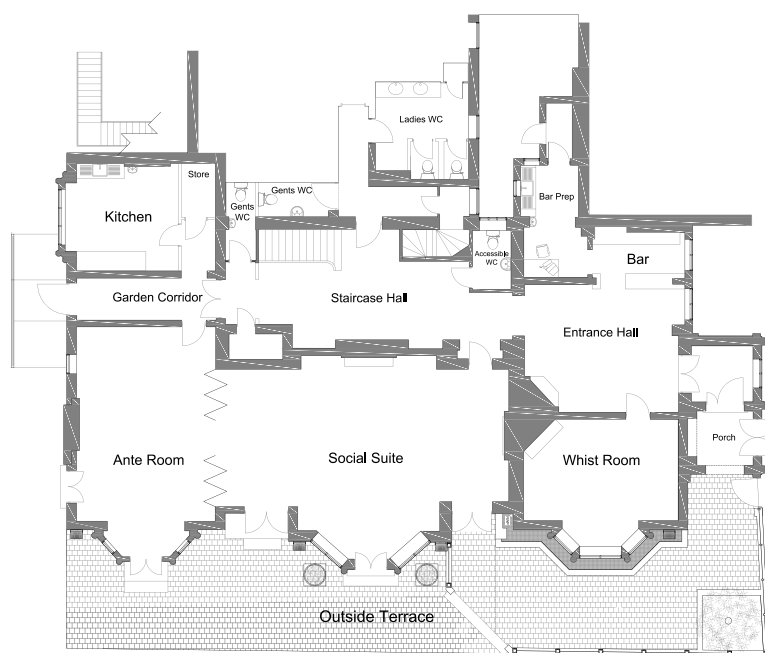
Free parking available

Train

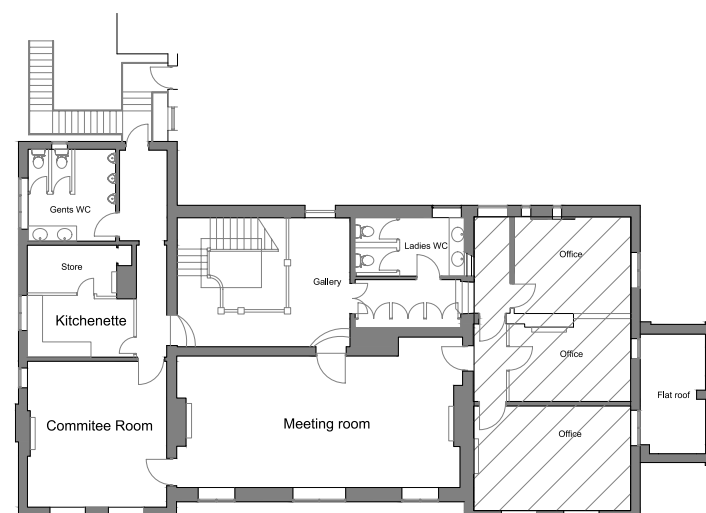
The nearest train station is Stoneleigh Mainline Station. There are frequent services out of London Waterloo and in from Epsom, Dorking and beyond. Stoneleigh is approximately 15 minutes walk from Ewell Court House.

Please plan your journey at www.nationalrail.co.uk

Notes



Ground Floor



First Floor

