

Policing Surrey 2022/23

How your council tax helps fund Surrey Police



Office of the Police and Crime
Commissioner for Surrey

Policing levels sustained over the next year thanks to your contributions.

Residents have told me loud and clear that they want to see more police officers in our communities tackling those issues that matter most to them.

This year's 3.5% increase in the policing element of your council tax means Surrey Police can sustain their current levels during 2022/23, and give the right support to those extra 98 officers we are bringing in this year as part of the Government's uplift programme.

It is always difficult to ask the public for more money, especially in the current financial climate. But I wanted to ensure we didn't take a backward step in the service we provide or risk undoing the hard work that has gone into increasing police numbers in recent years.

I launched my Police and Crime Plan in December which was firmly based on the priorities you have told me are the most important. They include road safety, tackling anti-social behaviour, combatting drugs and ensuring the safety of women and girls in our communities.

I believe we must make sure the right resources are in place to deliver on those priorities and maintain that vital role our police teams have in keeping you all safe.



Lisa Townsend
Police and Crime
Commissioner for Surrey

What will you pay for policing in Surrey in 2022/23?

Band A	Band B	Band C	Band D
£197.05	£229.89	£262.73	£295.57
Band E	Band F	Band G	Band H
£361.25	£426.93	£492.62	£591.14

Where the money comes from

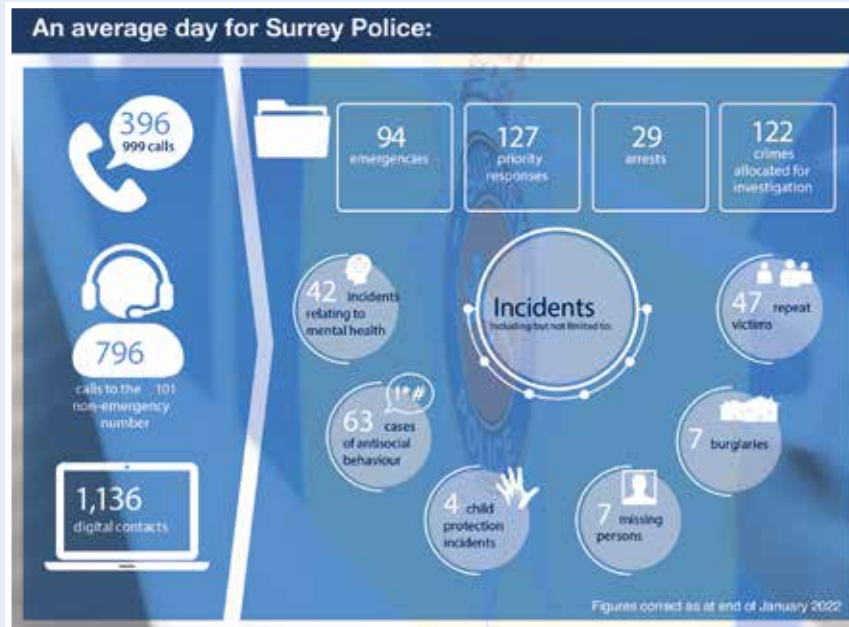
55%

£151.30m
Local taxation

45%

£124.40m
Central funding

	2021/22 £m	2022/23 £m
Precept requirement	143.40	150.80
Collection Fund	-1.10	0.50
Total local funds	142.30	151.30
Tax-base ie. number of equivalent Band D properties	501,847	510,161



How the money is spent and funded

	2021/22 £m	2022/23 £m
Employees	216.80	231.20
Premises	12.40	12.20
Supplies and services	41.80	44.20
Transport	5.40	4.90
Operational income	-14.70	-13.40
Gross Budget:	261.70	279.10
Use of Reserves	0.30	3.40
Central Government	119.10	124.40
Local taxation	142.30	151.30
Gross funding	261.70	279.10



Police and Crime Plan for Surrey

My Police and Crime Plan outlines the areas that Surrey Police will focus on, and the key areas of performance that will be monitored through my regular meetings with the Chief Constable.

Scan the QR code to learn more:





StreetSafe

An online tool to enable people to report locations where they feel, or have felt, unsafe.

Visit: surrey.police.uk/notices/street-safe

In an emergency always dial 999

Employee information

Budgeted as at 31 March 2022	2021/22	2022/23
Police officers	2,107	2,205
Operational and support police staff – this includes Police Community Support Officers (PCSOs)	1,978	1,961
Total	4,085	4,166

Surrey is fortunate to have a growing family of volunteers including 170 Police Support Volunteers, 100 Volunteer Police Cadets and 146 Special Constables. Volunteering during the pandemic has provided vital support across the Force through challenging times.



Contact us

 [surrey-pcc.gov.uk](https://www.surrey-pcc.gov.uk)

 surreypcc@surrey.police.uk

 01483 630200

 PO Box 412, Guildford, Surrey GU3 1YJ

See an accessible version of this information at www.surrey-pcc.gov.uk/council-tax-2022-23

    **nextdoor**

Cover image courtesy of Charlotte Harrington, Surrey Police.