

Borough Insight

ISSUE 76

Shiver me
timbers!



*Keeping **you** informed...*





Epsom & Ewell

**A local Estate Agent with
local knowledge**

we are **The Local Agent**

For a free valuation and the best rates around, call us on:

01372 253 252

sales@thelocalagent.co.uk



The local agent

thelocalagent.co.uk



Contact us

Borough Insight is published by Epsom & Ewell Borough Council for residents and delivered free of charge to households in the borough.

If you have any queries on its contents please contact: **The Editor, Borough Insight, Epsom & Ewell Borough Council, Town Hall, The Parade, Epsom, Surrey KT18 5BY**

Phone: **01372 732000**

Email: **boroughinsight@epsom-ewell.gov.uk**

Designed and printed by: The PPL Group, Global House, 1 Ashley Avenue, Epsom, Surrey KT18 5AD
Tel: 01372 743377

Email: paul.dasilva@theppgroup.com

Borough Insight is printed on paper from sustainable sources. Please read and recycle this copy.



Advertising opportunities in Borough Insight

Would you like the opportunity to promote your business to 32,000 households? Epsom & Ewell Borough Council offers advertising space at competitive rates in Borough Insight magazine.

For further information contact The PPL Group on 01372 8478 89 or email paul.dasilva@theppgroup.com

Epsom & Ewell Borough Council does not accept responsibility for, sponsor or endorse any products or services offered by advertisers in this magazine.

e-Borough Insight

For the latest events, community information and lots more delivered straight to your inbox each month, subscribe to e-Borough Insight at **<https://insight.epsom-ewell.gov.uk/subscribe>**

Social media

For the latest borough council news and information, alerts and updates, why not visit our website **www.epsom-ewell.gov.uk**

Find us @EpsomEwellBC on:



**KEY
PRIORITY:**
Supporting our
community



Mayor's message



Councillor John Beckett

Alison and I cannot believe how quickly the last three months have flown by. It is an honour to be the Mayor of Epsom and Ewell and a hugely rewarding experience.

The Mayor and Mayoress at Glyn School, Epsom

Since May we have been invited to various events, both within the borough and across Surrey. These have included Epsom College Founders Day, The Derby, Surrey Youth Games and the Sergeant Green Memorial ceremony, as well as supporting military personnel at Armed Forces Day services.

There have been so many wonderful invitations from the borough's schools, colleges, care homes and charities. At many of these events, I have been asked to present certificates and medals and of course to say a few words. I have undertaken many firsts as Mayor and I would never have thought I would cut ribbons, break ground using a silver spade or have my photograph taken with the Dulux dog!

The events are so varied and every single one is different. I have met so many wonderful people and I would like to give special thanks to the many incredible volunteers who offer amazing support to our community.

My charity committee has been busy organising a variety of successful events to raise funds for and the profiles of my three chosen charities:

- PHAB (Physically Handicapped and Able Bodied)
- Motor Neuron Disease Association (MND)
- Alzheimer's Society

We have an exciting selection of upcoming events and I hope that you are able to join us and have some fun while helping to raise funds for these worthwhile charities. For more information visit **www.mayorscharitiesepsom.org.uk**

On a final note, don't forget to nominate a deserving young person for the Epsom & Ewell Young Champions Awards 2020. There is more information about these awards elsewhere in this issue. I am very keen to support our community and the organisations that operate within our borough, so if you feel that I can help at an event you are organising then please get in touch by emailing: **mayor@epsom-ewell.gov.uk**

Photo courtesy of Glyn School



£230,000 for community projects

Each year, your local councillors choose how to allocate the 'neighbourhood portion' of the Community Infrastructure Levy.

The Community Infrastructure Levy allows us to raise funds from developers undertaking new building projects in the borough. It is used to support new physical and social infrastructure and also to improve existing facilities. Under legislation, 80% of total levy collected has to be allocated towards borough wide infrastructure and up to 5% towards administration.

In addition, 15% of the levy must be spent on priorities agreed with the local community. This 15% is referred to as the 'neighbourhood portion' of the levy.

In Epsom and Ewell, councillors and community groups are able to bid from the neighbourhood portion levy for projects. Winning bids are then selected by a panel of councillors.

We welcome community bids. If you are interested in submitting a future bid, details of the bidding process for 2020/21 are available on our website.

The successful projects this year are:

- ▶ Epsom Common - a range of infrastructure improvements including new benches and safety provisions.
- ▶ Horton Country Park – extending the footpath restoration.
- ▶ 2nd Epsom Scout Group – grant towards the refurbishment of the scout hut.
- ▶ Borough wide – resurfacing of eight playgrounds and replacement of some playground equipment.
- ▶ Borough wide – Provision of external cabinets, allowing 24/7 access to existing community defibrillators.
- ▶ Mo-Ichido Martial Arts Club – grant towards the refurbishment of the new premises for the Horton Honbu Dojo.



**KEY
PRIORITY:**
Supporting our
community



Planting the Market Place

The new trees are due to be planted in the Market Place this month in specially designed tree pits.



Over many centuries the Market Place has been a centre for congregation and traffic which has taken its toll on the subsoil compacting it into a hostile anaerobic environment for tree growth.

In the 1980s, the re-development of the Market Place saw a further surface laid on top of the old road. Later trees were planted through these hard surfaces and despite having planting pits they failed to flourish. The previous trees rooted into the confines of their planting pits and became effectively bonsai'd, as roots and branches could spread no further.

Following consultation, the bold step was taken to remove the struggling trees and start again.

So why have we been digging in the Market Place so long? Well one of the reasons is we have been improving the underground substrate for the new trees. Compacted layers of subsoil have been removed and replaced with large volumes of special tree soil held within an underground cellular system. To supplement the available rooting volumes supersize planting pits have now been created.

The planting layout has been carefully designed to avoid underground services and ensure the trees have generous growing space above ground.

New trees for a bright future

We're planting more trees than were in the Market Place previously. The three new tree species have been carefully selected for the specific environment of the Market Place and resilience to climate change.

- **Small Leaved Lime (*Tilia cordata* "Rancho").** Studies of preserved pollen grains in peat have proven Small Leaved Lime is one of our oldest native tree types. This particular variety has an upright architectural form that will create the main boulevard style tree-scape.

- **Pagoda tree (*Styphnolobium japonicum*).** This tree is native to China and was introduced to England in 1753 via Japan. It is believed that a tree in Kew Gardens is one of the first Pagoda trees to arrive in the UK and is still going strong some 260 years after being planted. Pagoda trees can be a little leggy at first but will settle down to form graceful specimens with fissured bark and delicate pinnate leaves that give dappled shade.
- **Red Maple (*Acer rubrum*).** Introduced to the UK in 1656 from North America, the red maple is able to adapt to a wide range of environmental conditions and has a high tolerance to pollution and road salt. They are fast growing trees with a striking fiery red autumn colour.

We are confident the new trees will perform well, provide a wide range of environmental benefits and become a great asset to the overall quality of the Market Place.

Progress report

We're on schedule to complete the upgrade to the Market Place early next year. Work will be halted over the retail Christmas period and resume in the New Year. The final phase of the work comprises the section directly outside The Assembly Rooms which will emulate the historical stepped aspect and which will provide an area suitable for outside entertainment.

**KEY
PRIORITY:**
Supporting our
community



**KEY
PRIORITY:**
Supporting
businesses and our
local economy



**KEY
PRIORITY:**
Keeping our borough
clean and green





Christmas at the Playhouse

EPSOM Playhouse

Shiver me timbers!

Not to be overshadowed by last year's record-breaking pantomime, get ready for this year's epic as we travel to Neverland (second star to the right and straight on till morning).

Set sail for Neverland and prepare for galleons of laughter as we take you on a swashbuckling adventure to the magical world of Peter Pan. Meet the Darlings, Hook and his crew of pirates, Tiger Lily, the lost boys, the hungriest of crocodiles and of course the mischievous Tinkerbell.

Our modern adaption on JM Barrie's classic is retold in true pantomime style; full of slapstick and comedy mayhem performed by an exceptionally talented cast. Spillers Pantomimes promise something for everyone, with stunning scenery, fabulous costumes, dancing, singing and always lots of laughter - Peter Pan is the perfect festive family show full of fun, fairy dust and pirates galore.

The Playhouse is offering a range of times and performance types to suit everyone including large groups, families, school visits, individuals and senior citizens.

New for this year, one performance is being offered as a special relaxed presentation with a reduction in sound levels, more subtle lighting, a casual attitude to movement in and out of the auditorium, chill-out areas and specially trained theatre staff to make an inclusive experience, perfect for anyone who would benefit from a calmer environment.

Peter Pan runs at the Epsom Playhouse from Saturday 14 December to Sunday 5 January.

Hook your seats now!



Classic Christmas concert

Epsom Symphony Orchestra presents an annual classic with a concert featuring some seasonal offerings including Mozart's Sleigh Ride, Prokofiev's Cinderella Suite and Rimsky-Korsakov's Christmas Eve Polonaise. There's a lot more, from the Snow Queen, Carol Fantasia and the Blue Danube Waltzes. Climaxing in a celebration

of traditional Christmas carols, it's no wonder this is becoming a favourite start to yuletide.

The Epsom Symphony Orchestra Christmas Concert is on Sunday 1 December.



Santa's Christmas Countdown

There's nothing Santa loves more than starting the countdown to Christmas by opening the windows of his special Christmas calendar. But when he tries to begin the countdown this year, disaster – the calendar is broken and all the magical goodies inside have gone missing! Join Dotty the elf, Dasher

the reindeer, Jack Frost and Pompom the penguin in a fun, festive, musical adventure to help fix the Christmas calendar.

This is a 45 minute, interactive family show, particularly suitable for 2-7 year olds.

Santa's Christmas Countdown starts on Saturday 7 December and runs all the way through to Christmas Eve.



School Leavers • Adult Education • Apprenticeships • University-Level • Free Distance Learning

Nescot, the college of choice

Join us at one of our **open events**:

2019

• NOV •

20

WEDNESDAY

OPEN EVENING
4.30PM-7.30PM

2020

• JAN •

15

WEDNESDAY

OPEN EVENING
4.30PM-7.30PM

2020

• MAY •

20

WEDNESDAY

OPEN EVENING
4.30PM-7.30PM

2020

• JUN •

20

SATURDAY

SUMMER FAIR
11AM-2PM

Register online at www.nescot.ac.uk/open



NescotCollege



@Nescot



Nescot2



NescotCollege

020 8394 1731

Nescot, Reigate Road, Ewell, Epsom, Surrey, KT17 3DS

 **Nescot**



Focus on enforcement

As previously reported in Borough Insight, earlier this year, we secured a temporary three month injunction that protected areas of our land vulnerable to unauthorised encampments.

Unauthorised encampments

The Court has now made this injunction permanent. We succeeded in securing this injunction because we were able to demonstrate the harm and financial impact from significant fly-tipping, criminality and anti-social behaviour resulting from a number of previous unauthorised encampments.

As a result of this injunction, there has been a dramatic drop in the number of such encampments within the borough this year. Previously the more limited legal remedies available to us meant that often took several weeks before a positive outcome could be achieved. This summer, those few groups that have located themselves on our land without permission have left reasonably quickly, once they were formally made aware that we had an injunction in place. In two incidents we had to take action with the police and court bailiffs to implement the injunction and we had cleared the encampments in 24 hours.

It is important to note that the injunction covers only borough council land and private landowners are responsible for the protection of their land.

There have been calls for provision for permanent transit sites in Surrey to remove the need for unauthorised encampments (there are none in Surrey at present) and this is something being addressed at a county level. While we do not have a permanent transit site within the borough, we do operate the annual temporary site on Epsom Downs, which is open for Derby week – this year approximately 70 vehicles were hosted.

Food hygiene

As you may have read in the local press we recently prosecuted a local Chinese takeaway for consistent poor food hygiene standards – following the prosecution the takeaway is now operating within acceptable levels of safe food hygiene.

Our environmental health team regularly visit all food outlets within the borough to ensure safe practices of food handling, storage and preparation are being undertaken. Those establishments that fail to meet the required standards are offered advice and help to meet a satisfactory level. However in certain circumstances prosecution is the only option to ensure that people are safe.

Rogue landlords

We also took action on two property owners who were putting tenants' and prospective tenants' safety in jeopardy. The two were both found guilty in separate prosecutions heard at Guildford Magistrates' Court back in June. The breaches mainly related to fire safety, means of escape and lack of smoke detection. There were also offences relating to inadequate sound insulation and ventilation issues.

Councillor Eber Kington, Chairman of the Council's Strategy & Resources Committee commented, "we take no pleasure in taking local residents and business people to court however, when people's lives are put at risk and our recommendations, warnings and instructions are deliberately disregarded, we will not hesitate to prosecute."



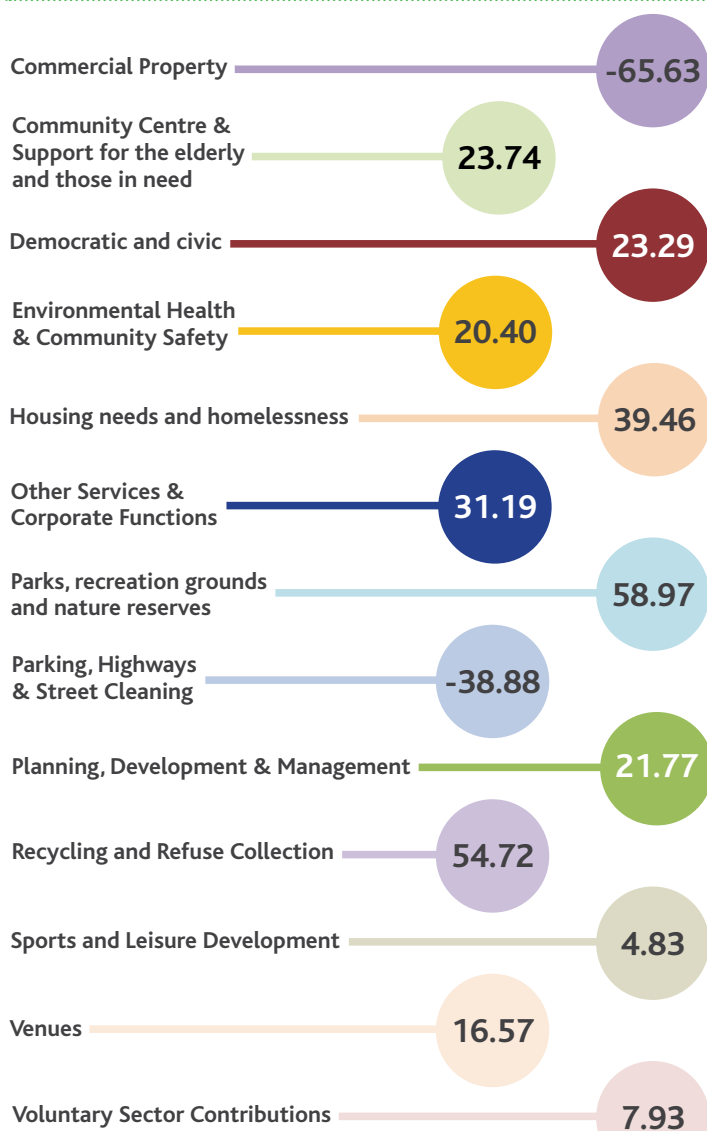
Delivering Services

how we spend your council tax

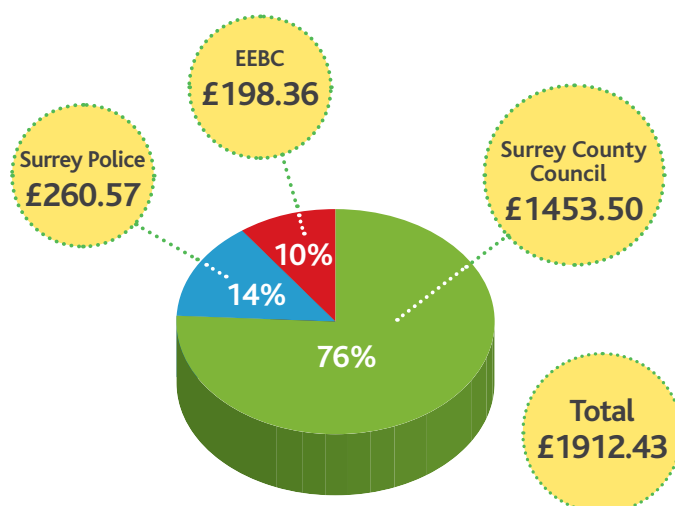
Please note, figures relate to 2019-20 budgets and are expressed as Band D equivalents. Some service areas have minus signs in front of them because these services generate net income.



Borough Council expenditure per household



2019/20 Council Tax - Band D



How your Borough Council Tax is calculated:

	£'000	Per property £
Total Budget for Council services (2019/20)	6,387	194.13
Retained Business Rates	1,585	48.18
Prior year surplus on Council Tax & deficit on Business Rates	-1,724	- 52.42
Council Tax	6,525	198.36

KEY PRIORITY:
Managing our resources



Climate change

Around the globe, the results of climate change are becoming readily apparent. Global emissions are reaching record levels and show no sign of peaking.



The last four years were the four hottest on record and winter temperatures in the Arctic have risen by 3°C since 1990. Sea levels are rising, coral reefs are dying and we are starting to see the life-threatening impact of climate change on health, through air pollution, heatwaves and risks to food security.

This autumn at a Climate Action Summit, UN secretary general António Guterres challenged the world to reach net-zero emissions by 2050 and, more immediately, to reduce carbon emissions by 45 percent in the next 12 years, in an effort to hold increases in global temperatures to 2°C above preindustrial levels. The UK government target is for Britain to reduce carbon emissions by 80% (compared to 1990 levels) by 2050.

Councillors here have agreed that we too have a role in helping address the serious and accelerating impact on the environment and people's lives resulting from climate change and have agreed to establish an Epsom & Ewell Borough Council climate change action plan, with targets for the council to cut its environmental impact and steps to become carbon neutral.

We have already taken steps to be more sustainable within our activities and operations, including improving biodiversity within our green spaces and curtailing the use of single use plastics. As we develop our action plan we will also be addressing

issues such as the lack of electric vehicle charging points and, via the forthcoming local plan, encouraging more sustainable transport options, including increasing the opportunities to walk and cycle within the borough.

Don't let your recycling go to waste

In caring for the environment, we all want to recycle as much as we can, and Epsom and Ewell residents are doing a fantastic job, with recycling rates above the national average.



However, an increasing number of incorrect items are making their way into the recycling, which can prevent good material from being recycled. This isn't just a local issue but is being seen nationally. Sometimes what we're getting is non-recyclable rubbish that should go in your black refuse bin. And sometimes it's recyclable stuff that should actually go in your other recycling containers. Either way, it's expensive to sort this out and it can reduce the amount that actually gets recycled.

Rejected recycling ends up as general waste and is burnt or ends up in landfill both of which is what we are all trying to avoid.

We're often asked what happens to your recycling (we have a section on our website dedicated to the subject). A variety of commercial companies turn your recycling into other uses. Recycling is a global industry and we've been careful to ensure that your recycling doesn't end up dumped in other countries. Most of your recycling is reprocessed in the UK but some is treated within Europe and/or Turkey. Exporting recycling to Europe post Brexit is one of the Brexit issues we're having to keep a close eye on.

Working Group

An Environment and Sustainability Working Group has been established to oversee the development of our new climate change action plan with targets to cut our environmental impact and steps to become carbon neutral.

The working group, comprising a cross-section of your elected borough councillors and representing all the political parties on the council, will also evaluate specific actions to promote wider understanding and positive actions through the variety of relationships we have with other organisations operating in the borough, including those subject to formal contracts.



Remember
No refuse collections
in Christmas week

Christmas 2019-20 bin collections

Christmas and New Year

IMPORTANT

As usual, there will be
no refuse collections
during **Christmas week**

Christmas Week

Recycling bins **ONLY**:



Normal collection day

Actual collection day

Monday 23 December

Normal collections

Tuesday 24 December

Monday 23 December ↑

Wednesday 25 December

Tuesday 24 December ↑

Thursday 27 December

Tuesday 24 December ↑

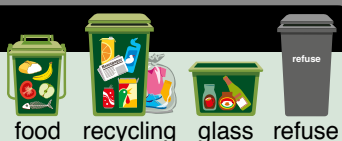
Friday 27 December

Normal collections

Refuse collections start again
in New Year's week

New Year's Week

Put out these bins:



Normal collection day

Actual collection day

Monday 30 December

Normal collections

Tuesday 31 December

Normal collections

Wednesday 1 January

Thursday 2 January ↓

Thursday 2 January

Friday 3 January ↓

Friday 3 January

Saturday 4 January ↓

There are no garden
waste collections
during Christmas or
New Year's weeks



After Christmas

Normal collections

Normal collection schedules start again week
commencing **Monday 6 January**.

Check your Garden waste collection day at
www.epsom-ewell.gov.uk/gardenwaste

Real Christmas tree recycling

In January we offer **free real Christmas tree
recycling for all residents**.



Remove all decorations and leave your
real Christmas tree next to your bins, and
we'll collect it for recycling (see your
bin label for details).

Leave your bins out for collection in a clearly
visible place on the kerbside by 6:30 am on
collection day.



News bytes

News featured or about to featured online including in e-Borough Insight, your monthly borough update on news, features, events, community info and lots more! (Subscribe at <https://insight.epsom-ewell.gov.uk/subscribe>).

Green enforcement

We are introducing a new tool to help us tackle anti-social behaviour including illegal parking on zigzag lines outside schools, investigating fly tips and responding to noise nuisance. The car, in line with our climate change undertaking, is fully electric and has been funded in partnership with the Surrey Police and Crime Commissioner.



Winning green spaces

Epsom Common, Ewell Court Park, Alexandra Recreation Ground and Rosebery Park have once again been awarded the prestigious Green Flag award – the mark of a quality park or green space. This international award, now into its third decade, is a sign to the public that the space boasts the highest possible environmental standards, is beautifully maintained and has excellent visitor facilities. The four green spaces that were entered for the award were selected, as they are broadly representative of the different green spaces within the borough.

Nonsuch Park secured the Silver Gilt Award for the third year in the South and South East in Bloom Awards. This year, the park achieved its highest score and was the only 'free to enter' park in its category.

The awards are a testament to the work and dedication of our parks team and the volunteer groups.

RingGo now available!

As part of the reinvestment in our car parks, RingGo cashless parking is now available in our pay and display car parks. With phone parking: you don't have to save up change; you don't have to trek to and from the machine in the rain; and you don't need to put a ticket on your dashboard.

If you have an iPhone or Android device, you can download and use the RingGo smartphone app to register and pay for your parking. Or call the standard rate telephone number 01372 240 111 (shown on signs) at the time you want to park. If



you want to save time, you can pre-register in advance either through the app or at www.RingGo.co.uk

The optional RingGo text reminders also help. These notify you 10 minutes before your parking

time is due to run out, leaving you time to either remotely extend your stay or return to your car. Payment using cash or card is still available in all our car parks.

For more info see:

<https://www.epsom-ewell.gov.uk/car-parks>



Local giving for local need

The Epsom & Ewell Community Fund is independently operated by the Community Foundation for Surrey, which inspires local giving for local need.

The Fund supports local voluntary groups who are making a difference to the quality of our community by awarding grants to help fund their work.

Residents are aware that sitting alongside the splendour of our wonderful green spaces is, sometimes invisible, poverty and deprivation. In 2018 the Epsom & Ewell Foodbank saw a 40% rise in demand. Loneliness among older people in the borough is rising, with the number of people over 65 who live alone in Epsom and Ewell projected to increase by around 30% by 2025.

The Epsom & Ewell Community Fund makes it easy for local residents and businesses to support the breadth of needs in the Epsom and Ewell community by:

- Exclusively supporting local community projects
- Pooling donations from companies, individuals and families to make a bigger impact
- Providing a sustainable source of funding to support evolving community needs
- Developing the capacity to respond to local issues as they arise.

While there are many national charities that work tirelessly to address these issues, the Epsom & Ewell Community Fund raises money locally to invest back into our community to make a direct and significant impact.

The Community Fund arranges all the administration and legal red tape usually associated with charity giving minimising the work and responsibility for donors.

“The number of people over 65 who live alone in Epsom and Ewell projected to increase by around 30% by 2025”

If you would like to know more about the Epsom & Ewell Community Fund, please visit:

www.cfsurrey.org.uk/fund/epsom-ewell-community-fund

Registered charity no:
1111600

Nominate your champion today!

The Epsom and Ewell Young Champions Awards is a celebration of the great work our young people do for our community.



Grace Wilson aged seven, winner of the Young Carer Award 2019. Grace was nominated for her incredible efforts as a young carer

Epsom and Ewell Young Champions Awards 2020

The awards recognise and celebrate the outstanding achievements of our borough's brilliant young people - those who have gone above and beyond to help their local community and support others.

The Mayor of Epsom and Ewell, Councillor John Beckett will present the awards to all the winning Young Champions at a celebration event in the New Year.

We are looking for nominations from friends, neighbours, schools, youth groups and voluntary organisations within the borough.

The award categories are for either an individual or a group.

The categories broadly cover nominations that range from outstanding community and voluntary service, caring responsibilities for a family member, inspirational determination in unimaginable circumstances, excellence through commitment in sport to championing environmental initiatives and fundraising for charity.

The awards are sponsored by local businesses, along with Epsom & Ewell Borough Council.

Help us celebrate young people being the best they can be - nominate your Epsom and Ewell Young Champion for 2020 today!

For detailed information for each award category, nomination criteria and to download a nomination form visit www.epsom-ewell.gov.uk/mayor

Please send entries to mayor@epsom-ewell.gov.uk the closing date for nominations is Friday 10 January 2020.

“The awards recognise and celebrate the outstanding achievements of our borough's brilliant young people.”

**KEY
PRIORITY:**
Supporting our
community





Kingsway Heating and Bathrooms Ltd are the culmination of 2 well respected companies, M.D Gas and Heating Services and A.P Property Solutions.

Offering over 20 years of combined knowledge in gas, heating, plumbing and bathrooms, Kingsway Heating and Bathrooms are a reliable, professional and honest company to turn to.

With quick response times we are on hand to tackle all issues concerning heating and plumbing in domestic properties. No job is too big or too small and with low call out costs and free quotations then why not give us a call.




- Full gas central heating installation
- Boiler changes
- Bathroom design and installation
- Boiler servicing and breakdown
- Landlords Gas safety certificates
- Power flushing
- Radiator replacement and relocation.
- Nest and Hive installation



Kingsway Heating and Bathrooms Ltd
Tel: 078 0989 1383

Email: info@kingswayheating.co.uk

 [kingsway_heating_bathrooms](https://www.instagram.com/kingsway_heating_bathrooms)

It's about people...

Rough sleeping is the most extreme and visible form of homelessness.



Although we will always seek to help those sleeping rough, in many cases the individuals are not eligible for formal help under homelessness legislation.

There has been a recorded increase in those sleeping rough across the UK and we're witnessing that here too. However this isn't about statistics; it's about people.

We are committed to working with partners to link rough sleepers, who often have complex needs, with the services that can help them find a way off the streets and into settled housing.

As the weather gets colder rough sleepers are particularly vulnerable and all local authorities have a legal obligation to operate a severe weather emergency protocol (SWEP), which aims to get rough sleepers into emergency accommodation during periods of below zero night-time temperatures.

Our housing team and eSOS (East Surrey Outreach Service), our specialist rough sleeper outreach service, are aware of the individuals rough sleeping within the borough as a result of reports we receive from the public, our partners and council staff.



We proactively and regularly engage with all those sleeping rough in the borough. Offers are made of practical help to find and secure accommodation for the individuals and we will continue to engage with and support them to try to find longer term solutions. Last year eSOS worked with 249 individuals across the four council areas of Epsom and Ewell, Reigate and Banstead, Mole Valley and Tandridge.

The four councils also combined to successfully bid for government funding for a 'Navigator' post. This specialist focusses on developing relationships with individuals with the most complex issues who are sleeping rough. The Navigator helps them to access appropriate local services and provides long term support to help them into settled accommodation. They will also aid in their recovery and in finding employment or training, with the aim that individuals can avoid returning to the street.





ALAN WILSON

DENTISTRY

A BETTER DENTAL PRACTICE



We can help you change how
your mouth looks and feels.

Half Price Consultation

Was £75 Now £37.50



ORTHODONTIC APPOINTMENTS NOW AVAILABLE

Early morning, late evening and Saturday appointments.

- Painless, on-time dentistry
- Implant Dentistry
- Cosmetic Dentistry
- Invisible braces - Invisalign
- Teeth Whitening
- Anti -Wrinkle injections
- We look after everyone from the young to the old and wise

Follow us on  Alan Wilson Dentistry

 alanwilsondentistry3

FIND OUT HOW

Call: 01372 417872

Visit: www.alanwilsondentistry.co.uk

3rd Floor, 55 High Street, Epsom, Surrey KT19 8DH

Email: info@alanwilsondentistry.co.uk

Keep well this winter

Bugs seem to be everywhere during the colder months. The best way for you to keep well is to do everything you can to prevent yourself from getting ill in the first place - or if you fall ill, to take the right steps to get better quickly to stop things from getting worse.



Keep well – stay active

The more we keep moving the better for our circulation and heart health. Being active every day helps you to stay healthy. As winter approaches it can be tempting to hang up our exercise gear, eat more food and hibernate. However, exercise can help increase energy, banish those winter blues and help maintain a healthy body weight.

Even a brisk walk can make a positive difference; however breathing in cold air can increase the risk of chest infections, so wrap a scarf around your mouth to protect your lungs from the cold and if you are going out after dark make sure you can be seen.

Keep well – stay hydrated

It is important to stay hydrated in the winter. It can be easier to become dehydrated in the winter as the cooler weather can lead to a decreased thirst sensation, causing you to drink less.

It is important to have hot meals and drinks regularly throughout the day and keep active in the home. Eating and drinking well can help improve wellbeing, manage weight and reduce the risk of developing illnesses and diseases. Food is also a vital source of energy, which helps keep the body warm.

Keep well - stay warm

Living in a cold home can be very damaging to physical and mental health. Wearing several thin layers of clothes is an effective way to keep warm so wrap up warm, inside and out. If you have heart or respiratory problems you should stay inside during a cold snap. Older people can avoid going out and risking a fall in icy weather by stocking up the freezer with milk, bread, ready meals and even soup.

Keep well – get advice

If you start to feel unwell, even if it's just a cough or a cold, don't wait for it to get worse. Seek immediate advice from your nearest pharmacist. Speak with your local community pharmacist about what medicines are suitable for you and your family, particularly if this includes children as they may require something different to you.

If you're eligible for a free flu vaccine, talk to your local community pharmacist or GP, both of them can offer vaccinations.

Eating and drinking well can help improve wellbeing, manage weight and reduce the risk of developing illnesses and diseases.



MB ROOFING

Chessington Ltd

MB Roofing offers a friendly and professional service with over 25 years of roofing experience.

We offer competitive prices and also offer a 10 year workmanship guarantee backed by the Confederation of Roofing Contractors on all new work undertaken.

Our work includes, flat roofing, pitched roofing, lead work, repairs, fascia, soffits, guttering and re-bedding and pointing of hip and ridge tiles.

Please feel free to contact us on:

Mobile: 07714256887 Tel: 0208 2415866

Email: info@mbroofingchessingtonltd.co.uk



To view our work and over 460 reviews please visit

www.checkatrade.com/mbroofingchessington
or www.mbroofingchessington.co.uk



QUALITY COACH HOLIDAYS
& DAY EXCURSIONS FOR
2019

UK AND CONTINENTAL
COACH HOLIDAYS

Free Home Collection

Friendly Tour Managers

3 Star Plus Quality Hotels

Modern Luxury Coaches

Excursions and Entrances Included

GARDINERS NMC

Call 01372 610000 or
Visit www.gardinersnmc.co.uk

Charity Christmas Tree Sale

Proudly supported by:



We are selling UK grown Christmas trees in a variety of sizes to raise funds for 4th Ewell (Nonsuch) Scout Group. Run entirely by volunteers, all proceeds go towards supporting the Group.

Friday 29 November, midday - 8pm.

Saturday 30 November & Sunday 1 December, 9am - 4pm.

Friday 6 December, 10am - 8pm.

Saturday 7 & Sunday 8 December, 9am - 4pm.

Find us at 4th Ewell (Nonsuch) Scout HQ, 1 Bluegates, London Road, Ewell, KT17 2SA. We deliver locally, accept cards and you can buy or pre-order online.

xmastrees.org.uk

#nonsuchtrees



Registered Charity No. 305718



Scouts
4th Ewell (Nonsuch)

AJMAUTOS

- Servicing of most vehicles
- MOT arranged
- Vehicle repair
- Only £40 per hour plus parts

FULLY
QUALIFIED
& INSURED

Alex Moore
(AJM Autos)
176 Curtis Road
Epsom
KT19 0LJ

07585226117

Useful contacts

Epsom & Ewell Borough Councillors

Auriol

John Beckett:
JBeckett@epsom-ewell.gov.uk
020 8393 8208

Peter Webb:
PWebb@epsom-ewell.gov.uk
07941 231072

College

Nigel Collin:
NCollin@epsom-ewell.gov.uk
07771 712050

David Gulland:
DGulland@epsom-ewell.gov.uk
07801 573431

Julie Morris:
JMorris@epsom-ewell.gov.uk
01372 744297

Court

Kate Chinn:
KChinn@epsom-ewell.gov.uk
07775 725818

Robert Geleit:
RGeleit@epsom-ewell.gov.uk
07791 519048

Debbie Monksfield:
DMonksfield@epsom-ewell.gov.uk
07763 512428

Cuddington

Lucie Dallen:
LDallen@epsom-ewell.gov.uk
01372 732791

Robert Foote:
RFoote@epsom-ewell.gov.uk
07519 460761

Phil Neale:
PNeale@epsom-ewell.gov.uk
07711 716255

Ewell

Christine Cleveland:
CCleveland@epsom-ewell.gov.uk
07974 433934

Humphrey Reynolds:
HReynolds@epsom-ewell.gov.uk
020 8393 4753

Clive Woodbridge:
CWoodbridge@epsom-ewell.gov.uk
020 8393 2853

Ewell Court

Eber Kington:
ekington@epsom-ewell.gov.uk
020 8786 7484

Peter O'Donovan:
PO'Donovan@epsom-ewell.gov.uk
07931 130902

Guy Robbins:
GRobbins@epsom-ewell.gov.uk
01372 732000

Nonsuch

Christopher Frost:
CFrost@epsom-ewell.gov.uk
01372 720430

Christine Howells:
CHowells@epsom-ewell.gov.uk
020 8393 8555

Colin Keane:
CKeane@epsom-ewell.gov.uk
020 8393 7715

Ruxley

Alex Coley:
AColey@epsom-ewell.gov.uk
07421 450311

Jan Mason:
JMason@epsom-ewell.gov.uk
020 8397 7609

Alan Sursham:
ASursham@epsom-ewell.gov.uk
07784 716567

Stamford

Steve Bridger:
SBridger@epsom-ewell.gov.uk
07873 150268

Previn Sing Jagutpal:
PJagutpal@epsom-ewell.gov.uk
07476 294849

Bernie Muir:
BMuir@epsom-ewell.gov.uk
01372 801880

Stoneleigh

Hannah Dalton:
HDalton@epsom-ewell.gov.uk
07740 407050

David Reeve:
DReeve@epsom-ewell.gov.uk
07808 889653

Chris Webb:
CWebb@epsom-ewell.gov.uk
07585 220122

Town

Arthur Abdulin:
AAbdulin@epsom-ewell.gov.uk
07451 244158

Neil Dallen:
NDallen@epsom-ewell.gov.uk
01372 732793

Luke Giles:
LGiles@epsom-ewell.gov.uk
07984 147175

West Ewell

Monica Coleman:
MColeman@epsom-ewell.gov.uk
07538 819743

Barry Nash:
BNash@epsom-ewell.gov.uk
07836 555888

Clive Smitheram:
CSmitheram@epsom-ewell.gov.uk
020 8224 9226

BBC Surrey: 104.0 & 104.6 FM,
DAB, Freeview 722

Radio Jackie: 107.8 FM

Eagle Radio: 96.4 FM, DAB

Woodcote

Liz Frost:
LFrost@epsom-ewell.gov.uk
01372 720430

Bernice Froud:
BFroud@epsom-ewell.gov.uk
01372 811555

Steven McCormick:
SMcCormick@epsom-ewell.gov.uk
01372 739727

Council Meetings

Residents can attend meetings held in public at the Town Hall. Visit our website to view the full year calendar and for information on how to ask questions at meetings. Agenda papers are available to download five working days before the meeting. For more information contact Democratic Services at the Town Hall – we're always happy to help.

November 2019

Planning Committee
7 November, 7pm

Health Liaison Panel
12 November, 7pm

Licensing and Planning Policy Committee
14 November, 7pm

Shareholder Sub Committee
19 November, 2pm

Audit, Crime & Disorder and Scrutiny Committee
21 November; 7.30pm

Strategy and Resources Committee
26 November; 7.30pm

Contact the council

The best way to contact us is via the website:
www.epsom-ewell.gov.uk

Email:
contactus@epsom-ewell.gov.uk

Emergency telephone
(operates 24 hours):
01372 732000

Our address
Town Hall, The Parade, Epsom,
Surrey, KT18 5BY

County Councillors

Epsom Town & Downs
Tina Mountain - 01372 272499
tina.mountain@surreycc.gov.uk

Epsom West
Bernie Muir - 01372 801880
bernie.muir@surreycc.gov.uk

Ewell
John Beckett - 020 8393 8208
john.beckett@surreycc.gov.uk

Ewell Court, Auriol & Cuddington

Eber Kington - 020 8786 7484
ekington@epsom-ewell.gov.uk

West Ewell
Jan Mason - 020 8397 7609
jmason@epsom-ewell.gov.uk

Your MP

The Rt Hon Chris Grayling MP
Constituency office:
01372 271 036

Westminster office:

020 7219 8194
chris.grayling.mp@parliament.uk

Dear diary

November

Garden of Remembrance, throughout November, Bourne Hall Park, Ewell: The public are invited to place their own crosses and tokens of remembrance to honour and remember members of their own family, friends or others who have lost their lives in service to their country during any conflict.

Armistice Day, Monday 11 November, 11am, Epsom Market Place: Join the Mayor of Epsom and Ewell for a short service at the 11th hour of the 11th day of the 11th month in memory of those who gave their lives for their country. During this service, the national two-minute silence will be observed.

Christmas lights switch-on show, Saturday 23 November, The Ashley Centre, Epsom: www.theashleycentre.co.uk

Thursday 28 November, Go Christmas, 4pm onwards, Epsom Market Place: Christmas light's switch-on event in association with Epsom BID. Join in for festive fun and entertainment for all the family. Chosen charity for this event is the Epsom and Ewell Foodbank.

Friday 29 November, Lights on Broadway, 4pm-8pm, Stoneleigh Broadway: A Christmas family event organised by the Stoneleigh Broadway Traders. www.facebook.com/stoneleighbroadway

Countryside guided walks

Days of Steam, Sunday 17 November, 1pm-4pm, Horton Country Park: Discover the fascinating history of the Horton Light Railway with one of our countryside team on this walk in your local nature reserve. Meet at the Information Centre at 1pm.

December

Christmas Gift Market, Tuesday 10 - Saturday 14, 10am - 5pm (4pm Saturday), Bourne Hall, Ewell: Christmas shopping on your doorstep at this five day gift market.

Epsom cemetery service, Friday 20 December, 11am: An ecumenical service at Epsom cemetery chapel to remember loved ones who have passed away.

Free Christmas Sunday parking Sundays 8, 15 and 22 December

Parking is free in the Council shopper's car parks in central Epsom.

Bourne Hall Museum

KIDS CLUB ACTIVITIES:

The Romans are coming! Saturday 9 November 2019, 1pm-3pm.

A World War 2 Christmas, Saturday 14 December 2019, 1pm-2.30pm.

World War 2 rationing - food and clothes and make do and mend, Saturday 11 January 2020

Anglo Saxons, Saturday 8 February 2020

Epsom and Ewell Health walks cater for all abilities. Walks are free and there is no need to book. You can just turn up at your chosen venue and join in. For more information and to view the programme of walks visit: www.epsomandewellhealthwalks.org.uk/

Bourne Hall Museum kids club activities cost £5 per child, includes one accompanying adult. For further details and to book contact David Brooks, phone 020 8394 1734, email: dbrooks@epsom-ewell.gov.uk

Countryside guided walks cost £5 for adults and £2.50 for children (16 years or under). For further details and to book visit our website.



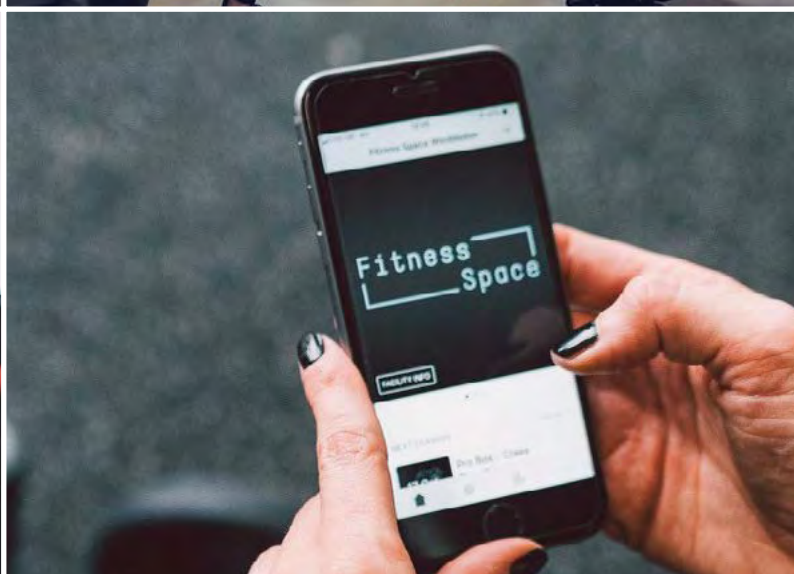
Lest we forget

**KEY
PRIORITY:**
Supporting our
community





Fitness
Space



Offer
Expires
30/11/19


JOIN FOR FREE

No joining fee when you join Fitness Space. SAVE £100!

Promo Code: BI2019 Register NOW: fitnessspace.com/epsom
epsom@fitnessspace.com or text 07537 150182 (text only)

1st Floor
10 Spread Eagle Walk
Epsom. KT19 8DN.
(access on 'The Parade')
+44 (0)1372 439 260
epsom@fitnessspace.com

 @fsepsom

 Fitness Space Epsom

MEMBER TESTIMONIAL



"Honestly, I didn't think I would enjoy the gym as much as I am, and I'm attending more than I thought I would.

I found it quite daunting to begin with, but there's a lot of people around that can help you if you get stuck or if you need ideas.

When I first did circuits I hated it but actually I really feel a benefit from it, so circuits is my favourite class. I'm attending so that's big progress! "

"Do it, just do it! If I can do it, you can do it!"

Stay Covered

Our Premier Gas maintenance package provides total peace of mind for just **51p** per day



Premier Gas Packages

The **Total Solution** for all of your Gas Servicing, Repair and Maintenance needs

Included in Premier Gas:

- Annual Boiler Service
- Parts & Labour
- Unlimited Callouts
- No Excess
- Emergency Service 24/7

10%

off all packages
quote **SAVE10***

020 8722 3439

ths@smithandbyford.com

www.smithandbyford.com

36 The Broadway, Cheam Village, SM3 8BD

* T&C apply, 10% off until 31st January 2020