



WARD PROFILE

WOODCOTE



Queens Stand, Epsom Racecourse

February 2005



Contents

Notes and Definitions	3
Summary of Woodcote Ward	4
1. Introduction	5
2. Population	6
2.1 Population Density.....	6
2.2 Age Profile	6
2.3 Ethnicity.....	8
2.4 Country of Origin	9
2.5 Religion	9
2.6 Health and Provision of Care.....	10
2.7 Disability Living Allowance Claimants.....	10
3. Household Information	11
3.1 Number of Households.....	11
3.2 Household Composition	11
3.3 Housing Tenure	11
3.4 Accommodation Type.....	12
3.5 Average Number of Rooms per Household.....	12
3.6 Communal Establishments.....	12
4. Employment and Socio-Economic Groups	13
4.1 Economic Activity	13
4.2 Occupation	13
4.3 Industry.....	14
4.4 Level of Qualifications for Working Age Population	15
4.5 Share of District Employment	15
4.6 Socio-Economic Classification	16
5. Social Deprivation	17
5.1 Definition of Super Output Areas by Road.....	18
6. Transport	19
6.1 Car Availability.....	19
6.2 Proportion of Households with 2+ Cars	19
6.3 Travel to Work	20
7. Crime	20

Notes and Definitions

Ward profiles have been compiled using information from the 2001 Census of Population and other sources for example, Local Knowledge website, Housing Needs Survey 2004 and the Crime Audit 2004.

A household comprises one person living alone, or a group of people (not necessarily related) living at the same address with common housekeeping – that is, sharing either a living room or a sitting room or at least one meal a day.

All people who were working in the week before the Census or were looking for work and were available to start work within 2 weeks are described as economically active. Full time students who are economically active are included but are identified separately in the classification. The economic activity questions are only asked of people aged 16 to 74. The proportion given is the percentage of the population aged 16-74.

The National Statistics Socio-economic Classification (NS-SEC) provides an indication of socio-economic position based on occupation. It is an Office for National Statistics standard classification. Not classifiable for other reasons includes people who have not been coded and those who cannot be allocated to an NS-SEC category.

A dependent child is a person aged 0 to 15 in a household (whether or not in a family) or aged 16 to 18 in full-time education and living in a family with his or her parent(s).

An overcrowded household has an occupancy rating of –1 or less. The Occupancy rating provides a measure of under occupancy and over crowding. It relates the actual number of rooms to the number of rooms ‘required’ by the members of the household (based on a relationship between them and their ages). A rating of –1 means that the household has one too few rooms.

Households lacking amenities are those without central heating and/or without sole use of bath/shower and toilet.

The DETR Index of Multiple Deprivation 2004 calculates values for the relative level of need, derived from 6 main indices. Higher values indicate greater need. The UK average is 21.67. The 7 domain indices are: income, employment, health deprivation and disability, education skills and training, barriers to housing and services, living environment and crime.

NB. Figures may not add up to 100% due to rounding.

Where data has not been sourced it is from the 2001 Census. Data not from the Census is sourced separately underneath the corresponding data.

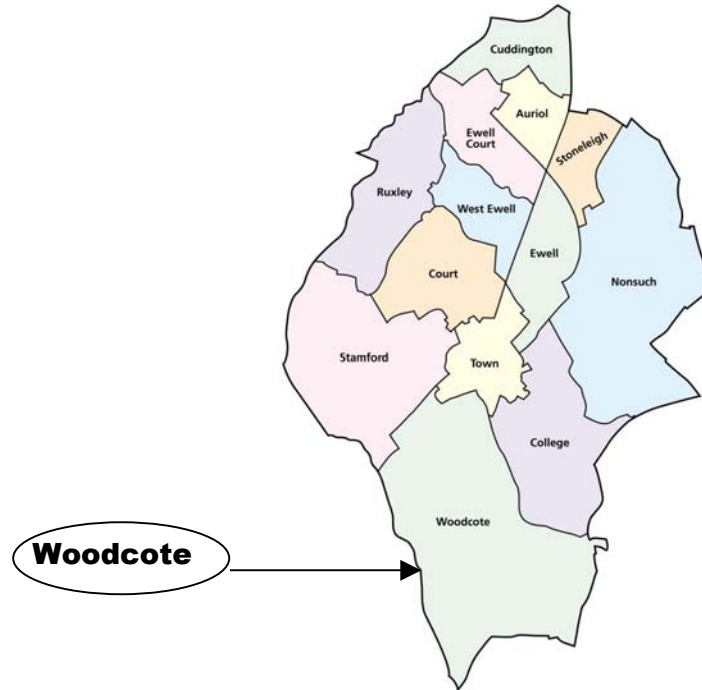
If you have any comments or queries on any aspect of the profile, please contact Sara Childs or Kate Cheminais in the Service Improvement Unit on 01372 732000.

Summary of Woodcote Ward

Location of ward in the Borough	South
Population	5337
Population density	7.6 people per hectare
Size of Ward in Hectares	703
Age profile	Greatest age group proportion 45-64 (27%)
Ethnicity	5.9% ethnic minorities
DLA claimants	17.48 people per 1000 16+ population
Long-term Limiting Illness	12.7% of population
No of households	2172
Average number of people per household	2.5
Tenure	80.8% owner occupier
Accommodation type	52.4% detached
Economically active	71.3%
Occupation	22% managers and senior officials
Industry	21.7% real estate, renting and defence
Share of district employment	7.92%
Level of degree+ qualification	35.76%
Social deprivation DETR Index 2004	5.44
Car availability	1.45 cars per household
Proportion of 2+ car households	45.26%
Travel to work	52.2% car or van
Proportion of Crime	8% of all crime committed in the Borough

1. Introduction

Woodcote ward lies in the South of Epsom & Ewell and is the largest ward in the Borough in terms of its size. It borders Reigate & Banstead and Mole Valley to the South and Stamford, Town and College wards to the North.



The outstanding feature of Woodcote ward is the Downs and the famous racecourse. The Downs are an area of 600 acres of unspoilt downland. From here, on a clear day, the view takes in the whole of London, as well as panoramas of rural Surrey.

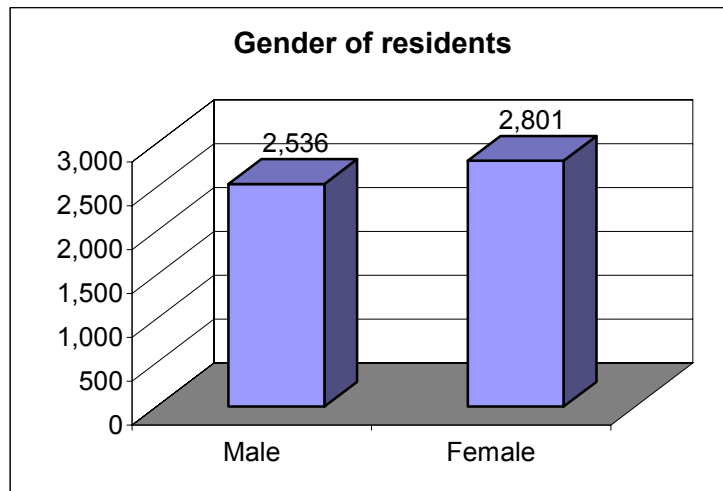
There has been horse racing on the Downs for over 500 years. In the 1580's Queen Elizabeth I went horse riding several times in the area, while she stayed at the nearby Nonsuch Palace. In the nineteenth century, the racecourse became important to Epsom's economy, bringing people and investments back to the town after the decline of the spa. The most famous races at Epsom are the Oaks and the Derby, which take place on the first Friday and Saturday in June. The first Oaks was run in 1779, and the first Derby 1780. During the Derby in 1913, the suffragette Emily Davison threw herself under the Kings horse, and subsequently died from her injuries.

The ward takes its name from Woodcote Park, a manor house constructed in the 17th century. The park is now owned by the Royal Automobile Club, which has its country club there. During the First World War, it spent time as a convalescent camp.

Woodcote is one of the most affluent wards in Epsom & Ewell. As the Borough was built up in the 1890's, many large houses were built on the edge of the Downs. Langley Vale (previously known as Langley Bottom) developed before and between the two World Wars, mostly by individuals buying plots of land and having houses built. But it was after the Second World War that the main development occurred. This led to a mixture of houses, detached, semi-detached and bungalows, in a wide variety of designs.

2. Population

Woodcote ward has a population of 5,337 people, an increase of 9.3% from 1991. Females slightly out-number males (a trend seen both Borough and county wide), with 2,801 females compared to 2,536 males.

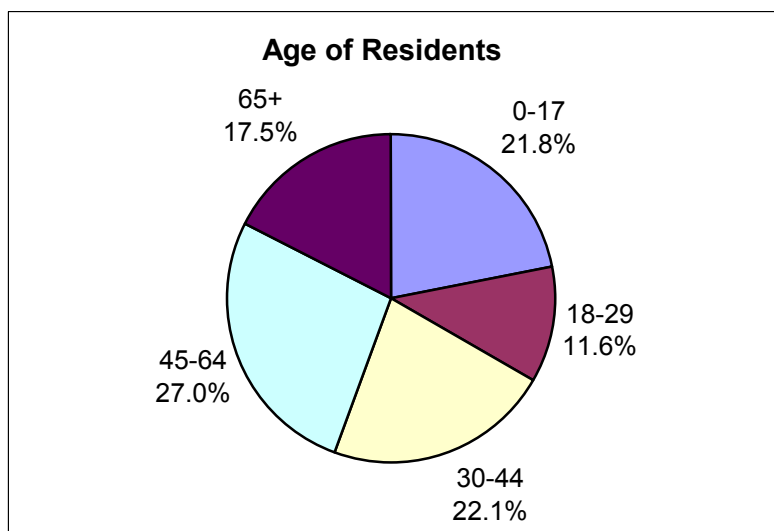


Please note that the 2001 Census data is the most current population data at ward level.

2.1 Population Density

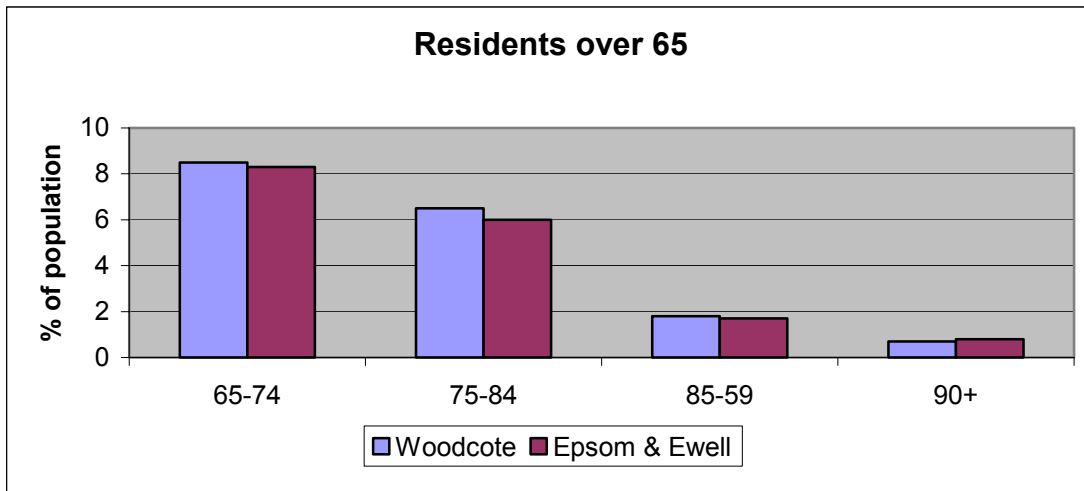
Woodcote ward covers an area of 703 hectares and has a population density of 7.6 people per hectare. This makes it the least densely populated ward in the Borough.

2.2 Age Profile

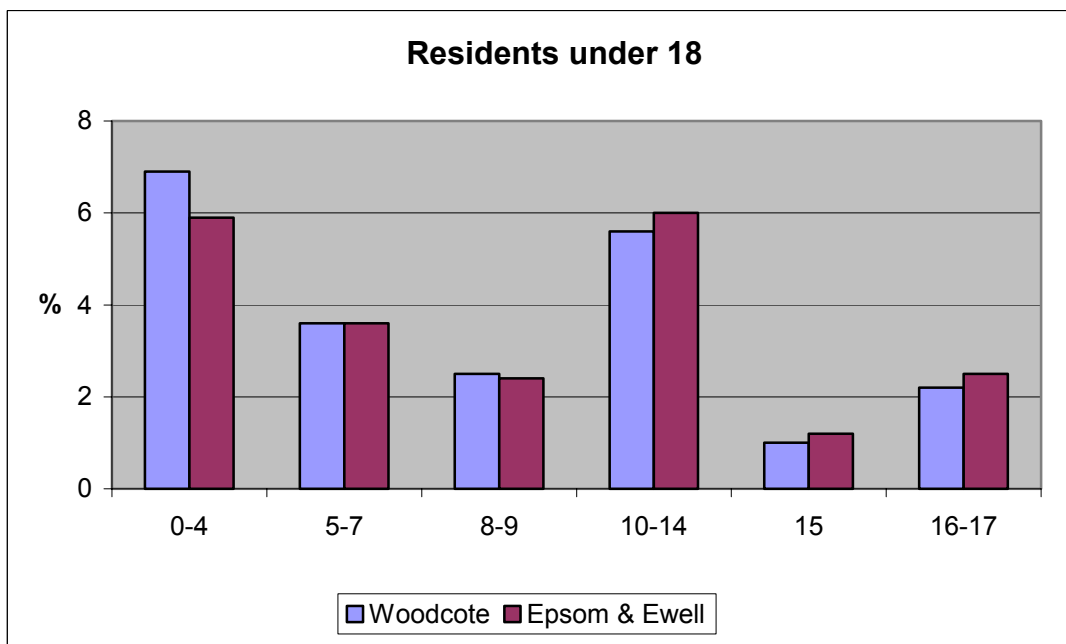


The population of Woodcote ward is slightly older compared to the average in Epsom & Ewell. People over 65 make up 17.5% of the population, compared to 16.8% in the Borough as a whole.

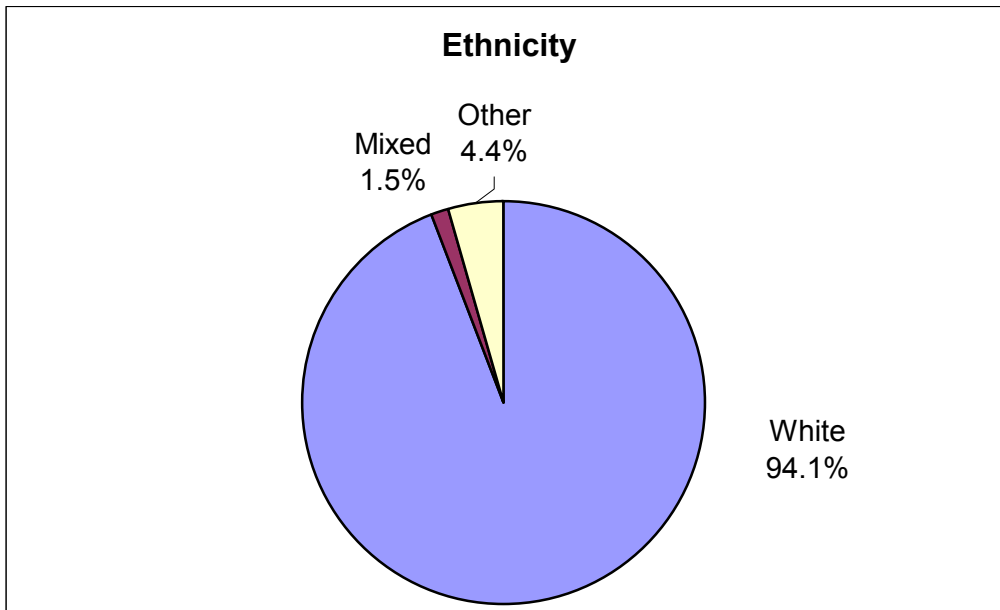
Woodcote ward has more residents aged between 65 and 89 compared to the Borough average, but fewer residents over the age of 90.



Woodcote ward has a slightly higher proportion of residents aged under 18 compared to the Borough average. A fairly high proportion of the population is made up of pre-school children (6.9%), with 19.6% of residents under the age of 16.

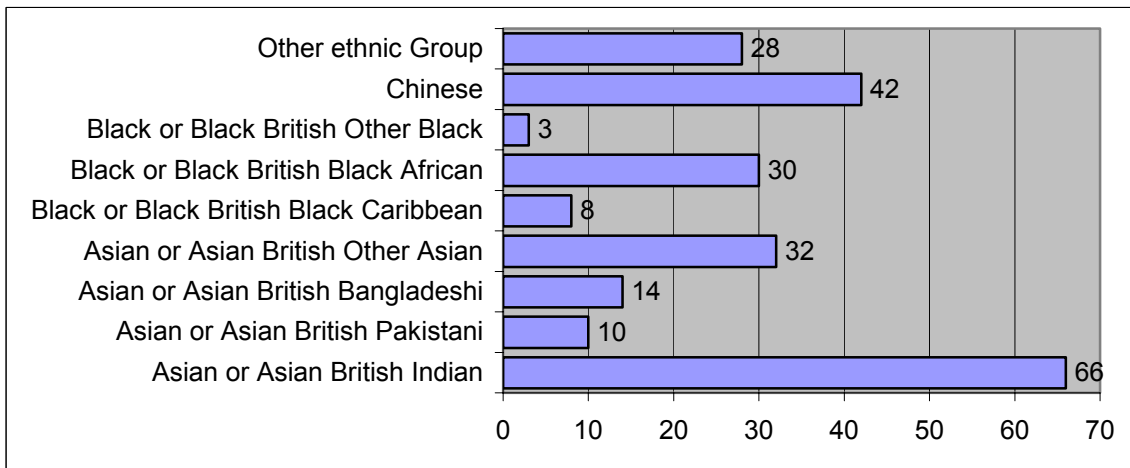


2.3 Ethnicity



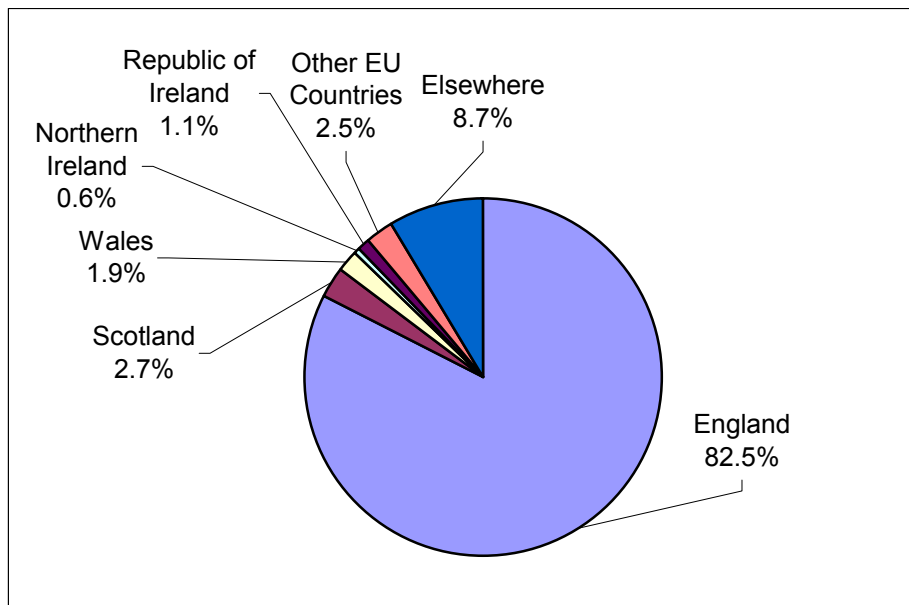
5.7% of the population of the ward do not class themselves as white, which includes 1.2% who are of a mixed race background. This is the second lowest proportion of minority groups in the Borough where 8.7% of residents (including 1.8% mixed race) do not class themselves as white.

The table below shows the breakdown of residents by ethnic origin in terms of absolute numbers.



The largest ethnic minority is Asian or Asian British Indian, with 1.2% of the total population.

2.4 Country of Origin



The majority of residents (82.5%) were born in England. 8.7% were born outside of the European Union. Woodcote has the highest proportion of Scottish residents in the Borough (2.7%, the average is 1.7%).

2.5 Religion

Religion	Woodcote	Epsom & Ewell
Christian	74.3%	73%
Buddhist	0.2%	0.5%
Hindu	1.0%	1.8%
Jewish	0.6%	0.4%
Muslim	1.3%	1.9%
Sikh	0.1%	0.1%
Other religions	0.4%	0.3%
No religion	14.8%	14.8%
Religion not stated	7.2%	7.2%

There are a slightly higher percentage of Christians in Woodcote than Epsom & Ewell as a whole. Woodcote has the second highest proportion of Jews in the Borough.

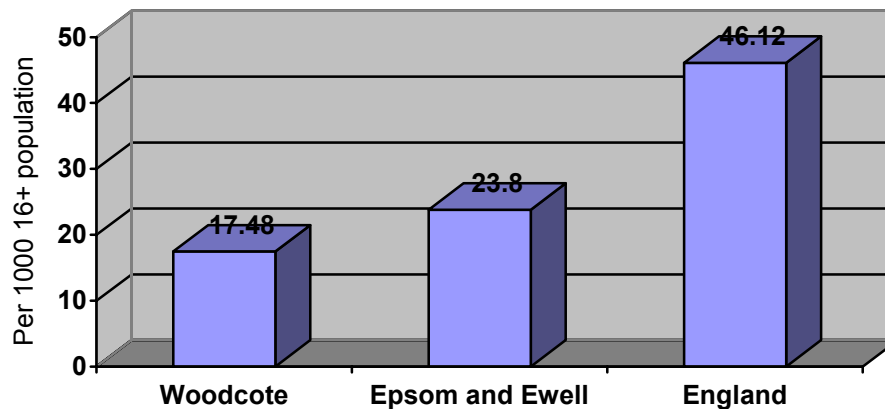
2.6 Health and Provision of Care

12.7% of Woodcote residents have a limiting long-term illness. This compares with 14.3% in the whole Borough. There are more people judging their health as good in Woodcote compared to the Borough (76.6% compared to 73.8%), and the proportion in good health here is more than in England as a whole (68.8%).

	Woodcote	Epsom & Ewell
All people who provide unpaid care	10.1%	9.8%
All people who provide unpaid care: 1-19 hours a week	7.5%	7.6%
All people who provide unpaid care: 20-49 hours a week	1.0%	0.9%
All people who provide unpaid care: 50+ hours a week	1.6%	1.4%

10.1% of Woodcote residents (539 individuals) provide unpaid care, with a 85 individuals (1.6%). providing it for over 50 hours a week

2.7 Disability Living Allowance Claimants



Woodcote ward has a lower proportion of Disability Living Allowance claimants than the Borough and national averages.

Source: Local Knowledge Website, December 2004

3. Household Information

3.1 Number of Households

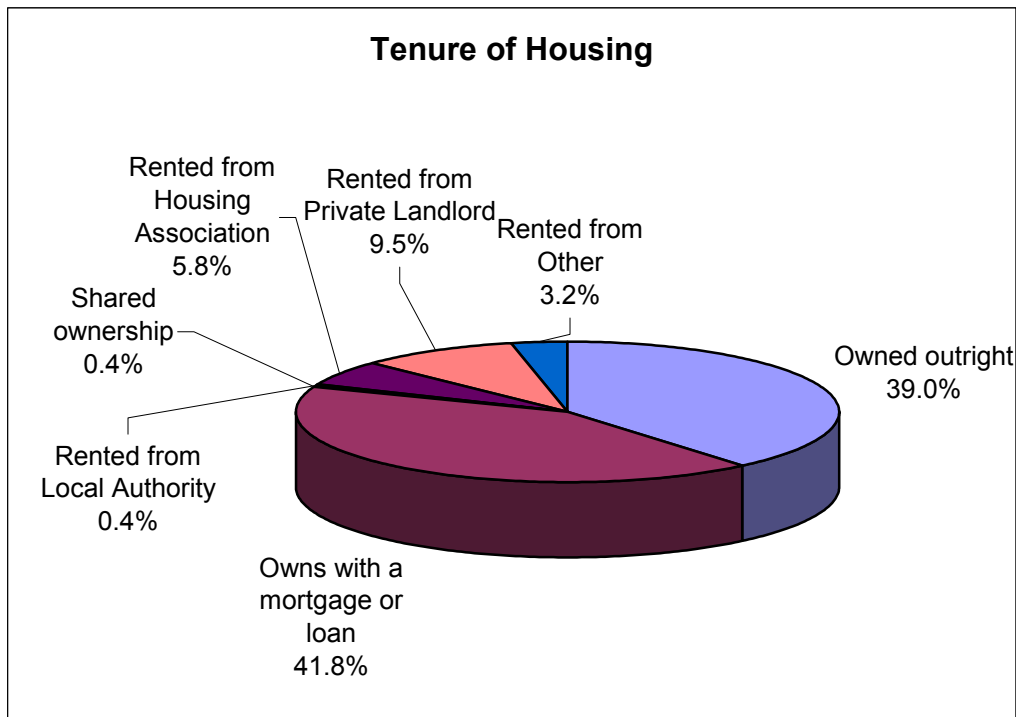
There are 2,172 households in Woodcote ward, with an average of 2.5 people per household (this is the same as the Borough average).

3.2 Household Composition

Households Comprising	Woodcote	Epsom & Ewell
One person: Pensioner	15.2%	14.9%
One person: Other	9.8%	12.0%
Households with pensioners only	27.4%	25.5%
Lone parents with dependent children	4.0%	4.6%
Households with dependent children	30.2%	29.6%

Compared to the rest of the Borough, there are fewer one-person households (25% compared to 26.9%). However, there are a higher proportion of households with pensioners only.

3.3 Housing Tenure



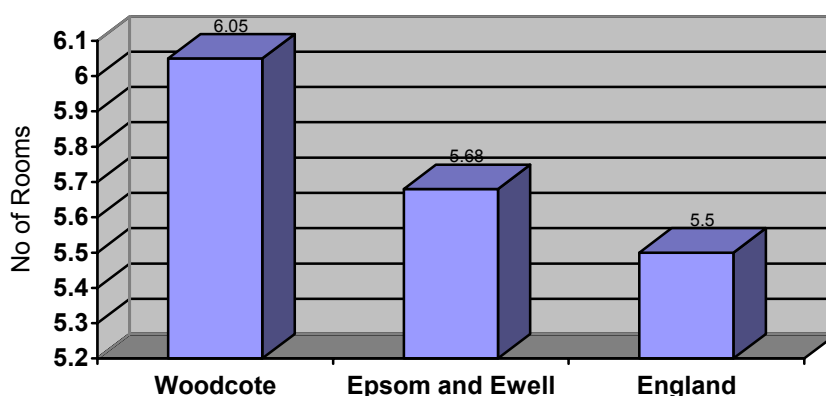
80.8% of properties in Woodcote are occupied by their owner, a little lower than the Borough average of 82.3%.

3.4 Accommodation Type

Accommodation Type	Woodcote
Detached	52.4%
Semi-detached	22.6%
Terraced	10.2%
Purpose built flats or tenement	13.8%
Part of converted house (including bed-sits)	3.7%
In commercial building	0.7%
Caravan or other mobile or temporary structure	0.0%

Woodcote ward has a particularly high proportion of housing that are detached. 3.2% of properties in the ward are vacant.

3.5 Average Number of Rooms per Household



Woodcote ward has a higher average number of rooms than the Borough and national figures.

Source: Housing Needs Survey, 2004

3.6 Communal Establishments

Communal establishments include hospitals, retirement homes, other medical and care establishments (for example nursing homes or hospices), hostels and prisons.

There are five communal establishments (NHS and other residential care homes) in Woodcote, with a total of 51 residents. 22 of these residents living in medical and care establishments have a limiting long-term illness.

4. Employment and Socio-Economic Groups

4.1 Economic Activity

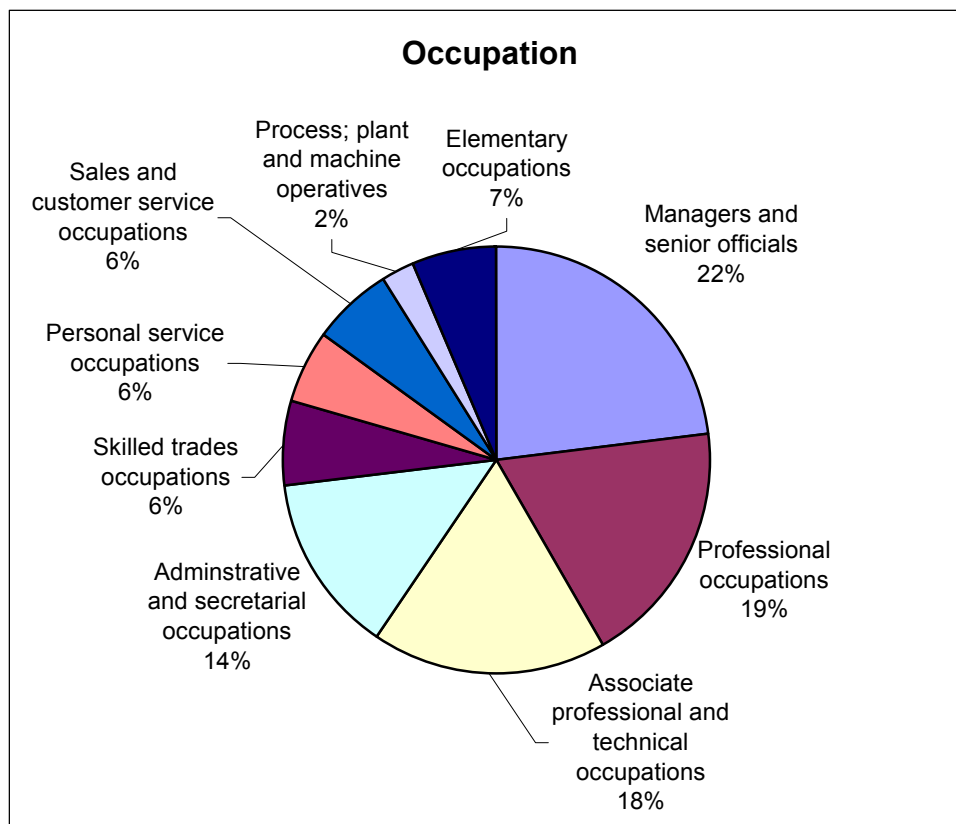
	Woodcote	Epsom & Ewell
Economically active: Part Time	12.0%	11.7%
Economically active: Full time	43.9%	43.9%
Self Employed	10.6%	10.3%
Unemployed	2.0%	1.8%
Retired	14.5%	14.1%

The above table does not add up to 100% as it contains only the information thought to be significant.

71.3% of the ward's residents are economically active. This is slightly higher than the Borough as a whole, where 70.5% of people are active. Unemployment is slightly higher than the average.

4.2 Occupation

There are 2,630 people in employment in Woodcote ward. The table below shows the areas in which they work.



The highest proportions of people in Woodcote work as managers and senior officials (23.0%) and in professional occupations (18.7%). The number of managers and

senior officials is fairly high compared to Epsom & Ewell as a whole (19.5%), though Woodcote has the lowest proportion of people working in skilled trades (6.3% in Woodcote, 8.9% in Epsom & Ewell as a whole).

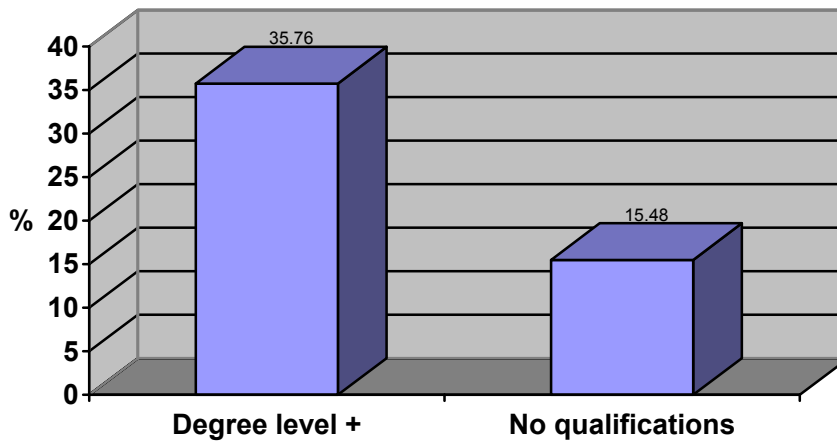
4.3 Industry

	Woodcote	Epsom & Ewell
Agriculture, hunting, forestry	1.0%	0.7%
Mining & Quarrying	0.5%	0.4%
Manufacturing	7.0%	7.2%
Electricity, gas and water supply	0.6%	0.5%
Construction	5.1%	6.6%
Wholesale & retail trade; repair of motor vehicles	12.1% (3)	14.9% (2)
Hotels and catering	3.6%	3.4%
Transport, storage and communication	5.3%	7.1%
Financial intermediation	9.3% (4)	8.1% (4)
Real estate; renting and business activities	21.7% (1)	18.9% (1)
Public administration and defence	6.4%	6.7%
Education	8.1% (5)	7.9% (5)
Health and Social Work	12.7% (2)	11.5% (3)
Other	6.5%	6.3%

Numbers in brackets show the top five areas of work.

The highest proportion of people living in Woodcote work in real estate, renting and business activities. Woodcote has the second highest proportion of residents working in this area compared to the other wards in the Borough. 26 individuals work in agriculture, hunting or forestry.

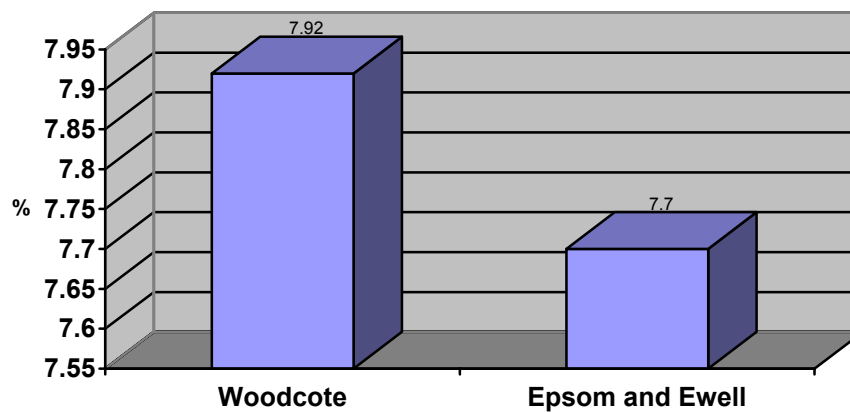
4.4 Level of Qualifications for Working Age Population



Woodcote ward has a significantly higher proportion of people educated to degree level + than those without. Woodcote has the second highest rate of people educated to degree + in the Borough.

Source: Local Knowledge Website, December 2004

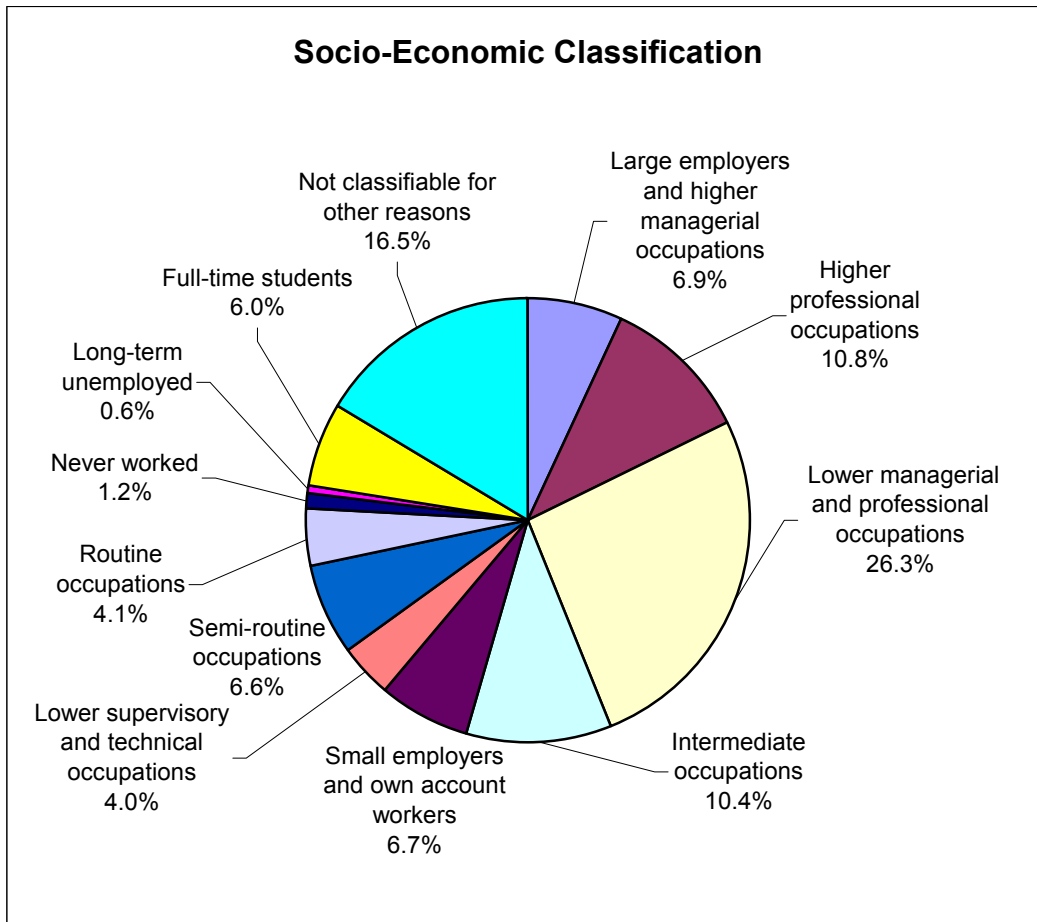
4.5 Share of District Employment



Woodcote ward has a higher share of district employment than the average for the Borough.

Source: Local Knowledge Website, December 2004

4.6 Socio-Economic Classification



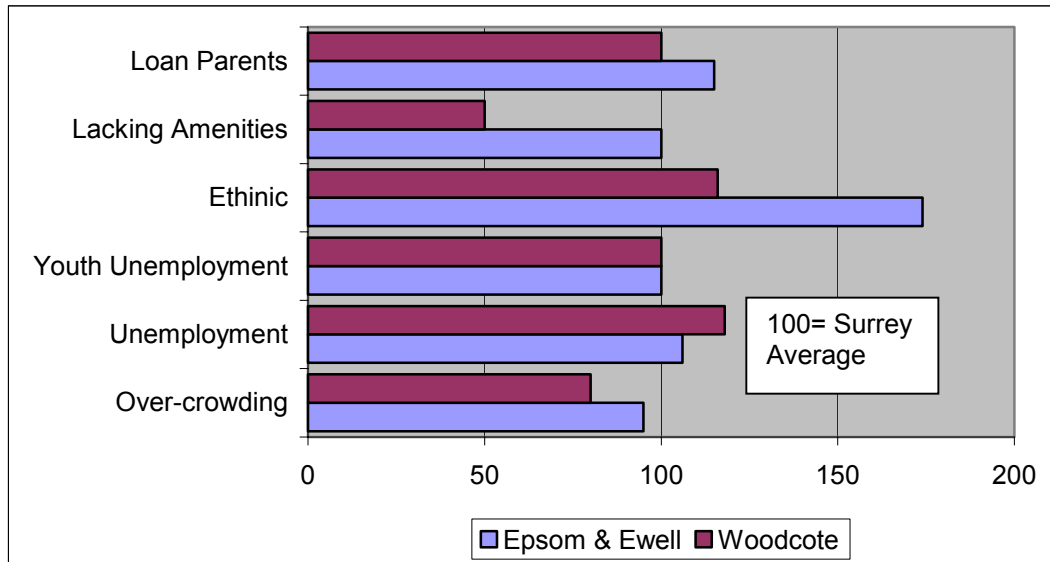
The table above shows the National Statistics Socio-Economic Classification for the 3,812 people aged 16-74 living in Woodcote.

Woodcote has the second highest proportion of people in higher managerial and higher professional occupation in the Borough.

Woodcote has the highest proportion of long term unemployed in the Borough (0.6%), but is below the Borough average for people who have never worked.

5. Social Deprivation

The table below shows indicators for social deprivation for both Woodcote ward and Epsom & Ewell as a whole, as compared to the Surrey average.



Woodcote ward does not have a high level of social deprivation compared to Surrey as a whole, being very near the County averages for all indicators (except for properties lacking amenities, which is half the level).

Woodcote ward's score on the DETR index of deprivation is 5.44, lower than the Borough average (6.83). Using this index, Woodcote is rated as the 8th most deprived ward in the Borough, though it is in the top half of all wards in Surrey (127/207).

Woodcote ward is split up into four Super Output Areas.

Super Output Area	Rank in Borough (out of 44, 1= most deprived)
Woodcote 1	28
Woodcote 2	34
Woodcote 3	37
Woodcote 4	7

Woodcote 4 is considerably more deprived than Woodcote 3. This large range is quite unusual in the Borough.

Source: ODPM

5.1 Definition of Super Output Areas by Road

Woodcote 1

Axwood, Baron's Hurst, Berkeley Place, Cedar Hill, Chalk Lane, Chalk Paddock, Chantry Hurst, Hambledon Hill, Hambledon Vale, Langley Vale Road, Loop Road, Oak Hill, Old Barn Road, Pine Hill, Sunny Bank, Tattenham Corner Road, Warren Hill, Wilmerhatch Lane, Woodcote End, Woodcote Green Road, Woodcote Hurst.

Woodcote 2

Beaconsfield Road, Chalk Pit Road, Grosvenor Road, Harding Road, Headley Road, Langley Close, Langley Vale Road, Mannamead, Mannamead Close, Millers Copse, Roseberry Road, Saddlers Way, Spencer Close, Stable Close, Strand Close, The Hayes, The Ridge.

Woodcote 3

Ashley Road, Avenue Road, Caithness Drive, Chalk Lane, Dorking Road, Dudley Grove, Elm Grove, Elmslie Close, Jackson Close, Leighton Way, Madeira Walk, Orchard Gardens, South Street, Squirrel's Way, St Elizabeth Drive, St Margarets Drive, St Theresa Close, White Horse Drive, Woodcote Close, Woodcote Green Road, Woodcote Road, Worple Road, Woodcote4 , Bucknills Close, Castle Road, Dorking Road, Ebba's Way, Ebbisham Road, Hylands Road, Mynn's Close, Oakmead Green, Ruthen Close, Westlands Court, Whitmores Close, Woodcote Side, Yew Tree Gardens.

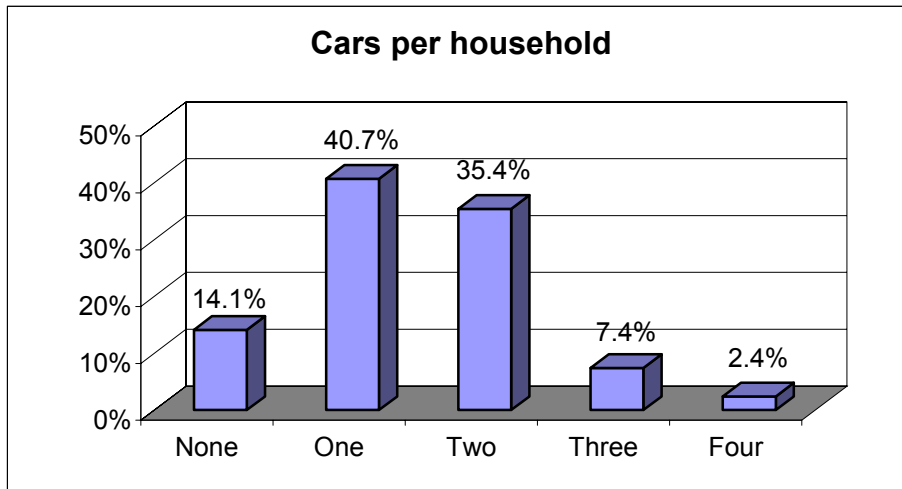
Woodcote 4

Bucknills Close, Castle Road, Dorking Road, Ebba's Way, Ebbisham Road, Hylands Road, Mynn's Close, Oakmead Green, Ruthen Close, Westlands Court, Whitmores Close, Woodcote Side, Yew Tree Gardens.

Source: ODPM

6. Transport

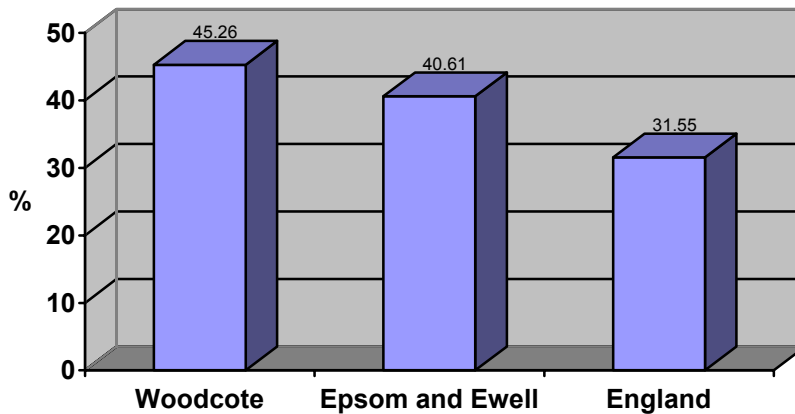
6.1 Car Availability



There is an average of 1.45 cars per household in Woodcote, slightly higher than the Borough average of 1.37. There are fewer households with no vehicle than the Borough as a whole (14.1% Woodcote compared to 15.3% in Epsom & Ewell).

Source: Local Knowledge Website, December 2004

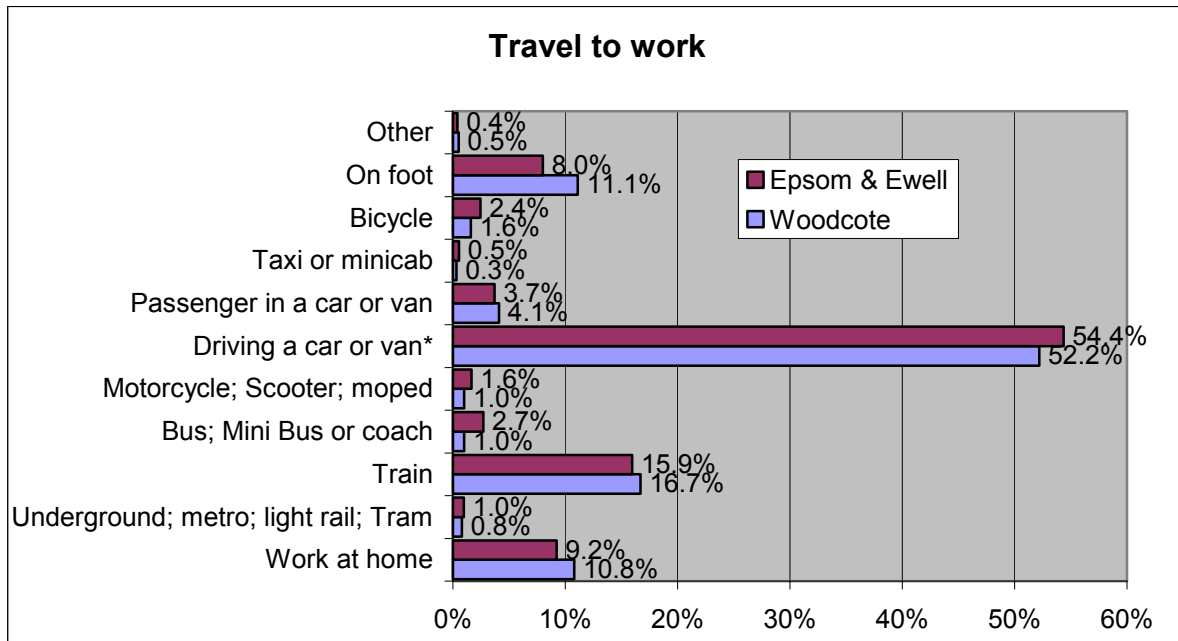
6.2 Proportion of Households with 2+ Cars



Woodcote ward has a higher proportion of households with 2+ cars than the Borough and national averages.

Source: Local Knowledge Website, December 2004

6.3 Travel to Work



Driving to work is the most popular option for the residents of Woodcote ward, with 52.2% of people using this option. This is lower than the Borough average of 54.4. A higher proportion of the residents of Woodcote walk to work compared to the Borough average.

Source: Local Knowledge Website, December 2004

7. Crime

8% of all crime in the Borough occurs in Woodcote ward. Woodcote ward is one of the hotspots for burglary in the Borough. This crime type is however on the decrease and therefore is defined as a non-priority area.

Source: Crime Audit, 2004