

## Carer's room allowance

Housing Benefit is calculated with regard to appropriately sized accommodation. However, previously no allowance could be made for a non-resident carer.

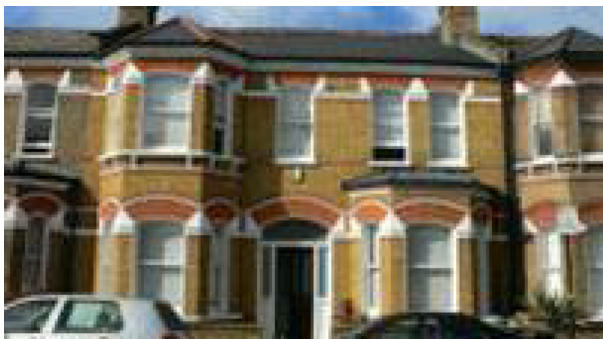
Now, if you are disabled and have a carer who does not live with you but is required to regularly stay overnight, we may be able to increase your benefit in respect of the additional bedroom you need for them.

If you think this might apply to you please contact the Benefits Section on 01372 732269 immediately.

## Changes in circumstance

The amount of benefit you receive still depends on things such as your income and capital.

**Therefore you must ensure you advise us of any changes immediately. Any delay may cause overpayments and a loss of benefit.**



This leaflet is a guide only and does not state your legal rights. ALWAYS check with the Benefits Section for up to date information

## Where to get more information

Visit the Benefits Section at the Town Hall  
9am to 4.30pm, Monday to Friday or call us on  
01372 732269.

Directgov  
[www.direct.gov.uk](http://www.direct.gov.uk)

Department for Work and Pensions  
[www.dwp.gov.uk](http://www.dwp.gov.uk)

Valuation Office Agency  
[www.voa.gov.uk](http://www.voa.gov.uk)

Local Citizens Advice Bureau  
[www.epsomewellcab.org.uk](http://www.epsomewellcab.org.uk)

Money Advice Service  
[www.moneyadviceservice.org.uk](http://www.moneyadviceservice.org.uk)

If you would like a copy of this document in large print, on tape or in Braille, please contact 01372 732000.

If you require a translation in your language, please contact:

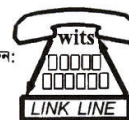
ନିକଟ ବ୍ରହ୍ମାଣ୍ଡ ଅଧିକାରୀ ସଂଗଠନ 'ସ' ଅନୁଷ୍ଠାନ ବାବୁଜୀ ଶ୍ରୀ, ଡା' ହିନ୍ଦୀ ବରଦେ ଚାନ୍ଦ୍ରା ବରଦେ:

જો તમને યોનાની ભાષામાં ભાષાંતર જોઈએ છે, તો મહેરબાની કરીને સંપર્ક સાધો:

Se necessitar de uma tradução, contacte por favor:

यदि आपनार निजेर भाषाय अनुवाद चान ताहसे अनुग्रह करे योगायोग करनन:

اگر آپ کو ترجمہ اپنی زبان میں چاہئے تو براہ کرم رابطہ کریں۔



Epsom & Ewell Borough Council  
Town Hall, The Parade  
Epsom, Surrey KT18 5BY  
Tel: 01372 732000

Email: [contactus@epsom-ewell.gov.uk](mailto:contactus@epsom-ewell.gov.uk)  
Web: [www.epsom-ewell.gov.uk](http://www.epsom-ewell.gov.uk)

# Housing Benefit Changes

Published August 2011

**Reduced benefit rates for single people under 35 years of age**

01372 732000

[contactus@epsom-ewell.gov.uk](mailto:contactus@epsom-ewell.gov.uk)

[www.epsom-ewell.gov.uk](http://www.epsom-ewell.gov.uk)

## Who is affected?

This change affects people who:

- Rent from a private landlord (*for example not a Housing Association*)
- Are under 35 years of age
- Are single (*do not have a partner*)
- Do not have a dependent child living with them
- Do not have someone else living with them as part of their household
- Do not live in certain types of supported accommodation
- Are not under 22 years of age and previously in Social Services care
- Do not have a non-resident carer who stays overnight (*see page 5*)
- Do not receive a severe disability premium (*for example when Disability Living Allowance is in payment*)
- Are not subject to assistance under Multi Agency Public Protection Arrangements
- Are not between 25 and 35 and are being assisted by support services to be resettled having spent three months or more in hostel accommodation.

## What has changed?

Most single people under 25 have had their Housing Benefit calculated from a Single Room Rent or Shared Accommodation Rate.

From January 2012 the Shared Accommodation Rate is extended to single people under 35.

The Shared Accommodation Rate is based upon rent levels for a single room in accommodation that is not self-contained. *For example, this may be within a house where a person has sole use of their bedroom and shares the use of the kitchen, bathroom and lounge.*

Your Housing Benefit will be calculated from this rate even if you live in other types of accommodation.

Therefore, the maximum you can receive in Housing Benefit will be the Shared Accommodation Rate. However, your income and savings may mean that you receive less than this amount.

### The Shared Accommodation Rate

The current rate can be found on the Council's website at [www.epsom-ewell.gov.uk](http://www.epsom-ewell.gov.uk)

At the time of producing this leaflet the rates were:

- £75.04 per week for most of the Borough
- £78.50 per week for the northern edge of the Borough.

You can find out which rate would apply to your accommodation on our website.

## When does the change happen?

If you make a new claim on or after 1 January 2012 this change will affect you immediately.

If you are an existing customer and have a break in your claim on or after 1 January 2012 the change will affect you from the start of your new award.

If you are an existing customer and move address on or after 1 January 2012 the change will affect you when you move.

If you are an existing customer and none of the above apply, and your claim is based upon Local Housing Allowance rates, this change will affect you:

- From the end of your 'Transitional Protection' period if you claimed Housing Benefit before April 2011, or
- On the anniversary of your claim, if you claimed after March 2011 but before January 2012.

*(Your Housing Benefit notifications will have stated Local Housing Allowance if your benefit is calculated under this scheme. Please contact the Benefits Section if you are unsure when your Transitional Protection will end.)*

If you are an existing customer and do not move nor have a break in your claim, and your claim is based upon a Rent Officer Referral, this change will affect you on the anniversary of the Rent Officer Referral.

Please contact the Benefits Section if you are unsure when this is.