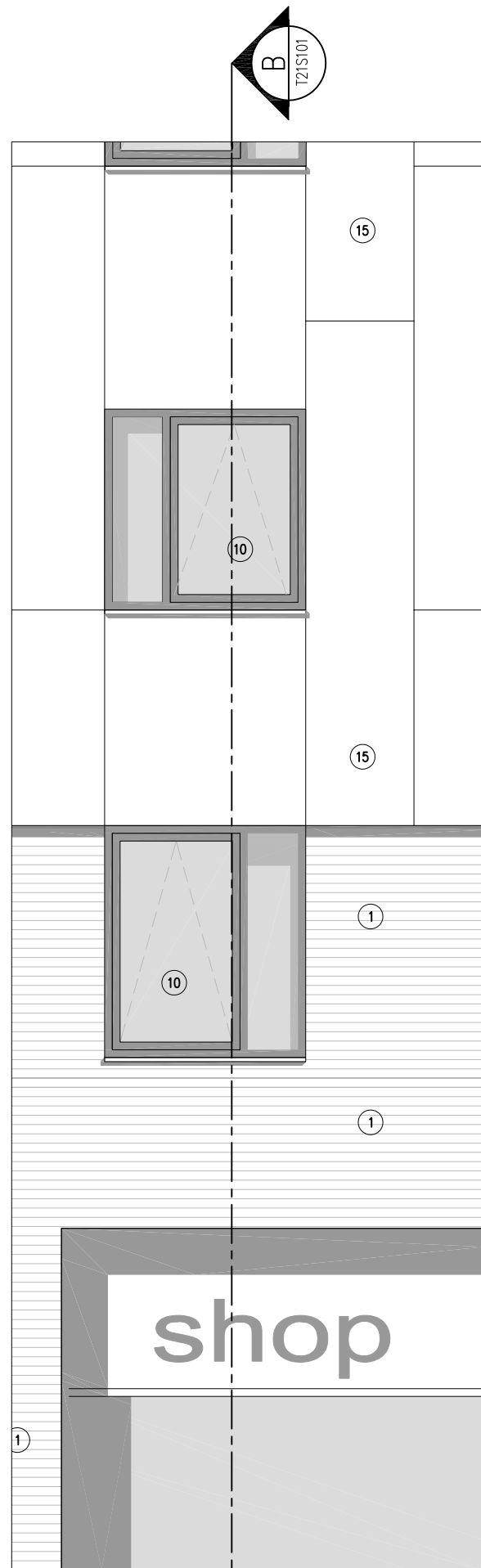
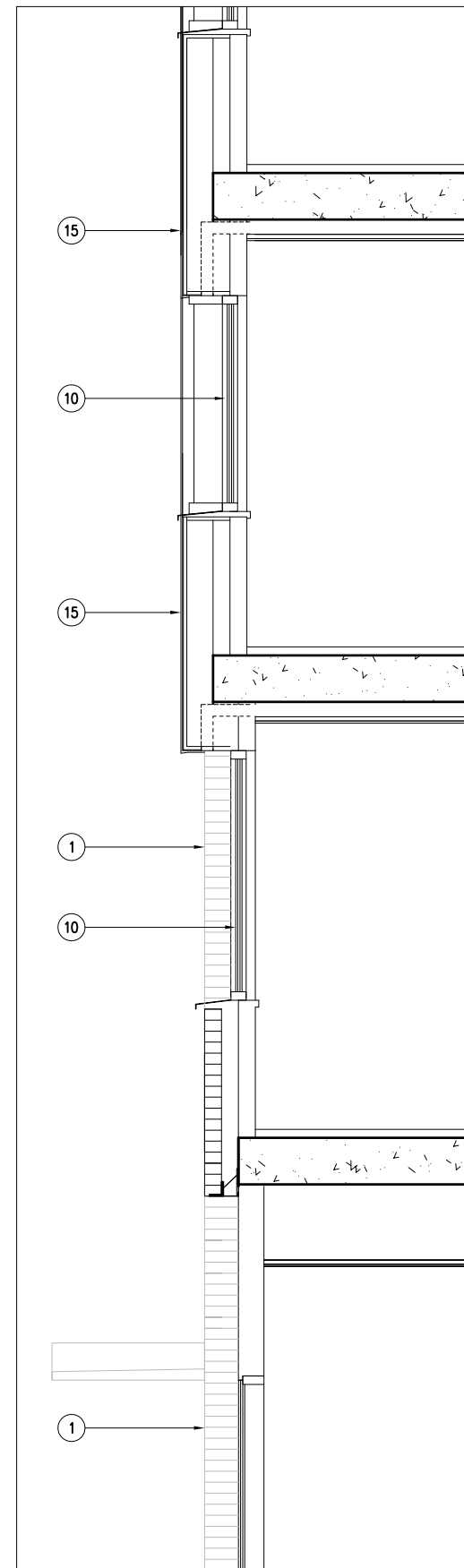
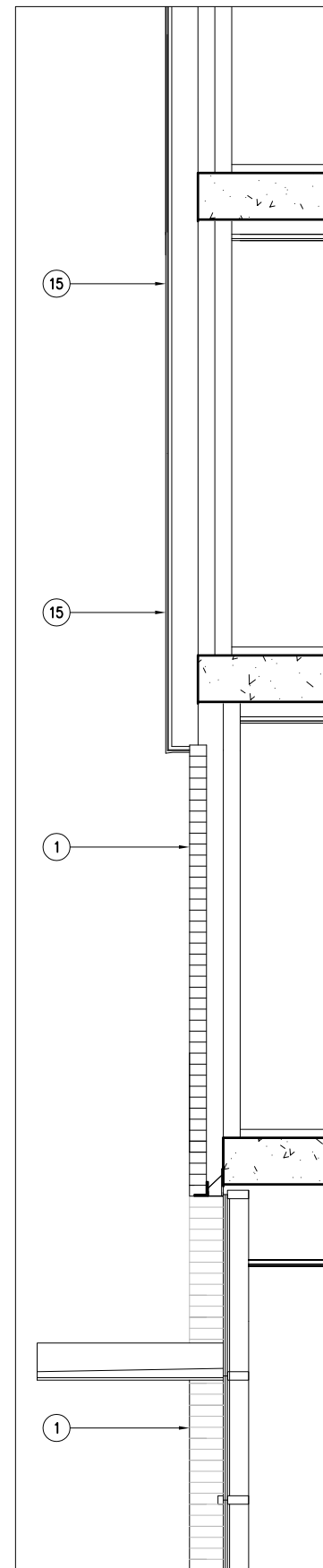


1 NORTH ELEVATION EXTRACTS OF HOTEL
SCALE: 1:20 (A1)



A SECTION A-A
SCALE: 1:20 (A1)



B SECTION B-B
SCALE: 1:20 (A1)

- NOTES**
- 1 The Contractor must check and confirm dimensions
 - 2 All discrepancies must be reported and resolved by the Architect before works commence
 - 3 This drawing is not to be scaled
 - 4 All work and materials to be in accordance with current applicable Statutory Legislation and to comply with all relevant Codes of Practice and British Standards.

- MATERIALS KEY LEGEND:**
1. BRICKWORK
 2. METAL RECESSED WINDOWS WITH BRICKWORK REVEALS
 3. SLIDING WINDOWS
 4. METAL BALCONIES WITH STAINLESS STEEL HANDRAIL, GLASS BALUSTRADE WITH LOW LEVEL FRIT AND METAL SOFFIT PANELS.
 5. TILED WALL
 6. CAR PARK VENTILATION INCORPORATING ARTWORK
 7. WINDOWS WITH METAL PANELS.
 8. PROJECTING WINDOWS
 9. CANOPY.
 10. METAL WINDOWS WITH STAGGERED GLAZING, TO HOTEL.
 11. FEATURE WALL OVER STATION ENTRANCE FORMED FROM COLOURED GLASS AND GLAZED INSULATED SHADOW BOX PANELS.
 12. SIXTH FLOOR WINDOW AND METAL PANEL SYSTEM.
 13. RENDER WALL
 14. GLASS CHANNEL STAIR CORE
 15. METAL PANEL TO HOTEL
 16. HOTEL SIGNAGE

P2 ISSUED FOR PLANNING SUBMISSION	10/11/09
- MATERIALS KEY REVISED	
P1 ISSUED FOR PLANNING SUBMISSION	06/11/09
Rev	Date

ROLFE JUDD

PLANNING
ARCHITECTURE
INTERIORS

Old Church Court
Claydon Road
The Oval
London SW18 1HZ
Telephone: 020 7556 1500
Fax: 020 7556 1501
www.rolfe-judd.co.uk

Client

Solum
REGENERATION

Network Rail & Kier in partnership

Project
EPSOM STATION

Drawing
**DETAIL BAY
ELEVATION AND SECTION 1**

Scale	Date	Drawn
1:20 (A1)	JUL 09	JR

Drawing No	Revision
4630 / T21S101	P2

CAD Ref No
©: \\4630\T_Series\T20\T21S101
© Copyright Rolfe Judd Ltd

This scale is 100mm in length when printed of the size indicated in the title block.