



WARD PROFILE

WEST EWELL



The Hogsmill River

February 2005



Contents

Notes and Definitions	3
Summary of West Ewell Ward	4
1. Introduction	5
2. Population	6
2.1 Population Density.....	6
2.2 Age Profile.....	6
2.3 Ethnicity.....	8
2.4 Country of Origin	9
2.5 Religion	9
2.6 Health and Provision of Care.....	10
2.7 Disability Living Allowance Claimants.....	10
3. Household Information	11
3.1 Number of Households.....	11
3.2 Household Composition	11
3.3 Housing Tenure.....	11
3.4 Accommodation Type.....	12
3.5 Average Number of Rooms per Household.....	12
3.6 Communal Establishments.....	12
4. Employment and Socio-Economic Groups	13
4.1 Economic Activity	13
4.2 Occupation	13
4.3 Industry.....	14
4.4 Level of Qualifications for Working Age Population	15
4.5 Share of District Employment	15
4.6 Socio-Economic Classification	16
5. Social Deprivation	17
5.1 Definition of Super Output Areas by Road.....	18
6. Transport	19
6.1 Car Availability.....	19
6.2 Proportion of Households with 2+ Cars	19
6.3 Travel to Work	20
7. Crime	20

Notes and Definitions

Ward profiles have been compiled using information from the 2001 Census of Population and other sources for example, Local Knowledge website, Housing Needs Survey 2004 and the Crime Audit 2004.

A household comprises one person living alone, or a group of people (not necessarily related) living at the same address with common housekeeping – that is, sharing either a living room or a sitting room or at least one meal a day.

All people who were working in the week before the Census or were looking for work and were available to start work within 2 weeks are described as economically active. Full time students who are economically active are included but are identified separately in the classification. The economic activity questions are only asked of people aged 16 to 74. The proportion given is the percentage of the population aged 16-74.

The National Statistics Socio-economic Classification (NS-SEC) provides an indication of socio-economic position based on occupation. It is an Office for National Statistics standard classification. Not classifiable for other reasons includes people who have not been coded and those who cannot be allocated to an NS-SEC category.

A dependent child is a person aged 0 to 15 in a household (whether or not in a family) or aged 16 to 18 in full-time education and living in a family with his or her parent(s).

An overcrowded household has an occupancy rating of –1 or less. The Occupancy rating provides a measure of under occupancy and over crowding. It relates the actual number of rooms to the number of rooms ‘required’ by the members of the household (based on a relationship between them and their ages). A rating of –1 means that the household has one too few rooms.

Households lacking amenities are those without central heating and/or without sole use of bath/shower and toilet.

The DETR Index of Multiple Deprivation 2004 calculates values for the relative level of need, derived from 6 main indices. Higher values indicate greater need. The UK average is 21.67. The 7 domain indices are: income, employment, health deprivation and disability, education skills and training, barriers to housing and services, living environment and crime.

NB. Figures may not add up to 100% due to rounding.

Where data has not been sourced it is from the 2001 Census. Data not from the Census is sourced separately underneath the corresponding data.

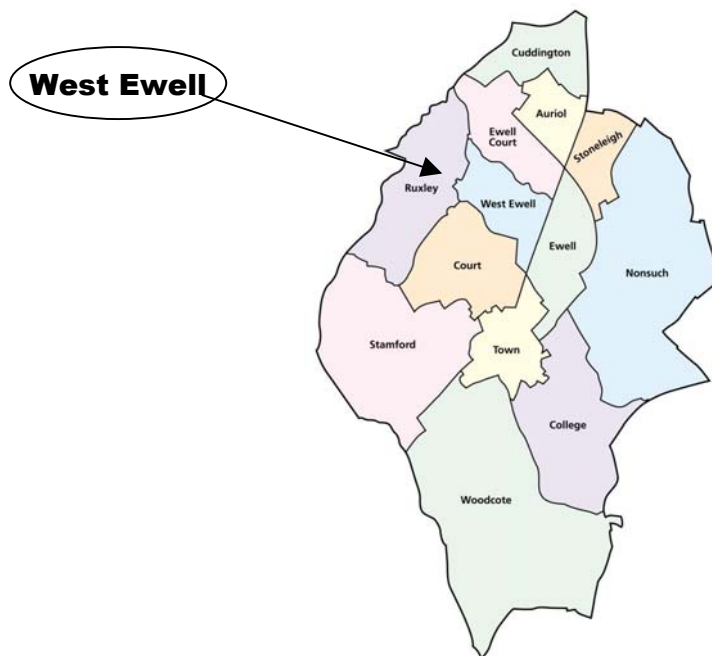
If you have any comments or queries on any aspect of the profile, please contact Sara Childs or Kate Cheminais in the Service Improvement Unit on 01372 732000.

Summary of West Ewell Ward

Location of ward in the Borough	North west
Population	5648
Population density	45.8 people per hectare
Size of Ward in Hectares	123
Age profile	Greatest age group proportion 30-44 (25.7%)
Ethnicity	7.4% ethnic minorities
DLA claimants	25.05 people per 1000 16+ population
Long-term Limiting Illness	13.2% of population
No of households	2143
Average number of people per household	2.6
Tenure	88.1% owner occupier
Accommodation type	59.2% semi-detached
Economically active	74.5%
Occupation	16.9% associate and technical occupations
Industry	16.3% real estate; renting and defence
Share of district employment	8.89%
Level of degree+ qualification	21.37%
Social deprivation DETR Index 2004	6.21
Car availability	1.42 cars per household
Proportion of 2+ car households	43.58%
Travel to work	58.8% car or van
Proportion of Crime	4% of all crime committed in the Borough

1. Introduction

West Ewell ward is in the north west of the Borough. It borders Ewell Court ward to the north, Ewell ward to the east, Court ward to the south and Ruxley ward to the west.



From medieval times, the area where West Ewell now lies was part of Marsh, one of three commons in Ewell. There was also farming in the area. In the 18th Century, the river became more important to the local economy. The area along the river, close to where Ewell Court House stands today, was notable for its gunpowder mills. Milling, with power supplied by the river, was an important local industry and the 1871 Census noted that the mills employed 156 workers. Gunpowder making is a dangerous business - an explosion in 1812 was heard as far away as Horsham, and another in 1863 claimed the lives of three men. The mills closed down in 1875, probably as the Explosives Act of the same year would have made running them uneconomically viable.

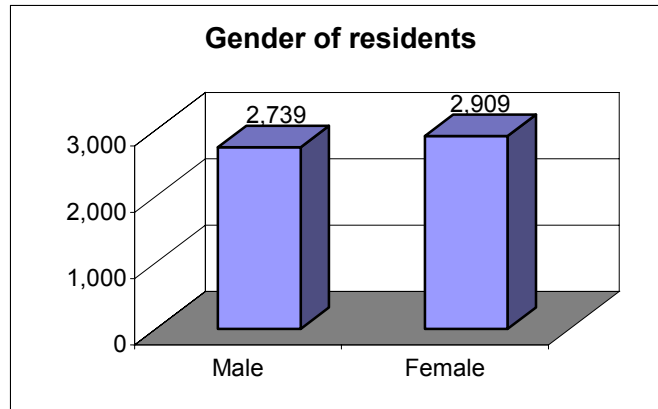
Prior to 1891, the area of West Ewell was known as the Upper and Lower Marsh. Due to its proximity to the Hogsmill River, it was subject to flooding. In 1803, there were just a small number of houses, mostly lived in by agricultural workers and gunpowder workers. The introduction of the railway encouraged middle-class commuters to move to the area, and by 1891 the area had changed dramatically.

By the beginning of the twentieth century, West Ewell was a distinct community with its own school, shops and church. After 1900, the area developed in the same way as much of the rest of the area. More people moved into the area necessitating the construction of new houses, shops and schools.

The south bank of the Hogsmill Open Space, managed by the Council, signifies the northern border of West Ewell.

2. Population

West Ewell ward has a population of 5,648 people, an increase of 6.5% from 1991. Females slightly out-number males (a trend seen both Borough and county wide), with 2,909 females compared to 2,739 males.

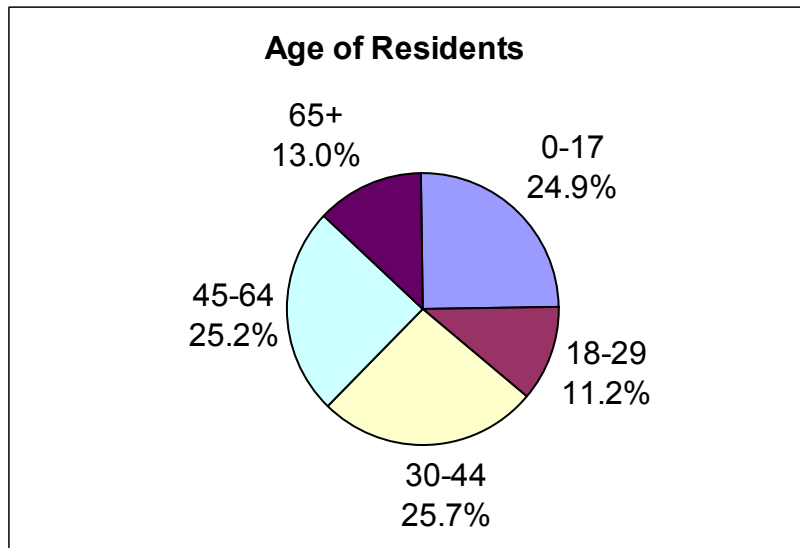


Please note that the 2001 Census data is the most current population data at ward level.

2.1 Population Density

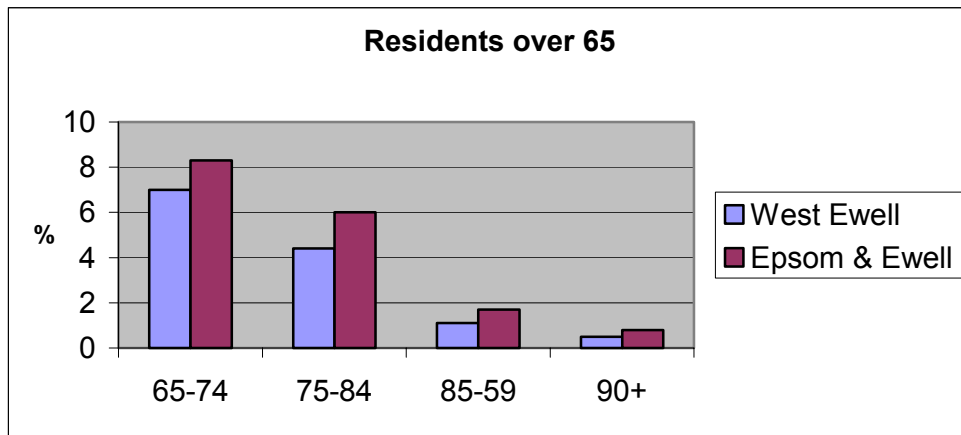
West Ewell ward covers an area of 123 hectares and has a population density of 45.8 people per hectare. This makes it one of the most densely populated wards in the Borough, where the average density is 19.7 pph.

2.2 Age Profile

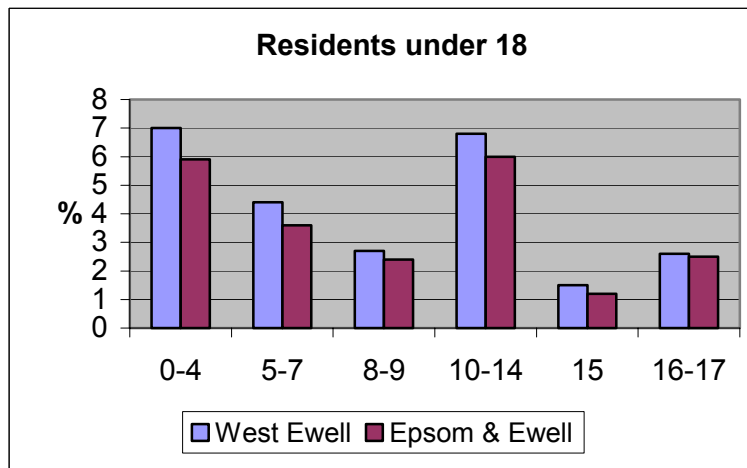


The population of West Ewell ward is young compared to the average of the Borough. Residents aged over 65 make up just 13.0% of the population, the second lowest proportion in the Borough (the average is 16.8%), and the ward has the highest proportion of residents under the age of 18 (24.9%, the average is 21.7%)

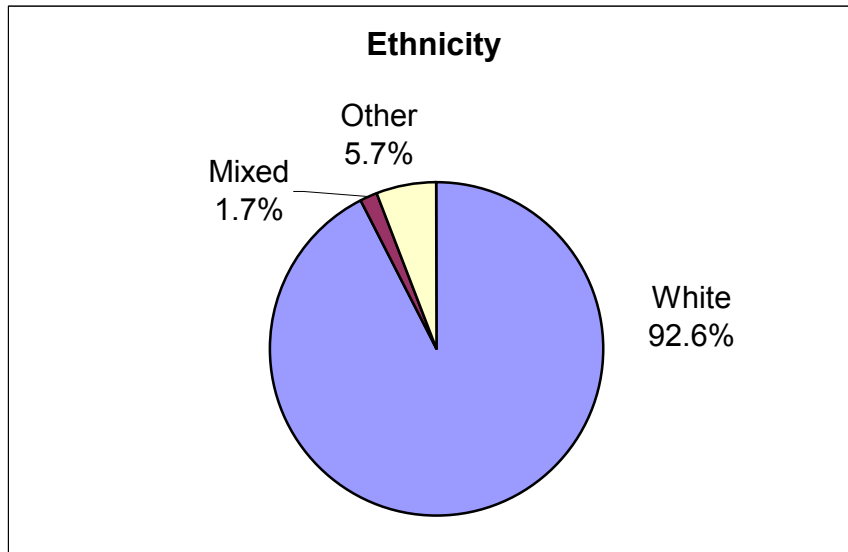
West Ewell ward has low proportions of residents aged between 65 and 84 compared to the Borough average, and the lowest percentage of residents aged over 85.



West Ewell ward has the highest proportion of residents under the age of 16, and there are a particularly high proportion of children under 4. 22.3% of the residents of the ward are under the age of 16.

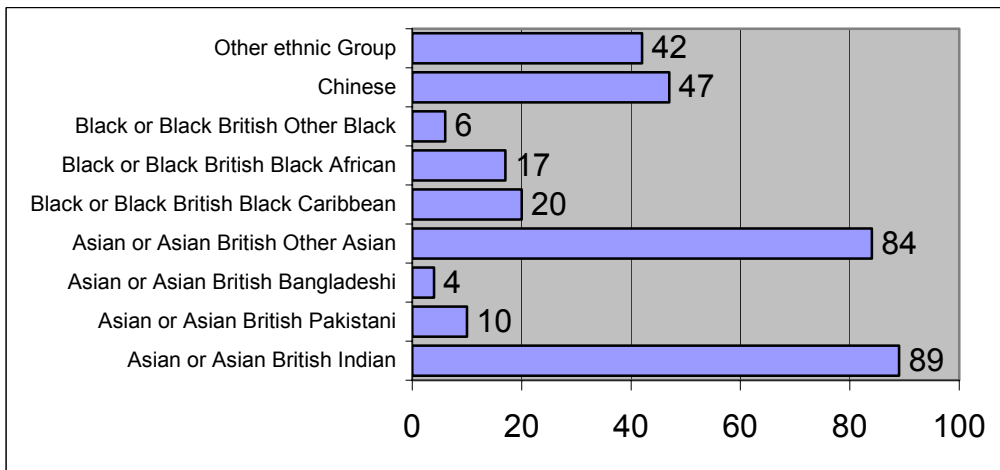


2.3 Ethnicity



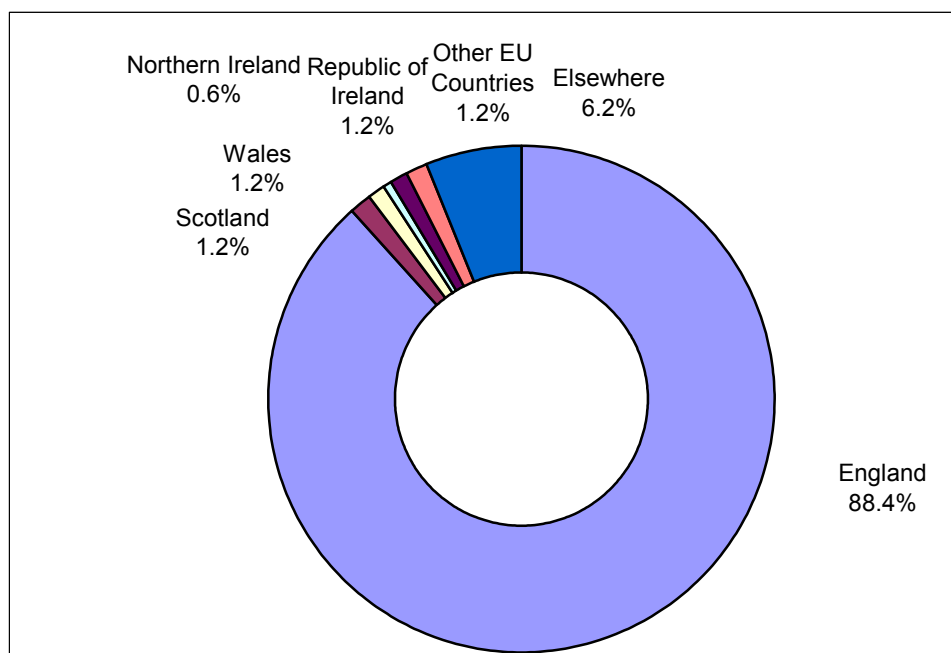
7.4% of the ward’s residents do not class themselves as white, which includes 1.7% who are of a mixed race background. This compares with the Borough average of 8.7%, including 1.8% mixed race.

The table below shows the breakdown of residents by ethnic origin in terms of absolute numbers.



The largest ethnic minority in West Ewell ward is Asian or Asian British Indian, which makes up 1.6% of the total population.

2.4 Country of Origin



The majority of residents (88.4%) were born in England, the highest proportion in the Borough. A low proportion of residents were born outside of the EU (6.2%, the average for Epsom & Ewell is 8.6%).

2.5 Religion

Religion	West Ewell	Epsom & Ewell
Christian	74.0%	73%
Buddhist	0.4%	0.5%
Hindu	2.1%	1.8%
Jewish	0.1%	0.4%
Muslim	0.8%	1.9%
Sikh	0.1%	0.1%
Other religions	0.4%	0.3%
No religion	14.2%	14.8%
Religion not stated	7.9%	7.2%

The majority of people living in West Ewell ward are Christian. The ward has the lowest proportion of Jews in the Borough.

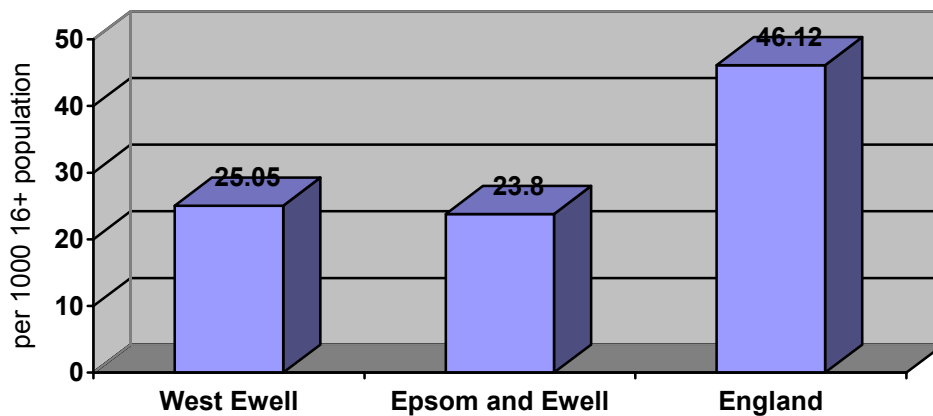
2.6 Health and Provision of Care

13.2% of residents in West Ewell ward have a limiting long-term illness, lower than the Borough average (14.3%). The same proportion of people judge their health as good in West Ewell compared to the Borough as a whole (73.8%), and the proportion in good health here is more than in England as a whole (68.8%).

	West Ewell	Epsom & Ewell
All people who provide unpaid care	9.7%	9.8%
All people who provide unpaid care: 1-19 hours a week	7.6%	7.6%
All people who provide unpaid care: 20-49 hours a week	0.9%	0.9%
All people who provide unpaid care: 50+ hours a week	1.3%	1.4%

9.7% of West Ewell residents (548 individuals) provide unpaid care, with 73 individuals (1.3%) providing it for over 50 hours a week.

2.7 Disability Living Allowance Claimants



West Ewell ward has a higher proportion of Disability Living Allowance claimants than the Borough average but is significantly lower than the national average.

Source: Local Knowledge Website, December 2004

3. Household Information

3.1 Number of Households

There are 2,143 households in West Ewell ward, with an average of 2.6 people per household (higher than the Borough average of 2.5).

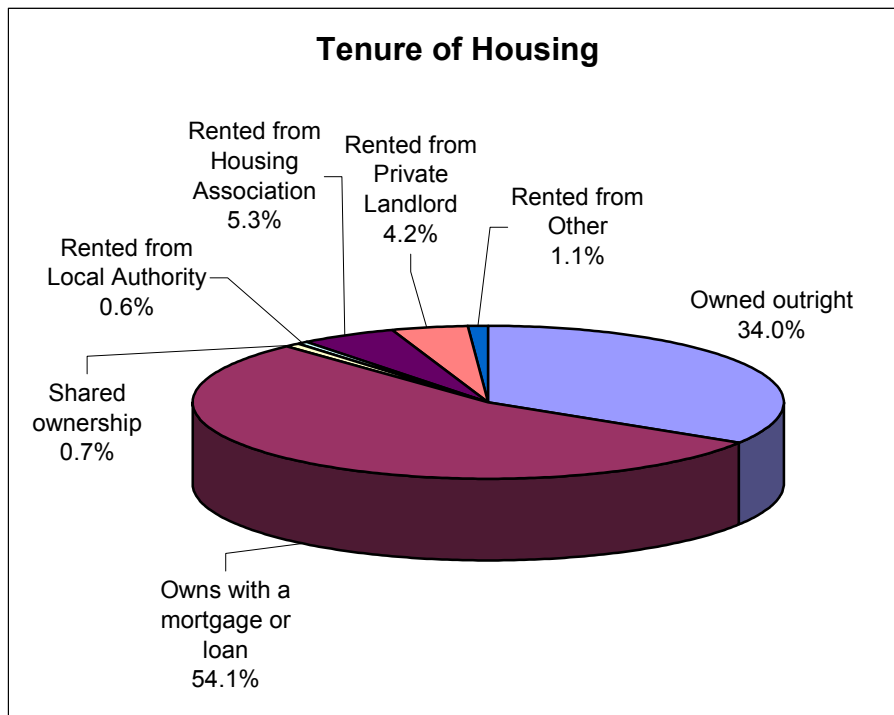
3.2 Household Composition

Households Comprising	West Ewell	Epsom & Ewell
One person: Pensioner	11.9%	14.9%
One person: Other	8.9%	12.0%
Households with pensioners only	20.2%	25.5%
Lone parents with dependent children	5.6%	4.6%
Households with dependent children	37.5%	29.6%

The above table does not add up to 100% as it contains only the information thought to be significant.

West Ewell ward has far fewer one-person households than the Borough average (20.8% compared to 26.9%). The ward has the most households in the Borough with dependent children, and a slightly higher proportion of households with lone parents.

3.3 Housing Tenure



88.1% of properties in West Ewell are occupied by their owner. This is higher than the Borough average of 82.3%, though the percentage owned outright is lower

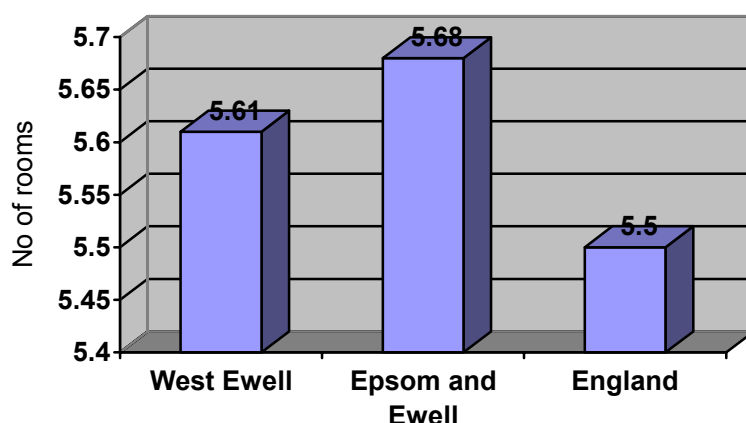
(34.0% compared to the Borough average of 37.1%). There are relatively few rented properties (only 11.1%), compared with the rest of the Borough (17.2%).

3.4 Accommodation Type

Accommodation Type	West Ewell
Detached	11.9%
Semi-detached	59.2%
Terraced	22.5%
Purpose built flats or tenement	5.4%
Part of converted house (including bed-sits)	0.5%
In commercial building	2.3%
Caravan or other mobile or temporary structure	0.0%

Over 50% of the housing in West Ewell ward is semi-detached, and 22.5% terraced. 1.7% of properties are vacant.

3.5 Average Number of Rooms per Household



West Ewell ward has a lower average number of rooms per household than the Borough average but is higher than the national average.

Source: Housing Needs Survey, 2004

3.6 Communal Establishments

Communal establishments include hospitals, retirement homes, other medical and care establishments (for example nursing homes or hospices), hostels and prisons.

There are three communal establishments in West Ewell, with a total of 19 residents. 15 of these residents have a limiting long-term illness.

4. Employment and Socio-Economic Groups

4.1 Economic Activity

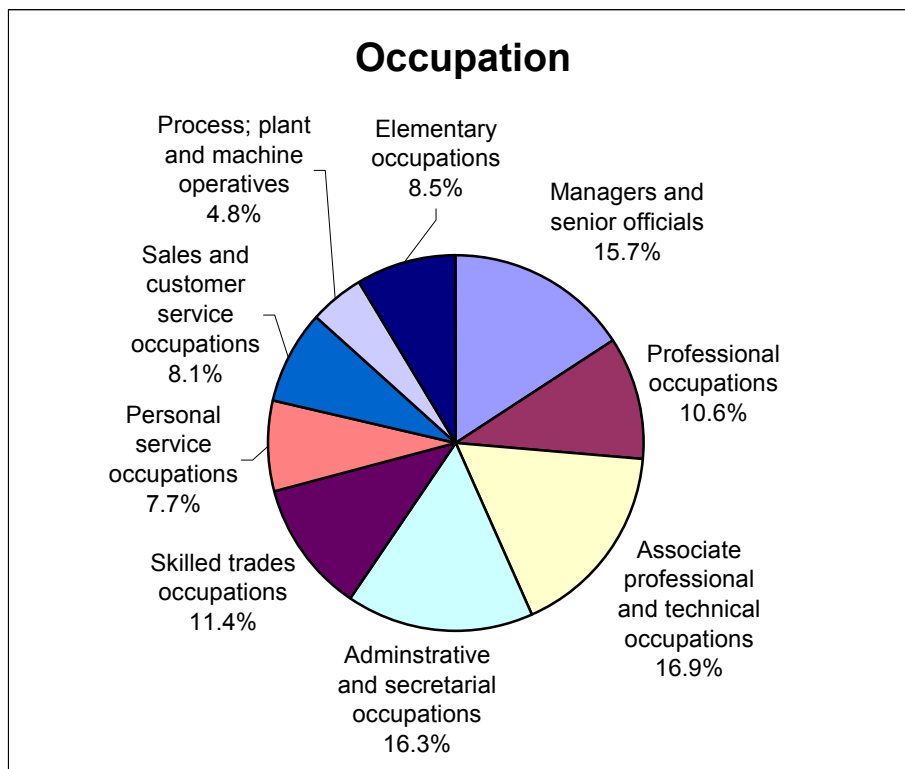
	West Ewell	Epsom & Ewell
Economically active: Part Time	13.6%	11.7%
Economically active: Full time	46.3%	43.9%
Self Employed	10.0%	10.3%
Unemployed	1.6%	1.8%
Retired	11.9%	14.1%

The above table does not add up to 100% as it contains only the information thought to be significant.

74.5% of the ward’s residents are economically active. This is the highest proportion in the Borough, where 70.5% of people are active. The ward has slightly lower unemployment than the Borough average, and a fairly low proportion of residents who are retired.

4.2 Occupation

There are 2,950 people in employment in West Ewell ward. The chart below shows the areas in which they work.



The highest proportion of people in West Ewell ward work in associate professional and technical occupations (16.9%) and in administrative and secretarial occupations (16.3%). Far fewer people work as managers and senior officials than the Borough average (19.5%). A high proportion of people work in skilled trade occupations (11.4%) compared with the Borough average (8.9%)

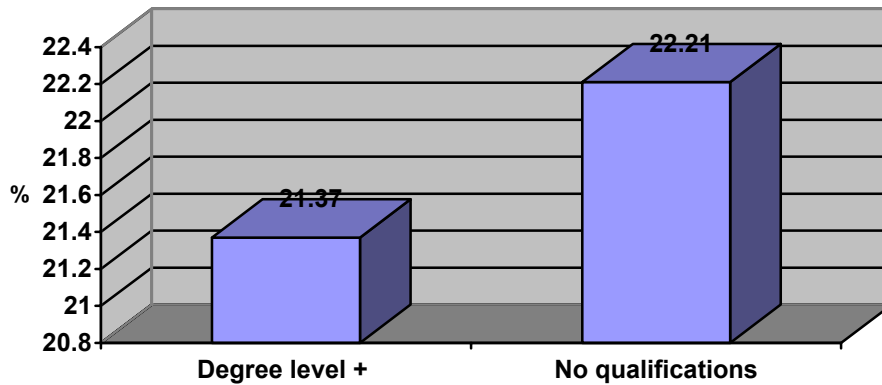
4.3 Industry

	West Ewell	Epsom & Ewell
Agriculture, hunting, forestry	0.9%	0.7%
Mining & Quarrying	0.2%	0.4%
Manufacturing	7.4%	7.2%
Electricity, gas and water supply	0.6%	0.5%
Construction	8.0% (4)	6.6%
Wholesale & retail trade; repair of motor vehicles	15.3% (2)	14.9% (2)
Hotels and catering	2.3%	3.4%
Transport, storage and communication	7.0%	7.1%
Financial intermediation	6.9%	8.1% (4)
Real estate; renting and business activities	16.3% (1)	18.9% (1)
Public administration and defence	7.7%	6.7%
Education	7.9% (5)	7.9% (5)
Health and Social Work	12.8% (3)	11.5% (3)
Other	6.6%	6.3%

Numbers in brackets denote the top 5 areas of work

The highest proportion of people living in West Ewell work in real estate; renting and business activities, or wholesale & retail trade; repair of motor vehicles. 18 residents work in electricity, gas and water supply.

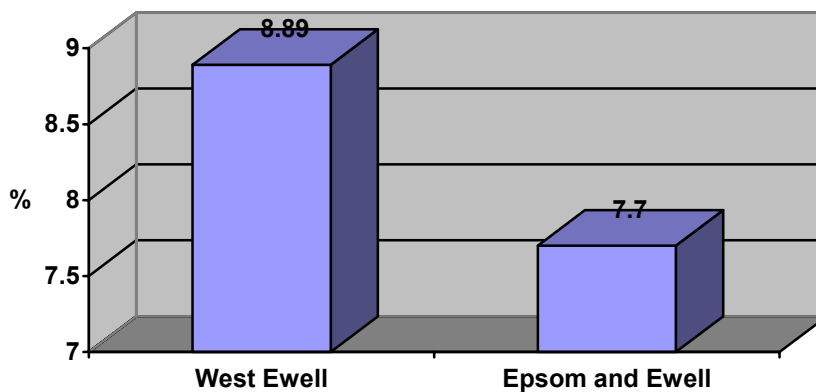
4.4 Level of Qualifications for Working Age Population



West Ewell ward has a similar proportion of people educated to degree level + than those with no qualifications.

Source: Local Knowledge Website, December 2004

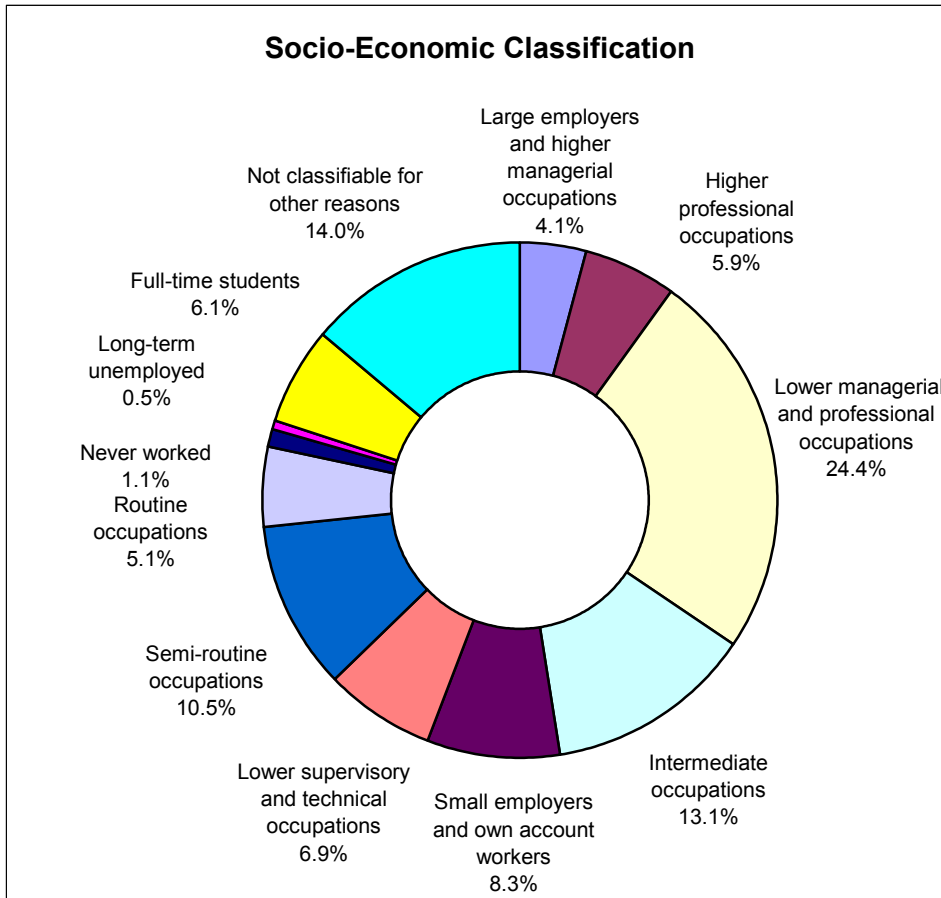
4.5 Share of District Employment



West Ewell ward has a higher share of district employment than the Borough average. It has the highest proportion of district employment.

Source: Local Knowledge Website, December 2004

4.6 Socio-Economic Classification



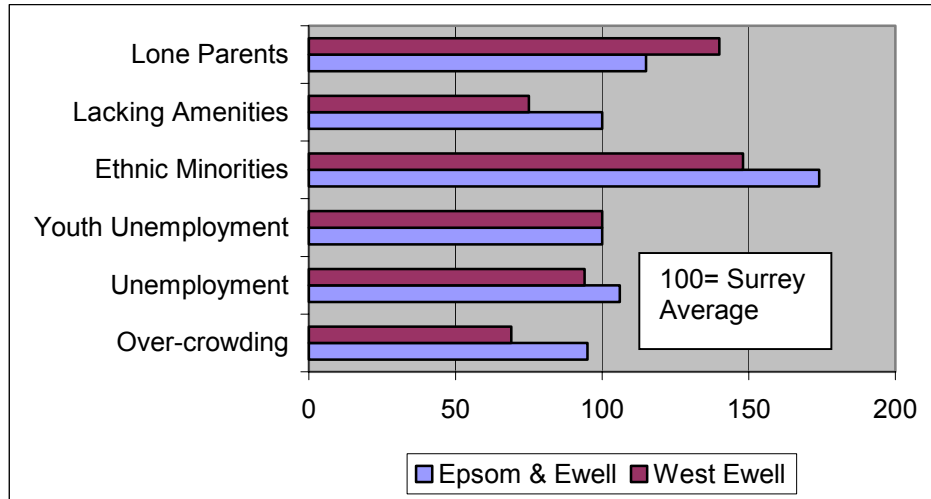
The table above shows the National Statistics Socio-Economic Classification for the 3,804 people aged 16-74 living in West Ewell.

The highest proportion of people work in lower managerial and professional occupations. West Ewell has a high proportion of people working in semi-routine occupations (10.5%) compared to the Borough average (8.1%)

There is a low proportion of people who have never worked than the Borough average (1.1% compared to 1.7%), but a slightly higher proportion of long-term unemployed (the average is 0.4%).

5. Social Deprivation

The table below shows indicators for social deprivation for both West Ewell ward and Epsom & Ewell as a whole, as compared to the Surrey average.



Using these indicators, West Ewell compares well with both Epsom & Ewell and Surrey. Fewer houses are overcrowded or lack amenities, though there is a slightly higher proportion of lone parent households.

West Ewell’s score on the DETR index of deprivation is 6.21, just lower than the Borough average (6.83). Using this index, West Ewell is rated as the 5th most deprived ward in the Borough and is in the top third of deprived wards in Surrey (77/207) i.e. there are 130 more deprived wards.

West Ewell has been split up into four Super Output Areas.

Super Output Area	Rank in Borough (out of 44, 1=most deprived)
West Ewell 1	16
West Ewell 2	11
West Ewell 3	20
West Ewell 4	19

West Ewell has a close rank in terms of Super Output Areas indicating a similar level of deprivation across the whole ward.

Source: ODPM

5.1 Definition of Super Output Areas by Road

West Ewell 1

Brook Close, Chessington Road, Dee Way, First Avenue, Gibraltar Crescent, Green Lanes, Longmead Road, Marsh Avenue, Meadowview Road, Station Avenue.

West Ewell 2

Way, Crosslands Road, Daleside Road, Gadesden Road, Poole Road, Scotts Farm Road, Shawford Road, Vernon Close.

West Ewell 3

Belfield Road, Chessington Road, Green Lanes, Kingsmead Close, Limecroft Close, Longmead Road, Northcroft Road, Oakdale Road, Plough Road, Southville Close, Station Avenue, Sunnymede Avenue, Worthfield Close.

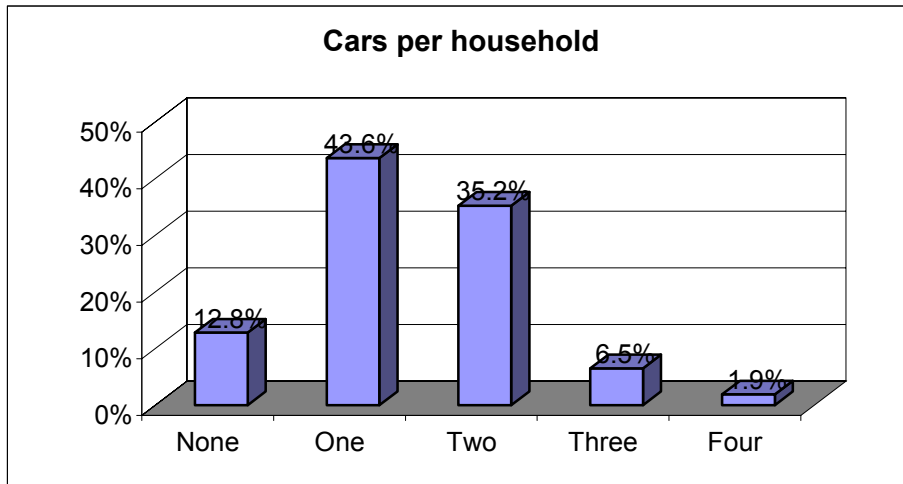
West Ewell 4

Chessington Road, Chesterfield Road, Church Road, Cottage Road, Heatherside Road, Plough Road, Poole Road.

Source: ODPM

6. Transport

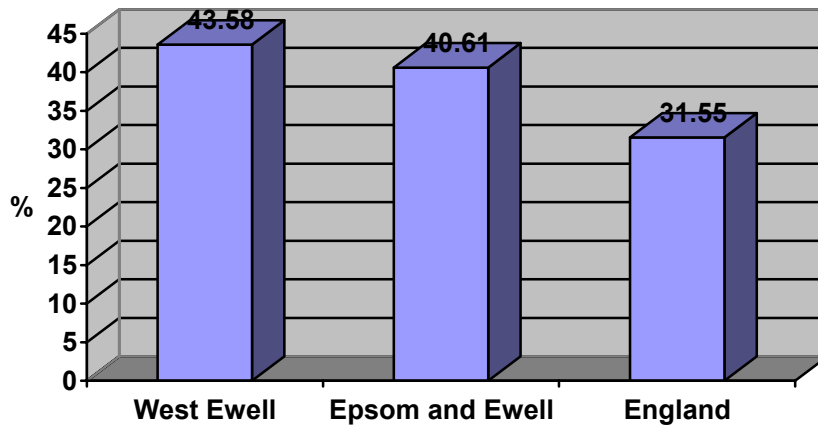
6.1 Car Availability



There is an average of 1.42 cars per household in West Ewell, higher than the Borough average of 1.37. The ward has a low proportion of households without a car compared to the Borough average (12.8% compared to 14.1%)

Source: Local Knowledge Website, December 2004

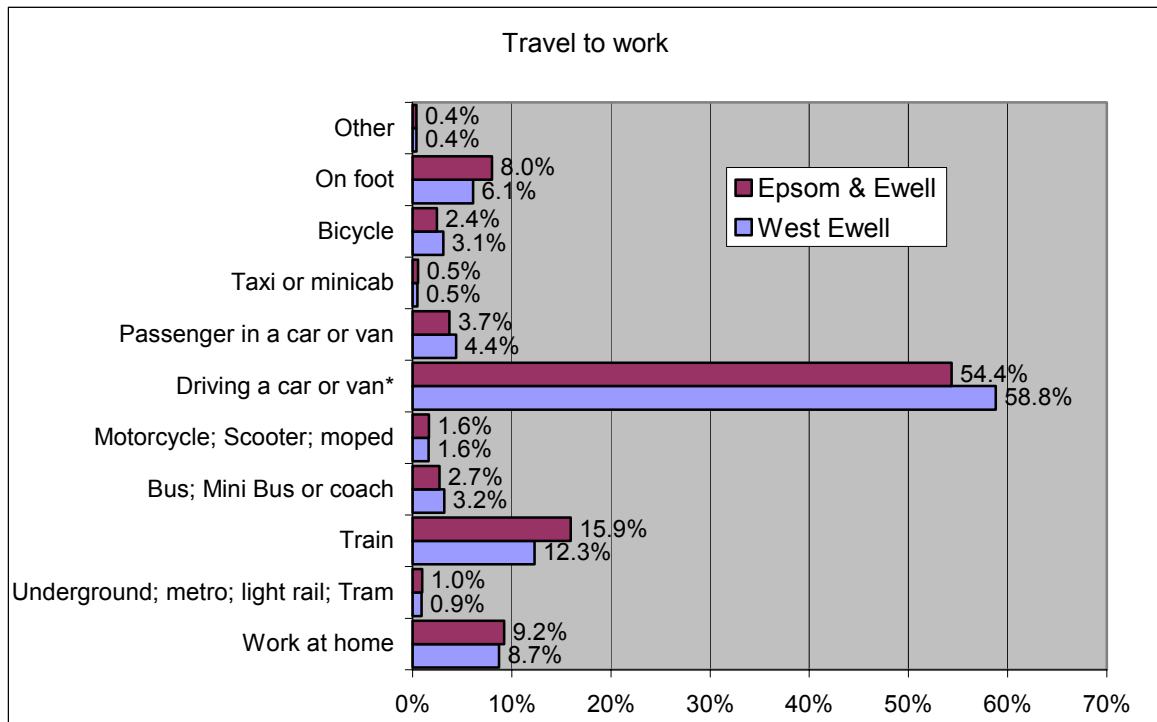
6.2 Proportion of Households with 2+ Cars



West Ewell ward has a higher proportion of households with 2+ cars than the averages for the Borough and nationally.

Source: Local Knowledge Website, December 2004

6.3 Travel to Work



Driving to work is the most popular option for the residents of West Ewell, with over half of people in the ward using this option.

Source: Local Knowledge Website, December 2004

7. Crime

4% of all crime in the Borough occurs in West Ewell ward. West Ewell ward is one of the hotspots for domestic violence in the Borough. This crime type is on the decrease and therefore is defined as a non-priority area.

Source: Crime Audit, 2004