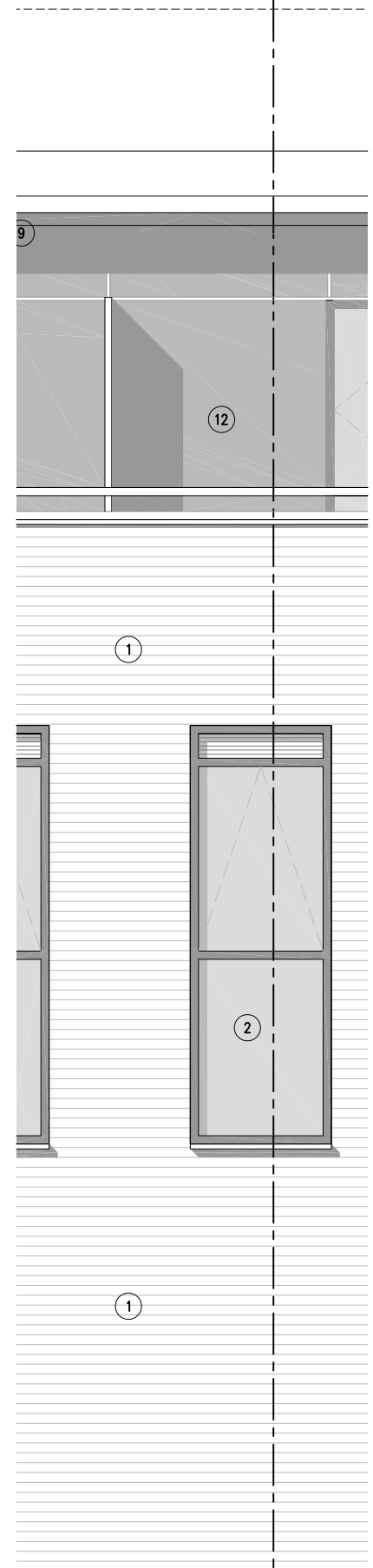
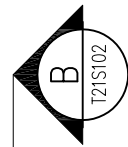
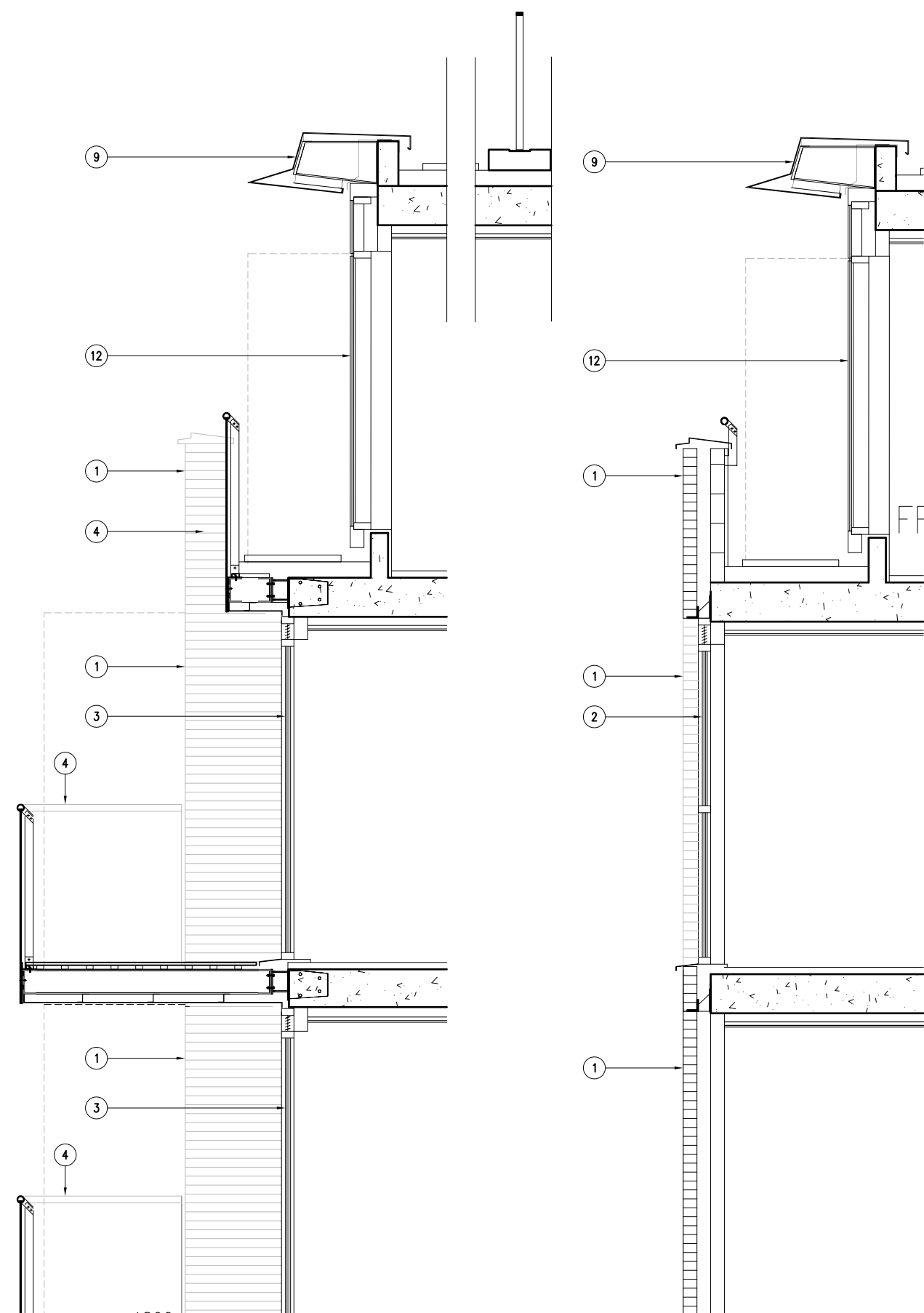


1 NORTH ELEVATION EXTRACTS OF RESIDENTIAL  
SCALE: 1:20 (A1)



A SECTION A-A  
SCALE: 1:20 (A1)



B SECTION B-B  
SCALE: 1:20 (A1)

- NOTES
- 1 The Contractor must check and confirm dimensions
  - 2 All discrepancies must be reported and resolved by the Architect before works commence
  - 3 This drawing is not to be scaled
  - 4 All work and materials to be in accordance with current applicable Statutory Legislation and to comply with all relevant Codes of Practice and British Standards.

- MATERIALS KEY LEGEND:
1. BRICKWORK
  2. METAL RECESSED WINDOWS WITH BRICKWORK REVEALS
  3. SLIDING WINDOWS
  4. METAL BALCONIES WITH STAINLESS STEEL HANDRAIL, GLASS BALUSTRADE WITH LOW LEVEL FRIT AND METAL SOFFIT PANELS.
  5. TILED WALL
  6. CAR PARK VENTILATION INCORPORATING ARTWORK
  7. WINDOWS WITH METAL PANELS.
  8. PROJECTING WINDOWS
  9. CANOPY
  10. METAL WINDOWS WITH STAGGERED GLAZING, TO HOTEL.
  11. FEATURE WALL OVER STATION ENTRANCE FORMED FROM COLOURED GLASS AND GLAZED INSULATED SHADOW BOX PANELS.
  12. SIXTH FLOOR WINDOW AND METAL PANEL SYSTEM.
  13. RENDER WALL
  14. GLASS CHANNEL STAIR CORE
  15. METAL PANEL TO HOTEL
  16. HOTEL SIGNAGE

**P06**  
FFL 65.750

P2 ISSUED FOR PLANNING SUBMISSION - MATERIALS KEY REVISED	10/11/09
P1 ISSUED FOR PLANNING SUBMISSION	06/11/09
Rev	Date

**ROLFE JUDD**

PLANNING  
ARCHITECTURE  
INTERIORS

Old Church Court  
Claydon Road  
The Oval  
London SW18 1HZ  
Telephone: 020 7556 1500  
Fax: 020 7556 1501  
www.rolfe-judd.co.uk

Client

**Solum**  
REGENERATION

Network Rail & Kier in partnership

Project  
**EPSOM STATION**

Drawing  
**DETAIL BAY  
ELEVATION AND SECTION 2**

Scale 1:20 (A1)	Date JUL 09	Drawn JR
Drawing No 4630 / T21S102	Revision P2	
CAD Ref No C:\4630\T_Series\T20\T21S102		
© Copyright Rolfe Judd Ltd		

This scale is 100mm in length when printed of the size indicated in the title block.