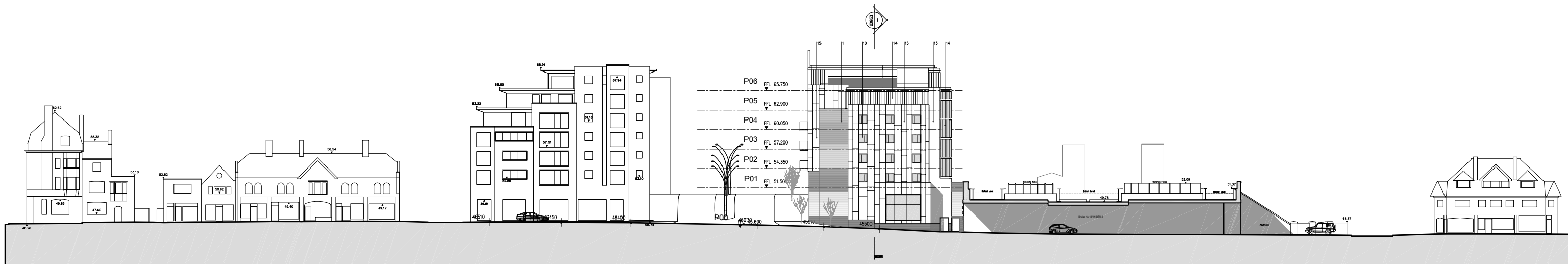
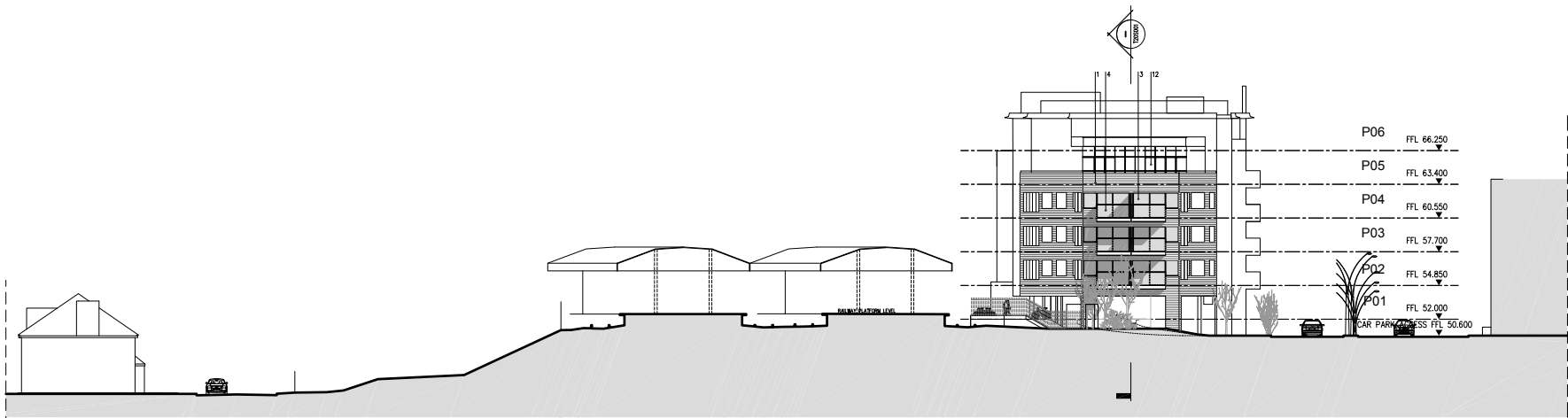


- NOTES**
- 1 The Contractor must check and confirm dimensions
 - 2 All discrepancies must be reported and resolved by the Architect before works commence
 - 3 This drawing is not to be used
 - 4 All work and materials to be in accordance with current applicable Statutory Legislation and to comply with all relevant Codes of Practice and British Standards.

- MATERIALS KEY LEGEND:**
1. BRICKWORK
 2. METAL RECESSED WINDOWS WITH BRICKWORK REVEALS
 3. SLIDING WINDOWS
 4. METAL BALCONIES WITH STAINLESS STEEL HANDRAIL, GLASS BALUSTRADE WITH LOW LEVEL FRIT AND METAL SOFFIT PANELS
 5. TILED WALL
 6. CAR PARK VENTILATION INCORPORATING ARTWORK
 7. WINDOWS WITH METAL PANELS
 8. PROJECTING WINDOWS
 9. CANOPY
 10. METAL WINDOWS WITH STAGGERED GLAZING TO HOTEL
 11. FEATURE WALL OVER STATION ENTRANCE FORMED FROM COLOURED GLASS AND GLAZED INSULATED SHADOW BOX PANELS
 12. SIXTH FLOOR WINDOW AND METAL PANEL SYSTEM
 13. ROOFER WALL
 14. GLASS CHANNEL STAIR CORE
 15. METAL PANEL TO HOTEL
 16. HOTEL SIGNAGE



1 EAST ELEVATION
SCALE: 1:200 (A1)



2 WEST ELEVATION
SCALE: 1:200 (A1)

- Revisions:**
- | Rev | Date | Description |
|-----|----------|--|
| P3 | 04/12/09 | ISSUED FOR PLANNING SUBMISSION - SURVEY CLARIFICATION EXTENDED |
| P2 | 10/11/09 | DRAWING SCALE REVISED AS REQUESTED |
| P1 | 06/11/09 | ISSUED FOR PLANNING SUBMISSION - MATERIALS KEY REVISED |

ROLFE JUDD
PLANNING ARCHITECTURE INTERIORS
One Church Street
Chichester, West Sussex PO19 1UG
Telephone: 01243 776610
Fax: 01243 776615
www.rolfe-judd.co.uk

Solum
REGENERATION
Network Rail & Kier in partnership

Project
EPSOM STATION

Drawing
EAST AND WEST ELEVATIONS

Scale	Date	Drawn
1:200 (A0)	JUL 09	WS
Drawing No	Revision	Drawn
4630 // T20E002	P3	WS