



# WARD PROFILE

# EWELL



The Dog Gate at Bourne Hall

**February 2005**



## Contents

Notes and Definitions .....	3
Summary of Ewell Ward .....	4
<b>1. INTRODUCTION .....</b>	<b>5</b>
<b>2. POPULATION .....</b>	<b>7</b>
2.1 Population Density.....	7
2.2 Age profile .....	7
2.3 Ethnicity.....	9
2.4 Country of Origin .....	10
2.5 Religion .....	10
2.6 Health and Provision of Care.....	11
2.7 Disability Living Allowance Claimants.....	11
<b>3. HOUSEHOLD INFORMATION.....</b>	<b>12</b>
3.1 Number of Households.....	12
3.2 Household Composition .....	12
3.3 Housing Tenure .....	12
3.4 Accommodation Type.....	13
3.5 Average Number of Rooms per Household.....	13
3.6 Communal Establishments.....	14
<b>4. EMPLOYMENT AND SOCIO-ECONOMIC GROUPS .....</b>	<b>15</b>
4.1 Economic Activity .....	15
4.2 Occupation .....	15
4.3 Industry.....	16
4.4 Level of Qualifications in Working Age Population .....	17
4.5 Share of District Employment .....	17
4.6 Socio-Economic Classification .....	18
<b>5. SOCIAL DEPRIVATION.....</b>	<b>19</b>
5.1 Definitions of Super Output Areas by Road.....	20
<b>6. TRANSPORT .....</b>	<b>21</b>
6.1 Car Availability.....	21
6.2 Proportion of Households with 2+ Cars .....	21
6.3 Travel to Work .....	22
<b>7. CRIME .....</b>	<b>22</b>

## **Notes and Definitions**

Ward profiles have been compiled using information from the 2001 Census of Population and other sources for example, Local Knowledge website, Housing Needs Survey 2004 and the Crime Audit 2004.

A household comprises one person living alone, or a group of people (not necessarily related) living at the same address with common housekeeping – that is, sharing either a living room or a sitting room or at least one meal a day.

All people who were working in the week before the Census or were looking for work and were available to start work within 2 weeks are described as economically active. Full time students who are economically active are included but are identified separately in the classification. The economic activity questions are only asked of people aged 16 to 74. The proportion given is the percentage of the population aged 16-74.

The National Statistics Socio-economic Classification (NS-SEC) provides an indication of socio-economic position based on occupation. It is an Office for National Statistics standard classification. Not classifiable for other reasons includes people who have not been coded and those who cannot be allocated to an NS-SEC category.

A dependent child is a person aged 0 to 15 in a household (whether or not in a family) or aged 16 to 18 in full-time education and living in a family with his or her parent(s).

An overcrowded household has an occupancy rating of –1 or less. The Occupancy rating provides a measure of under occupancy and over crowding. It relates the actual number of rooms to the number of rooms 'required' by the members of the household (based on a relationship between them and their ages). A rating of –1 means that the household has one too few rooms.

Households lacking amenities are those without central heating and/or without sole use of bath/shower and toilet.

The DETR Index of Multiple Deprivation 2004 calculates values for the relative level of need, derived from 6 main indices. Higher values indicate greater need. The UK average is 21.67. The 7 domain indices are: income, employment, health deprivation and disability, education skills and training, barriers to housing and services, living environment and crime.

NB. Figures may not add up to 100% due to rounding.

Where data has not been sourced it is from the 2001 Census. Data not from the Census is sourced separately underneath the corresponding data.

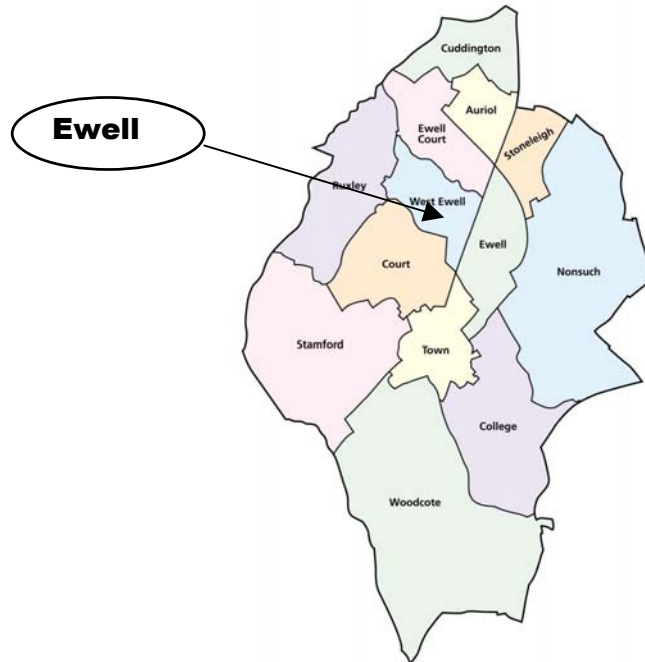
If you have any comments or queries on any aspect of the profile, please contact Sara Childs or Kate Cheminais in the Service Improvement Unit on 01372 732000.

## Summary of Ewell Ward

Location of ward in the Borough	Centre east
Population	4851
Population density	31.3 people per hectare
Size of Ward in Hectares	155
Age profile	Greatest age group proportion 45-64 (24.8%)
Ethnicity	5.6% ethnic minorities
DLA claimants	19.67 people per 1000 16+ population
Long-term Limiting Illness	16% of population
No of households	2231
Average number of people per household	2.2
Tenure	79% owner occupier
Accommodation type	35% detached
Economically active	70.3%
Occupation	21.4% managers and senior officials
Industry	20.6% Real estate; renting and business activities
Share of district employment	29.14%
Level of degree+ qualification	29.14%
Social deprivation DETR Index 2004	6.83
Car availability	1.23 cars per household
Proportion of 2+ car households	33.8%
Travel to work	52.4% car or van
Proportion of Crime	9% of all crime committed in the Borough

## 1. Introduction

Ewell ward is in the central part of the Borough. It shares borders with 7 of Epsom & Ewell's other wards, Stoneleigh, Nonsuch, College, Town, Court, West Ewell and Ewell Court wards.



The name 'Ewell' comes from the Old English "Aewiell", meaning 'the spring at the head of the river'. The origins of the village date back to 70AD when Roman surveyors constructing Stane Street, from London to Chichester had to change direction at the source of the Hogsmill River. Houses were built alongside the road and by 150AD, Ewell was the largest village in Surrey.

The major event of Tudor Ewell was the building of Nonsuch Park by Henry VIII, and part of the town was taken up by parkland. During this time, Ewell became a prosperous village, much bigger than nearby Epsom. The prosperity of Ewell continued after the demolition of Nonsuch in the eighteenth century, due to its proximity to the spas at Epsom. A stage-coach service into London encouraged London merchants to make their homes in the village, and many large houses were built

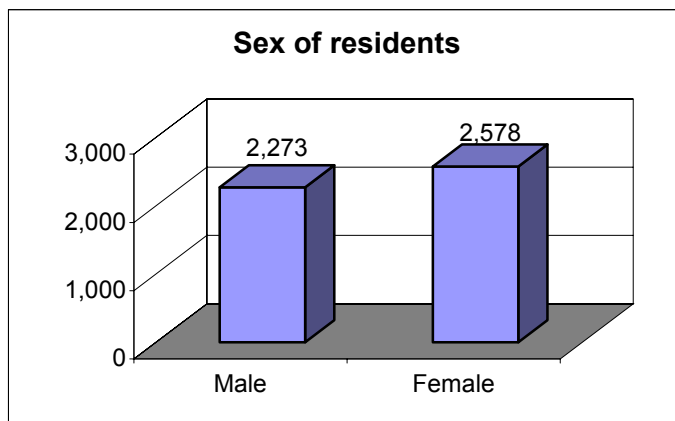
Ewell remained fairly rural until the First World War, when improved transport links into London created a demand for residential development in the area. Ewell Rural District Council was set up in 1894 and met in an upstairs room in the High Street. The Council lasted until 1933, when Ewell was merged with Epsom and the Borough as we now know it was granted its charter in 1937.

Ewell ward contains one of the council's venues, Bourne Hall. The present building stands on the site of a Georgian mansion know as Garaband Hall.

The old house fell into a state of disrepair and was demolished in the 1960's and was replaced by the new Bourne Hall in 1970. The building includes a community centre, library and local history museum.

## 2. Population

Ewell ward has a population of 4,851 people, a decrease of 0.5% from 1991. Females slightly out-number males (a trend seen both Borough and country wide), with 2,578 females compared to 2,273 males.

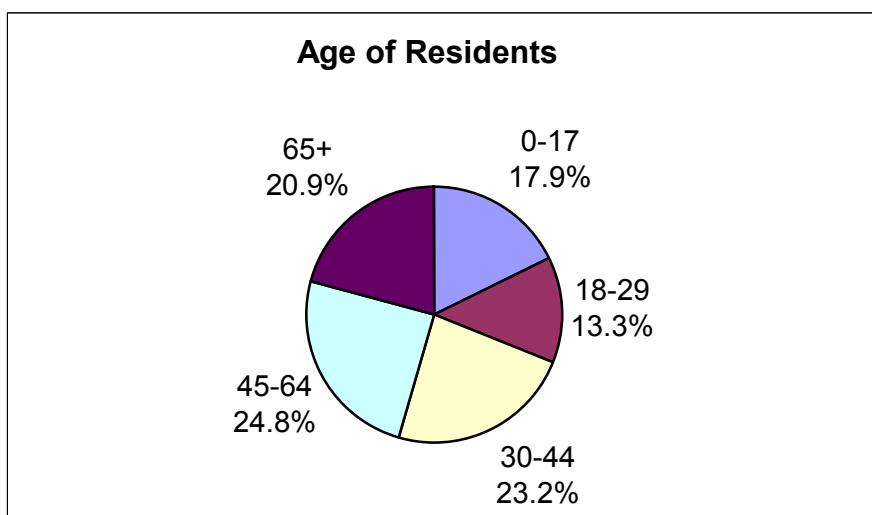


Please note that the 2001 Census data is the most current population data at ward level.

### 2.1 Population Density

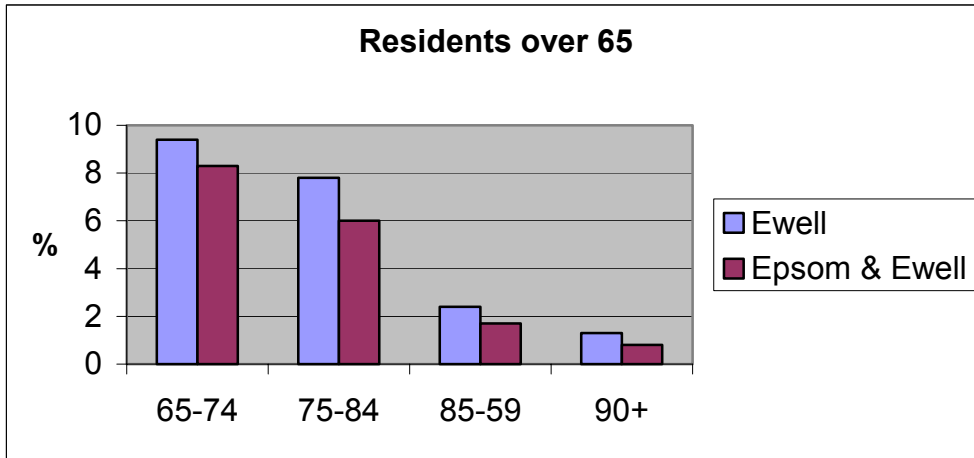
Ewell ward covers an area of 155 hectares and has a population density of 31.3 people per hectare. This places it among the most densely populated wards in the Borough.

### 2.2 Age profile

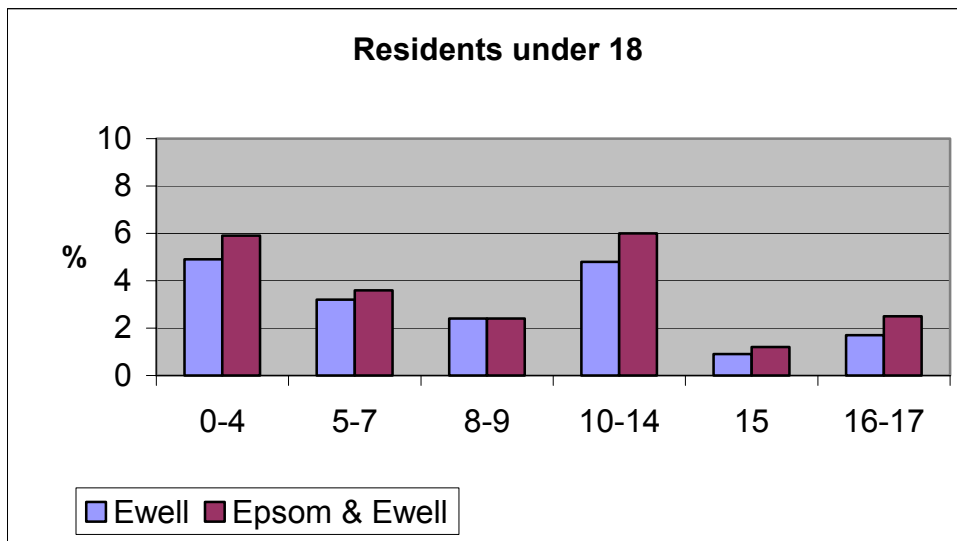


The population of Ewell ward is older compared to the Borough average. There are fewer people aged between 0-17 than the average (which is 21.7%) and the ward has the highest proportion of residents over the age of 65 (the Borough average is 16.8%)

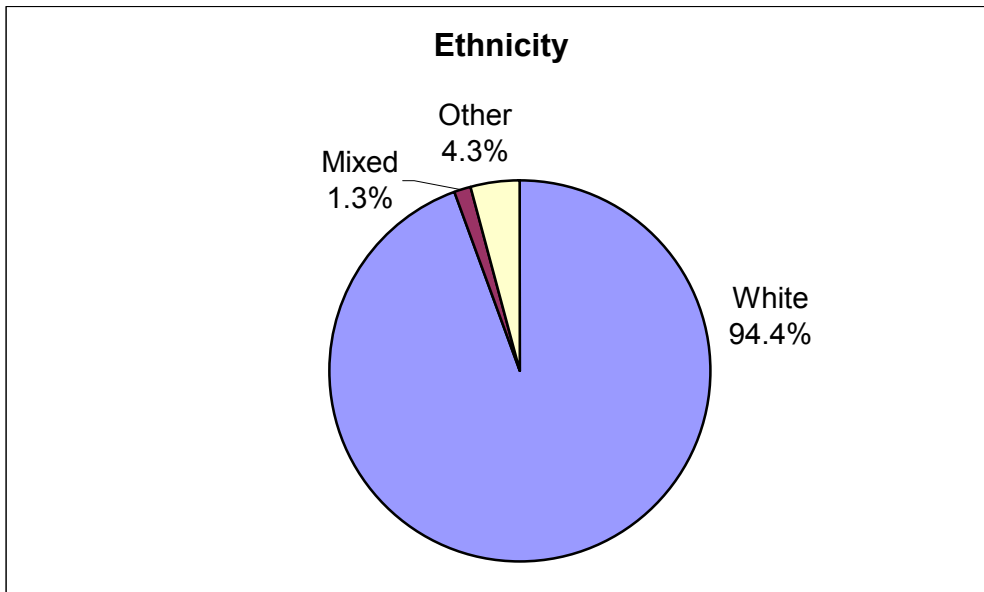
There is a higher proportion of over 65's than the Borough average, and a particularly high proportion over the age of 90 (1.3% compared to the Borough average of 0.8%).



Ewell ward has the second lowest proportion of residents under the age of 18 in the Borough. 4.9% of the population is made up of pre-school children, with 16.2% under the age of 16.

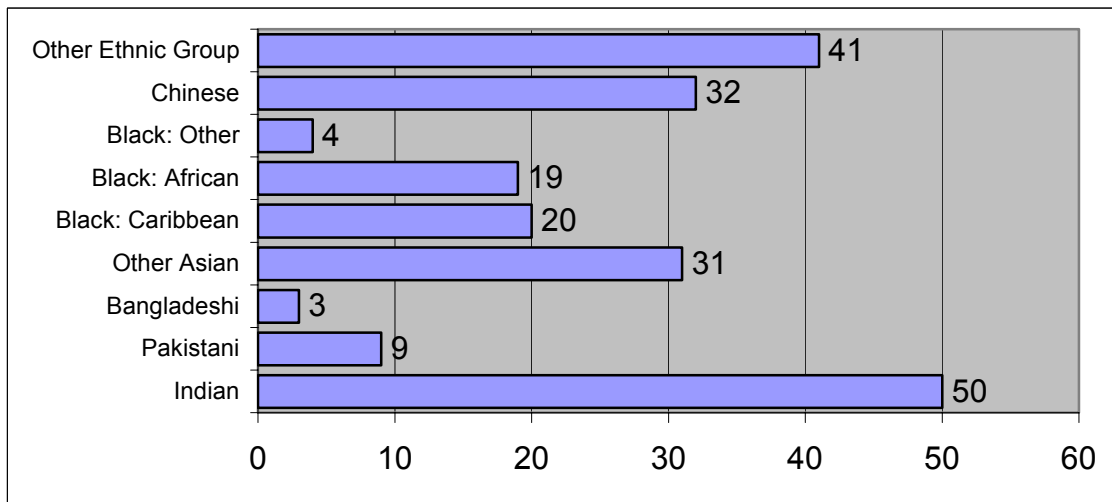


### 2.3 Ethnicity



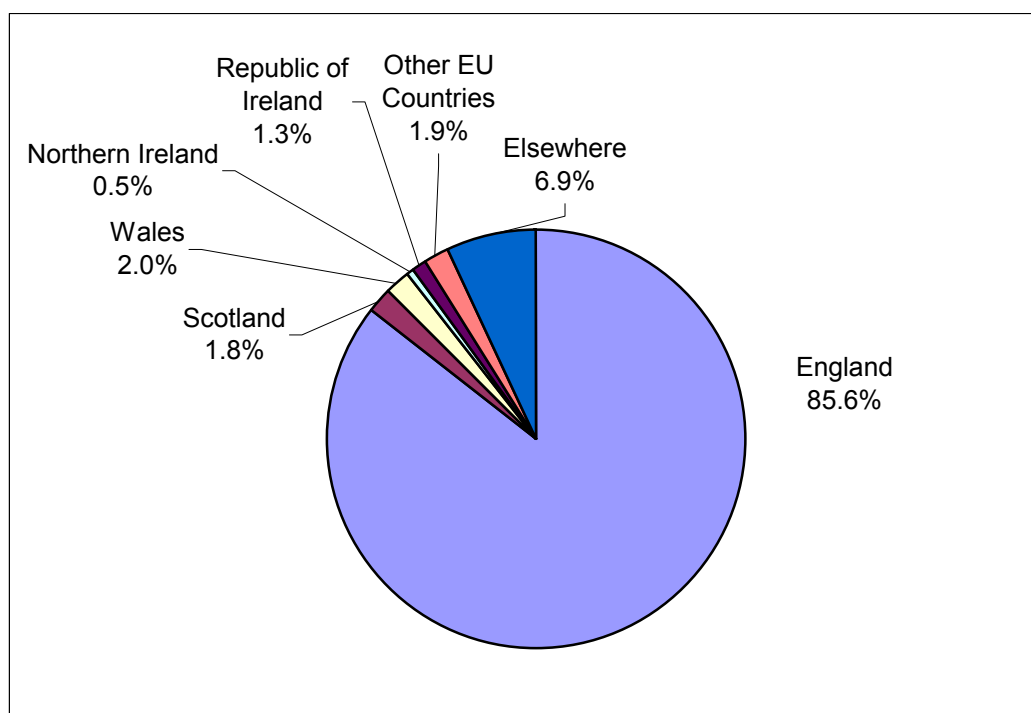
5.6% of the population of the ward do not class themselves as white, the lowest proportion in the Borough. This includes 1.3% who are of a mixed race background. This compares with 8.7% (including 1.8% mixed race) in the whole Borough.

The table below shows the breakdown of residents by ethnic origin in terms of absolute numbers.



The largest ethnic minority is Indian, making up 1.0% of the population in this ward.

## 2.4 Country of Origin



The majority of residents were born in England. 6.9% were born outside of the EU.

## 2.5 Religion

Religion	Ewell	Epsom & Ewell
Christian	73.7%	73%
Buddhist	0.4%	0.5%
Hindu	0.9%	1.8%
Jewish	0.3%	0.4%
Muslim	0.9%	1.9%
Sikh	0.1%	0.1%
Other religions	0.0%	0.3%
No religion	16.3%	14.8%
Religion not stated	7.2%	7.2%

Most people in Ewell are Christian. There are a fairly high proportion of people stating they have no religion.

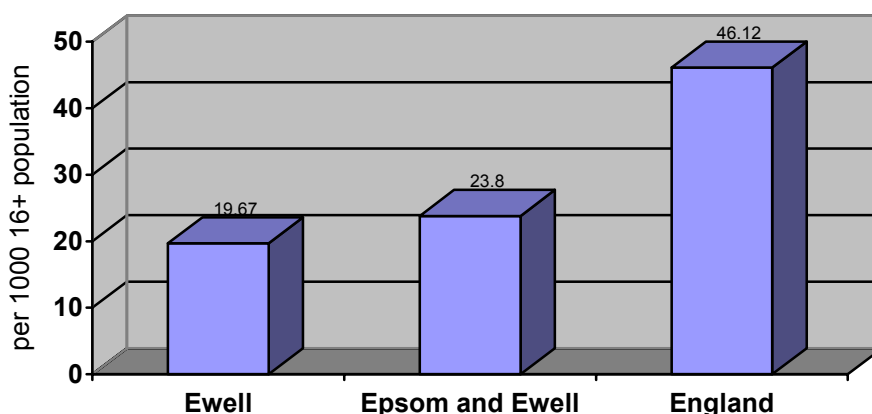
## 2.6 Health and Provision of Care

16.0% of Ewell ward residents have a limiting long-term illness. This compares with 14.3% in the whole Borough. 71.2% of residents describe themselves as in good health, lower than the Borough average of 73.8%. 6.8% class their house as not good higher than the average of 6.0%

	Ewell	Epsom & Ewell
All people who provide unpaid care	9.7%	9.8%
All people who provide unpaid care: 1-19 hours a week	7.2%	7.6%
All people who provide unpaid care: 20-49 hours a week	1.2%	0.9%
All people who provide unpaid care: 50+ hours a week	1.3%	1.4%

9.7% of Ewell residents (471 individuals) provide unpaid care, with 63 individuals (1.3%) providing it for over 50 hours a week

## 2.7 Disability Living Allowance Claimants



Ewell ward has a lower proportion of Disability Living Allowance claimants than the Borough and national averages.

Source: Local Knowledge Website, December 2004

### 3. Household Information

#### 3.1 Number of Households

There are 2,231 households in Ewell, with an average of 2.2 people per household (lower than the Borough average of 2.5).

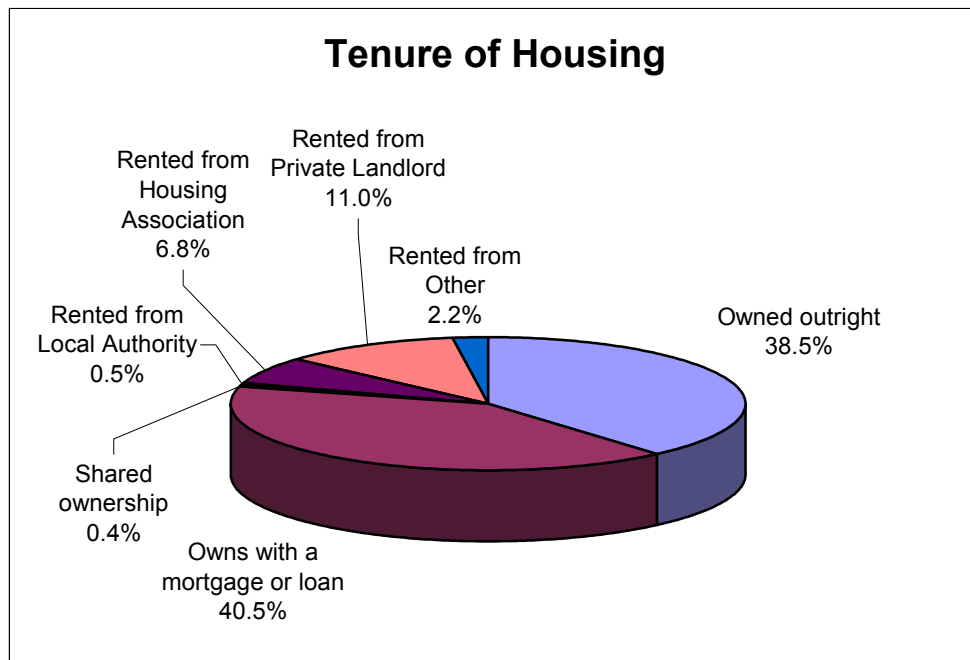
#### 3.2 Household Composition

Households Comprising	Ewell	Epsom & Ewell
One person: Pensioner	17.9%	14.9%
One person: Other	17.6%	12.0%
Households with pensioners only	29.0%	25.5%
Lone parents with dependent children	3.8%	4.6%
Households with dependent children	22.8%	29.6%

Ewell has the second highest proportion of lone pensioner households in the Borough, and there is also a high proportion of other one person households.

There are significantly fewer households with children compared to the Borough average, and a lower proportion of these are with lone parents.

#### 3.3 Housing Tenure



79% of properties are occupied by their owner, lower than the Borough average of 82.3%. Ewell ward does have a high proportion of properties rented from a private landlord or letting agency (11.0% compared to the Borough average of 7.3%)

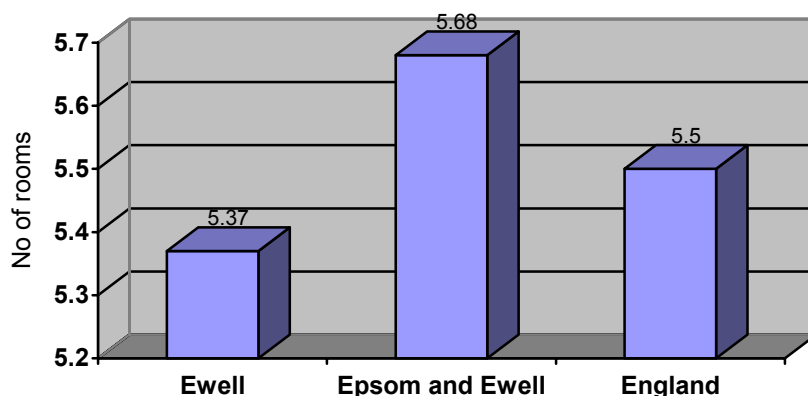
### 3.4 Accommodation Type

Accommodation Type	Ewell
Detached	35.0%
Semi-detached	22.1%
Terraced	17.5%
Purpose built flats or tenement	23.3%
Part of converted house (including bed-sits)	3.8%
In commercial building	3.0%
Caravan or other mobile or temporary structure	0.0%

The accommodation type in Ewell is mixed, with a selection of detached, semi-detached and terraced properties and a high proportion of purpose built flats or tenements. There is also a proportion of housing in commercial buildings compared to the Borough average of 1.6%.

A relatively high proportion of properties, 4.6%, are vacant.

### 3.5 Average Number of Rooms per Household



Ewell ward has a lower average number of rooms per household than the Borough and national averages.

Source: Housing Needs Survey, 2004

### **3.6 Communal Establishments**

There are 6 communal establishments in Ewell ward with a total of 61 residents. 33 of these residents are in residential care homes. 34 residents in medical and care establishments have a limiting long-term illness.

## 4. Employment and Socio-Economic Groups

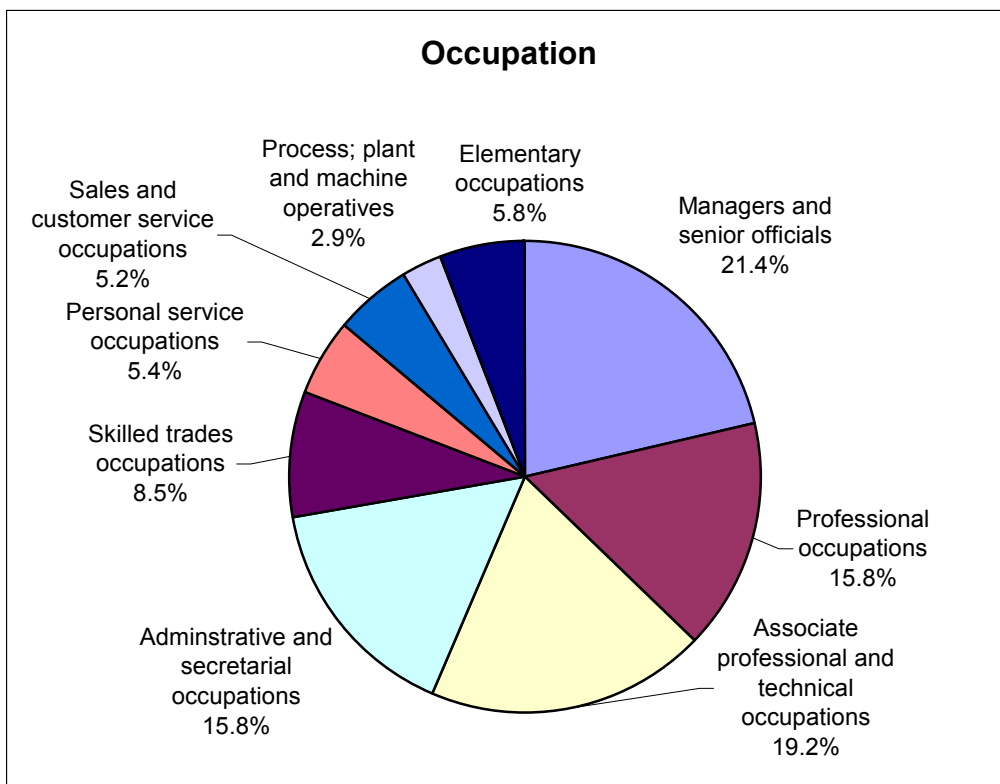
### 4.1 Economic Activity

	Ewell	Epsom & Ewell
Economically active: Part Time	25.82%	11.7%
Economically active: Full time	81.20%	43.9%
Self Employed	16.62%	10.3%
Unemployed	1.6%	1.8%
Retired	15.9%	14.1%

70.3% of Ewell ward residents are economically active, close to the Borough average of 70.5%. Ewell ward has more retired residents than the Borough average, and a slightly lower level of unemployment.

### 4.2 Occupation

There are 2,401 people in employment in Ewell ward. The table below shows the areas in which they work.



The highest proportions of people in Ewell work in associate professional and technical occupations (19.4%) and as managers and senior officials (21.4%). There

are also a high proportion of people working in professional occupations (the Borough average is 14.3%).

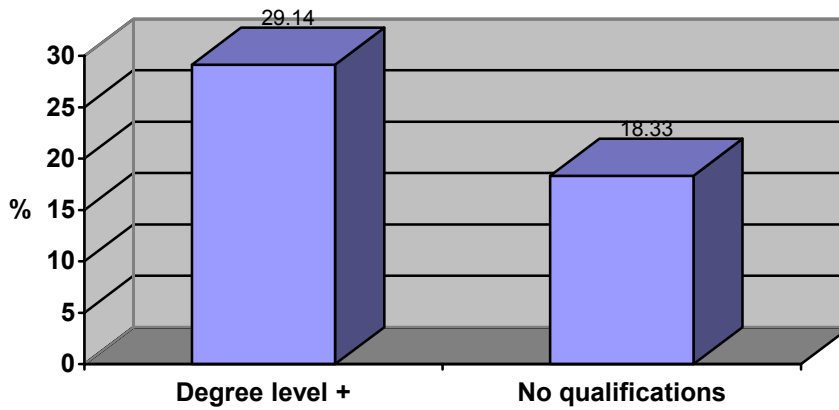
### **4.3 Industry**

	<b>Ewell</b>	<b>Epsom &amp; Ewell</b>
Agriculture, hunting, forestry	0.6%	0.7%
Mining & Quarrying	0.2%	0.4%
Manufacturing	6.6%	7.2%
Electricity, gas and water supply	0.4%	0.5%
Construction	6.2%	6.6%
Wholesale & retail trade; repair of motor vehicles	15.1% (2)	14.9% (2)
Hotels and catering	3.5%	3.4%
Transport, storage and communication	6.6%	7.1%
Financial intermediation	9.0% (4)	8.1% (4)
Real estate; renting and business activities	20.6% (1)	18.9% (1)
Public administration and defence	6.2%	6.7%
Education	7.7% (5)	7.9% (5)
Health and Social Work	10.5% (3)	11.5% (3)
Other	6.8%	6.3%

Numbers in brackets denote the top 5 areas of work

The highest proportion of people living in Ewell ward work in real estate, renting and business activities. 5 people work in mining and quarrying.

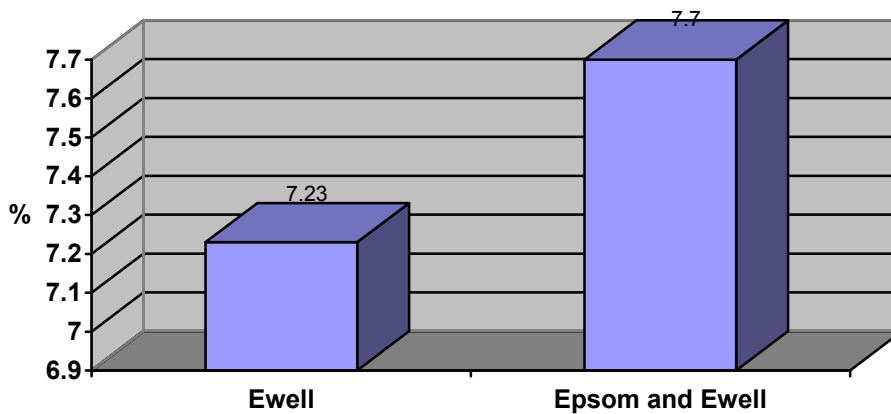
#### 4.4 Level of Qualifications in Working Age Population



Ewell ward has a higher proportion of people educated to degree level + than those with no qualifications.

Source: Local Knowledge Website, December 2004

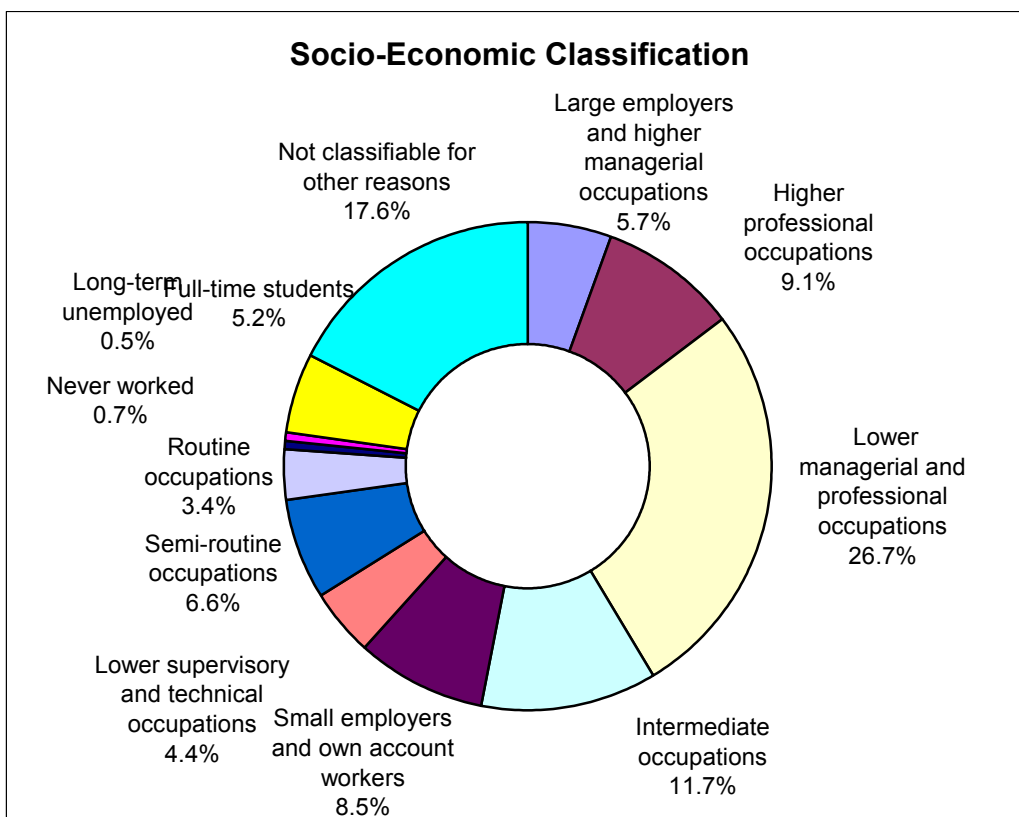
#### 4.5 Share of District Employment



Ewell ward has a smaller share of district employment than the Borough average.

Source: Local Knowledge Website, December 2004

### 4.6 Socio-Economic Classification



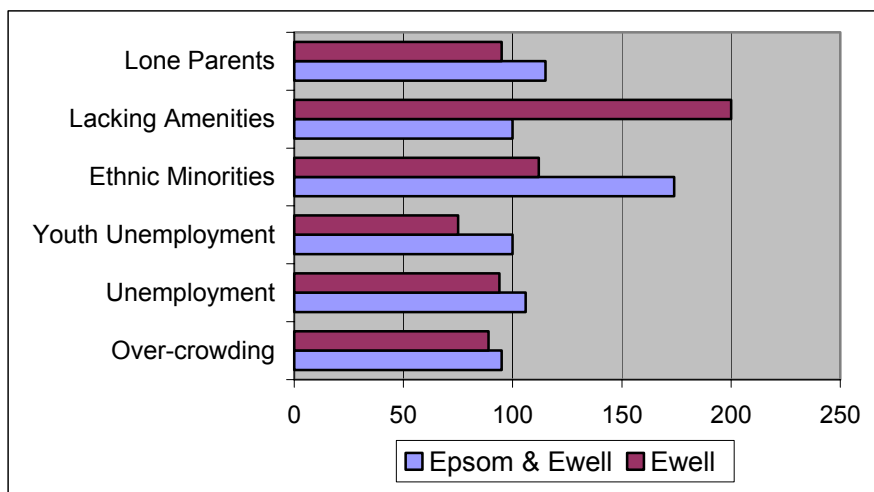
The table above shows the National Statistics Socio-Economic Classification for the 3,507 people aged 16-74 living in Ewell.

Ewell has a high proportion of people in higher professional occupations compared to the Borough average of 7.9%. A lower proportion of people work in semi-routine occupations than the Borough average (8.1%).

Ewell has the joint lowest proportion of people who have never worked in the Borough (the average is 1.7%).

## 5. Social Deprivation

The table below shows indicators for social deprivation for both Ewell and Epsom & Ewell as a whole, as compared to the Surrey average.



Ewell does not have a high level of deprivation compared to both Epsom & Ewell and Surrey as a whole. However there are twice as many properties lacking amenities than the Borough average.

Ewell's score on the DETR index of deprivation has increased considerably from 3.44 to 7.28, higher than the Borough average of 6.83. Using this index, Ewell ranks as the fourth most deprived ward in Epsom & Ewell, and compares well to the rest of Surrey (179/207) i.e. there are 28 wards that are less deprived.

Ewell ward has been split up into three Super Output Areas.

Super Output Area	Rank in Borough (out of 44, 1=most deprived)
Ewell 1	5
Ewell 2	18
Ewell 3	29

The range in rank of the Super Output Areas suggest that some parts of the ward are more deprived than others.

Source: ODPM

## **5.1 Definitions of Super Output Areas by Road**

### **Ewell 1**

Chessington Road, Chichester Court, Church Street, Elm Road, Well By-Pass, Fennells Mead, Garbrand Walk, Kingston Road, London Road, Lyncroft Gardens, Meadow Walk, Mill Lane, Mill View Close, Old Schools Lane, Primrose Walk, Shire Court, Shortcroft Road, Spring Street, St Mary's Close, The Hawthorns, The Headway, The Orchard, The Ridings, Welbeck Close.

### **Ewell 2**

Beaconsfield Place, Church Road, Corbet Road, Dirdene Close, Dirdene Gardens, Dirdene Grove, East Street, Epsom Road, Hessele Grove, Langton Avenue, Larby Place, Nursery Close, Ark Hill Road, Providence Place, Shaw Close, The Kingsway, The Stanfords, West Gardens, West Street, Windmill Avenue, Yeomanry Close.

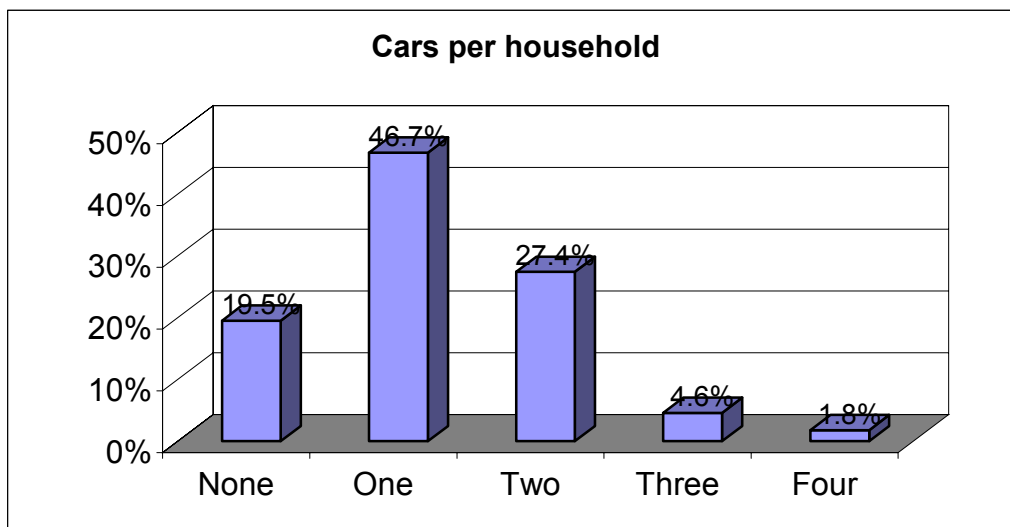
### **Ewell 3**

Cheam Road, Church Street, Cullerne Close, Curvan Close, Epsom Road, Ewell By-Pass, Ewell House Grove, Glyn Close, Hampton Grove, Hazel Mead, High Street, Mongers Lane, Old House Close, Persfield Road, Portway, Portway Crescent, Purberry Grove, Reigate Road, Seymour Mews, Stane Way, Tayles Hill Drive, The Kingsway, Village Gardens, West Street.

*Source: ODPM*

## 6. Transport

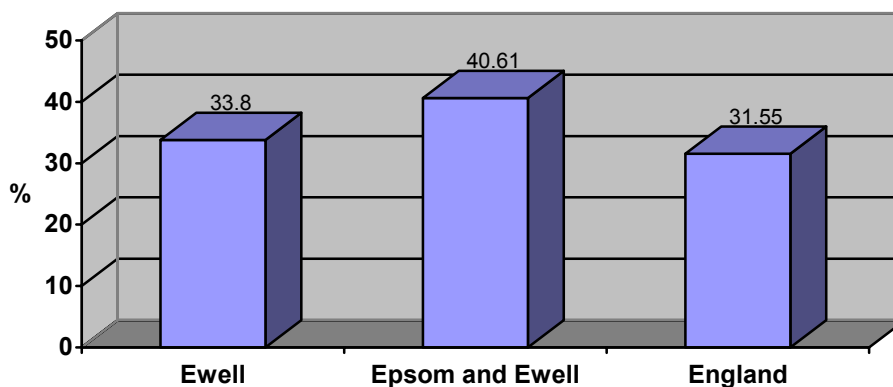
### 6.1 Car Availability



There is an average of 1.23 cars per household in Ewell ward, slightly lower than the Borough average of 1.37. A fairly high proportion of households do not have access to a car, 19.5% compared to the Borough average of 15.3%.

Source: Local Knowledge Website, December 2004

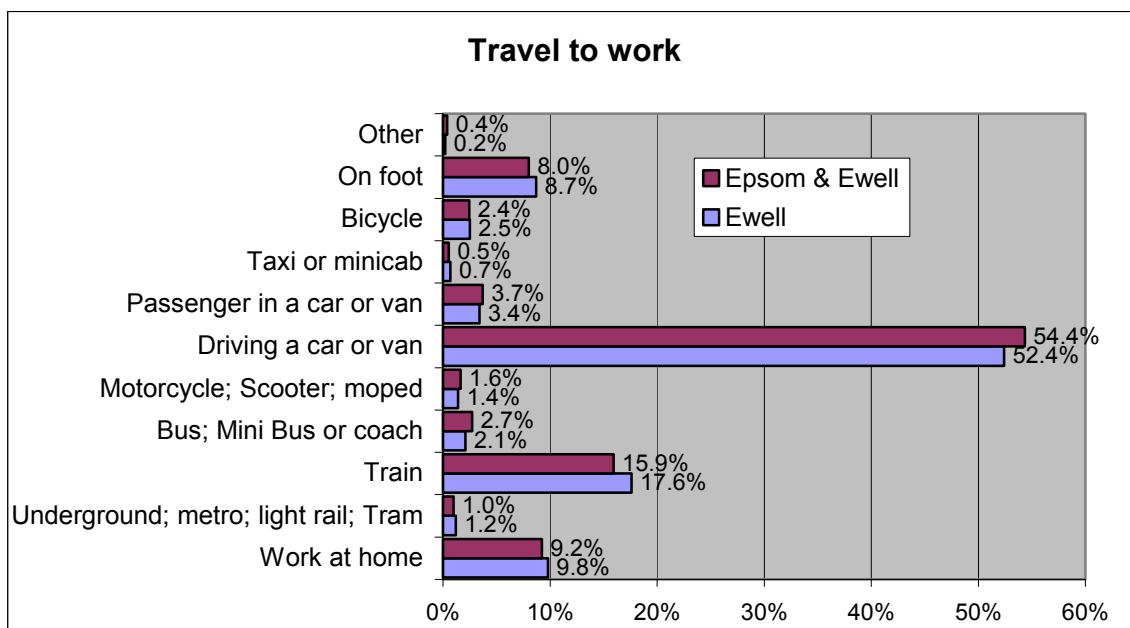
### 6.2 Proportion of Households with 2+ Cars



Ewell ward has a higher proportion of households with 2+ cars than the national average but lower than the Borough average.

Source: Local Knowledge Website, December 2004

### 6.3 Travel to Work



Driving to work is the most popular option for the residents of Ewell ward, with 52.4% of people using this option. More people choose to walk to work than the Borough average and more get the train.

Source: Local Knowledge Website, December 2004

## 7. Crime

The crime rate for all crime in Ewell ward is 9%. It is ranked fourth in the Borough.

Ewell ward is one of the hotspots for motor vehicle crime in the Borough. This crime type is on the increase and is defined as one of the priority areas.

Source: Crime Audit, 2004