



WARD PROFILE

NONSUCH



The Mansion at Nonsuch Park

February 2005



Contents

Notes and Definitions	3
Summary of Nonsuch Ward	4
1. Introduction	5
2. Population	7
2.1 Population Density.....	7
2.2 Age Profile	7
2.3 Ethnicity	9
2.4 Country of Origin	10
2.5 Religion	10
2.6 Health and Provision of Care.....	11
2.7 Disability Living Allowance Claimants.....	11
3. Household Information	12
3.1 Number of Households.....	12
3.2 Household Composition	12
3.3 Housing Tenure	12
3.4 Accommodation Type.....	13
3.5 Average Number of Rooms per Household.....	13
3.6 Communal Establishments.....	13
4. Employment and Socio-Economic Groups	14
4.1 Economic Activity	14
4.2 Occupation	14
4.3 Industry.....	15
4.4 Level of Qualifications in Working Age Population	16
4.5 Share of District Employment	16
4.6 Socio-Economic Classification	17
5. Social Deprivation	18
5.1 Definition of Super Output Areas by Road.....	19
6. Transport	20
6.1 Car availability	20
6.2 Proportion of all Households with 2+ Cars.....	20
6.3 Travel to work.....	21
7. Crime.....	21

Notes and Definitions

Ward profiles have been compiled using information from the 2001 Census of Population and other sources for example, Local Knowledge website, Housing Needs Survey 2004 and the Crime Audit 2004.

A household comprises one person living alone, or a group of people (not necessarily related) living at the same address with common housekeeping – that is, sharing either a living room or a sitting room or at least one meal a day.

All people who were working in the week before the Census or were looking for work and were available to start work within 2 weeks are described as economically active. Full time students who are economically active are included but are identified separately in the classification. The economic activity questions are only asked of people aged 16 to 74. The proportion given is the percentage of the population aged 16-74.

The National Statistics Socio-economic Classification (NS-SEC) provides an indication of socio-economic position based on occupation. It is an Office for National Statistics standard classification. Not classifiable for other reasons includes people who have not been coded and those who cannot be allocated to an NS-SEC category.

A dependent child is a person aged 0 to 15 in a household (whether or not in a family) or aged 16 to 18 in full-time education and living in a family with his or her parent(s).

An overcrowded household has an occupancy rating of –1 or less. The Occupancy rating provides a measure of under occupancy and over crowding. It relates the actual number of rooms to the number of rooms ‘required’ by the members of the household (based on a relationship between them and their ages). A rating of –1 means that the household has one too few rooms.

Households lacking amenities are those without central heating and/or without sole use of bath/shower and toilet.

The DETR Index of Multiple Deprivation 2004 calculates values for the relative level of need, derived from 6 main indices. Higher values indicate greater need. The UK average is 21.67. The 7 domain indices are: income, employment, health deprivation and disability, education skills and training, barriers to housing and services, living environment and crime.

NB. Figures may not add up to 100% due to rounding.

Where data has not been sourced it is from the 2001 Census. Data not from the Census is sourced separately underneath the corresponding data.

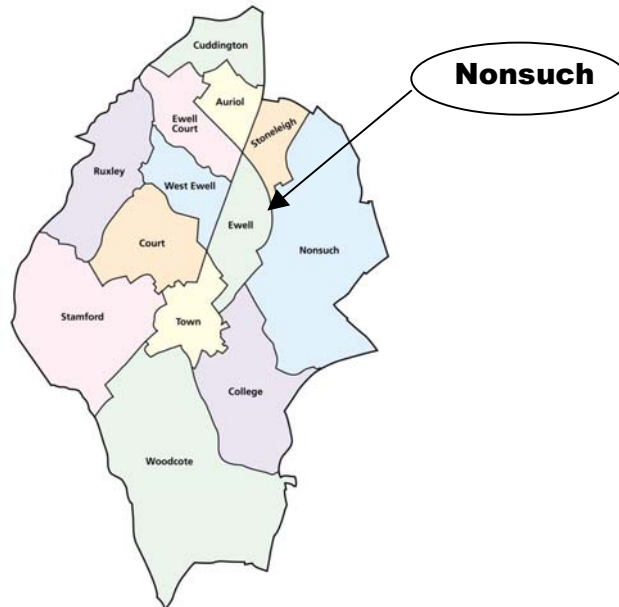
If you have any comments or queries on any aspect of the profile, please contact Sara Childs or Kate Cheminais in the Service Improvement Unit on 01372 732000.

Summary of Nonsuch Ward

Location of ward in the Borough	Centre east
Population	5194
Population density	8.5 people per hectare
Size of Ward in Hectares	609
Age profile	Greatest age group proportion 45-64 (32.3%)
Ethnicity	9.9% ethnic minorities
DLA claimants	10.73 per 1000 16+ population
Long-term Limiting Illness	16% of population
No of households	1899
Average number of people per household	2.7
Tenure	96.7% owner occupier
Accommodation type	91.7% detached
Economically active	66.1%
Occupation	26.4% managers and senior officials
Industry	20.2% real estate; renting and business activities
Share of district employment	7.43%
Level of degree+ qualification	32.14%
Social deprivation DETR Index 2004	3.09
Car availability	1.84 cars per household
Proportion of 2+ car households	64.74%
Travel to work	58.3% car or van
Proportion of Crime	3% of all crime committed in the Borough

1. Introduction

Nonsuch is in the east of the Borough. It shares a border with the London Borough of Sutton to the east and College, Ewell and Stoneleigh wards to the west.



In medieval times the area of Nonsuch was part of the parish of Cuddington. The village itself was situated where Nonsuch Park is today, and was small even by medieval standards, though the parish stretched up through the modern Stoneleigh, Auriol and Cuddington. In 1538, Henry VIII decided he wanted his new hunting lodge built there so the village of Cuddington was destroyed.

The palace was commissioned to celebrate 30 years of Henry's reign. The palace was to outshine any other building of its time, hence the name 'non such'. The building was splendid and grand, but Henry died in 1547 before it was completed. Nonsuch's connections with royalty continued, however, with visits from Elizabeth I and James I.

In 1671, the palace was passed into the hands of Barbara Castlemaine, a mistress of Charles II. She led an extravagant lifestyle and in order to fund it, ordered the demolition of the palace, which was by this time in a poor state of repair.

After the demolition of the palace, the parklands were sold off. The little park passed into the hands of Samuel Farmer who built the mansion that survives today. The remains of the palace were levelled off and turfed over. The Great Park was sold off and used for farming, and was later developed for housing in the early 20th century.

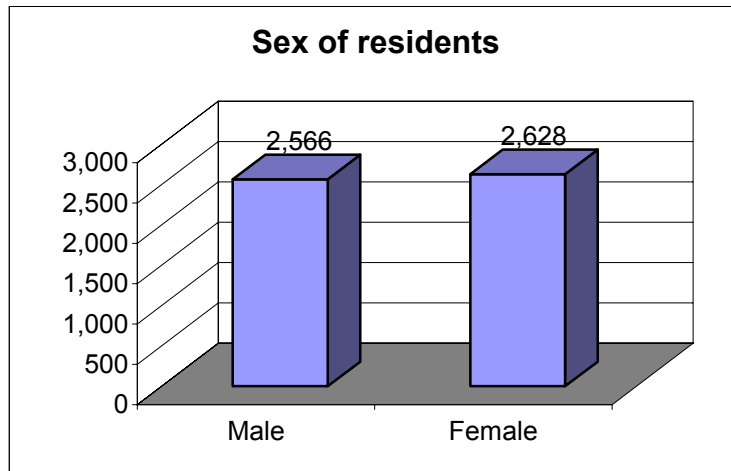
The site of the palace could well have been built over in the same way that the Great Park was under the estates in Worcester Park and Stoneleigh. However, as building work began to encroach on the edge of the little park, it was realised what a shame it would be to lose such a beautiful and historic area. The local councils, including Epsom & Ewell, Sutton and Surrey, banded together and in 1937 bought the park for

the public. The site of the palace was subject to a large scale excavation in 1959, before it was once again covered over.

Since the Census, Nonsuch ward has been affected by boundary changes. The southern most part of the ward, to the east of the railway, was previously part of Ewell ward. These changes are taken into account in the census information from 2001.

2. Population

Nonsuch ward has a population of 5,194 people, an increase of 24% from 1991. This increase is due in part to the areas gained by the ward from Ewell ward. Females slightly out-number males (a trend seen both Borough and county wide), with 2,628 females compared to 2,566 males.

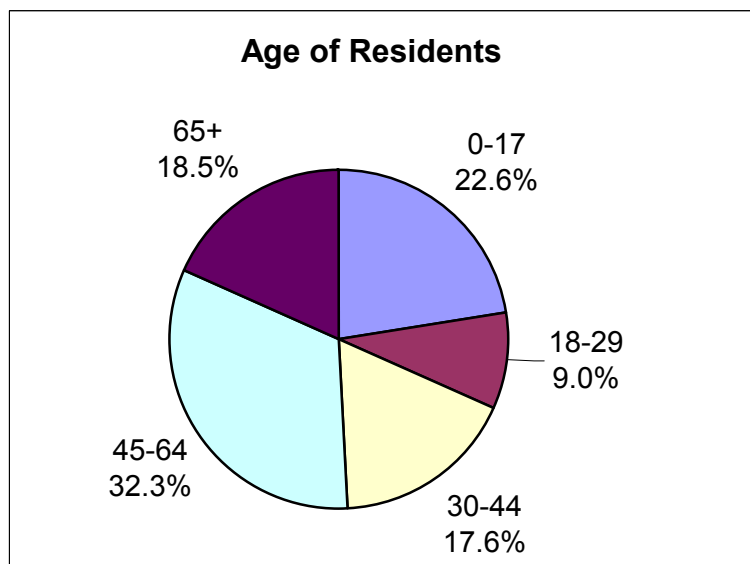


Please note that the 2001 Census data is the most current population data at ward level.

2.1 Population Density

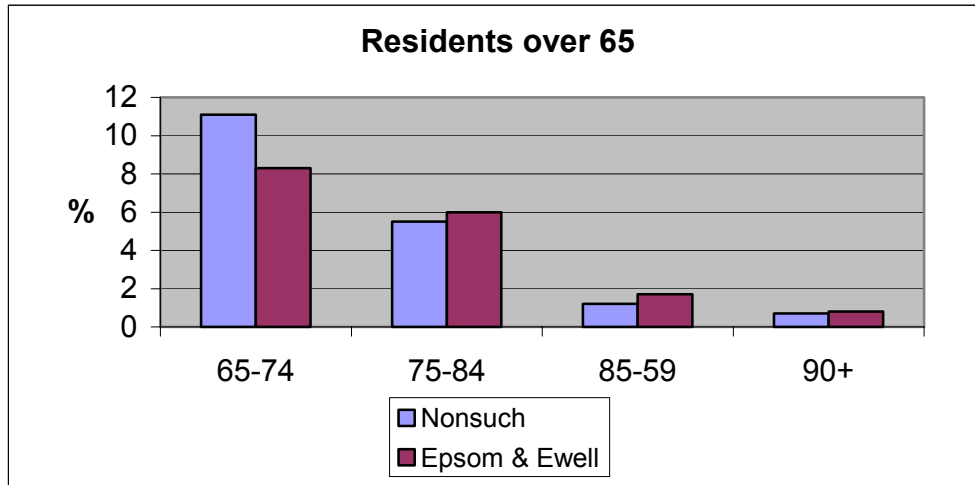
Nonsuch covers an area of 609 hectares and has a population density of 8.5 people per hectare. This makes it the second least densely populated ward in the Borough.

2.2 Age Profile

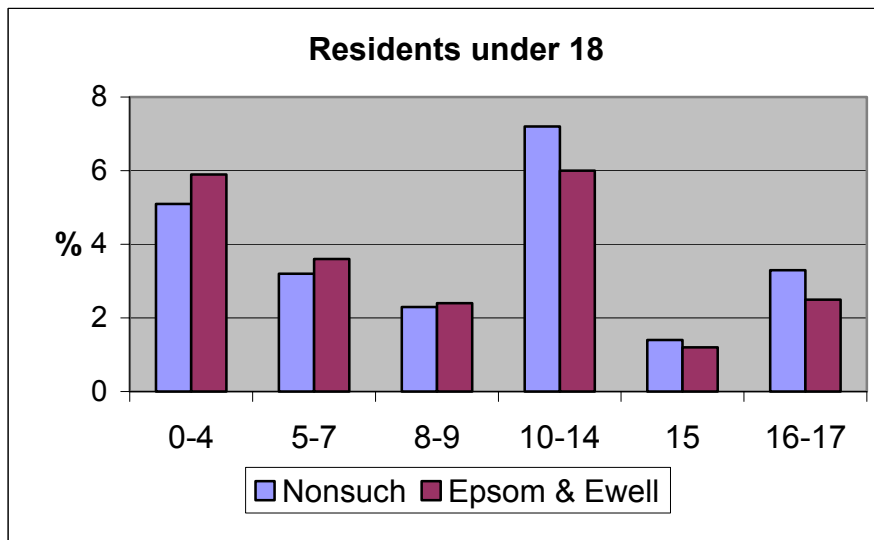


The population of Nonsuch ward is old compared to the Borough average. Residents over the age of 45 make up 50.8% of residents, compared to 43% in the whole Borough. The ward has the lowest proportion of 18-29 year olds in the Borough.

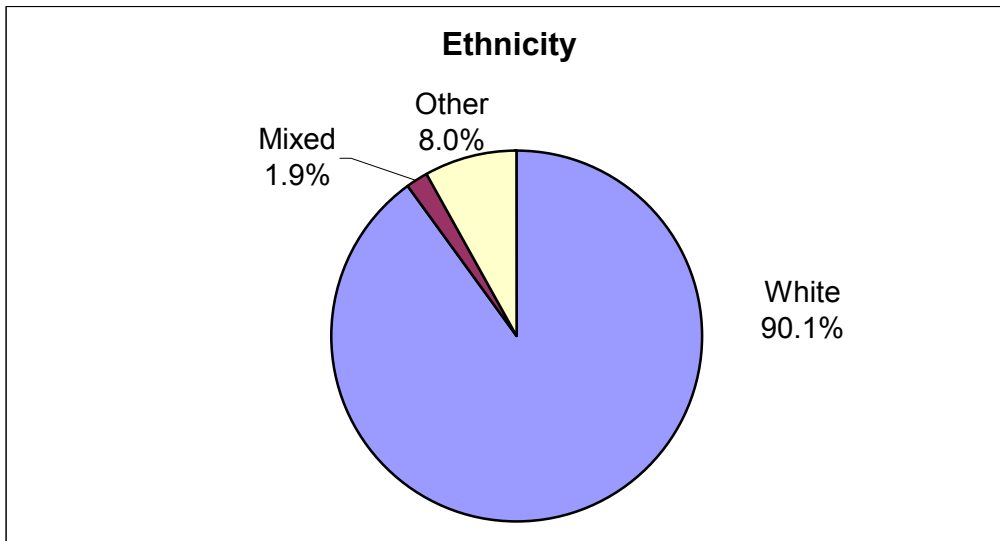
Nonsuch has fewer residents over 65 than the Borough average, although it has the highest proportion of residents aged between 65 and 74.



Nonsuch has a slightly higher proportion of residents aged under 18 compared to the Borough average. 5.1% of the population is made up of pre-school children with 19.3% of residents under the age of 16.

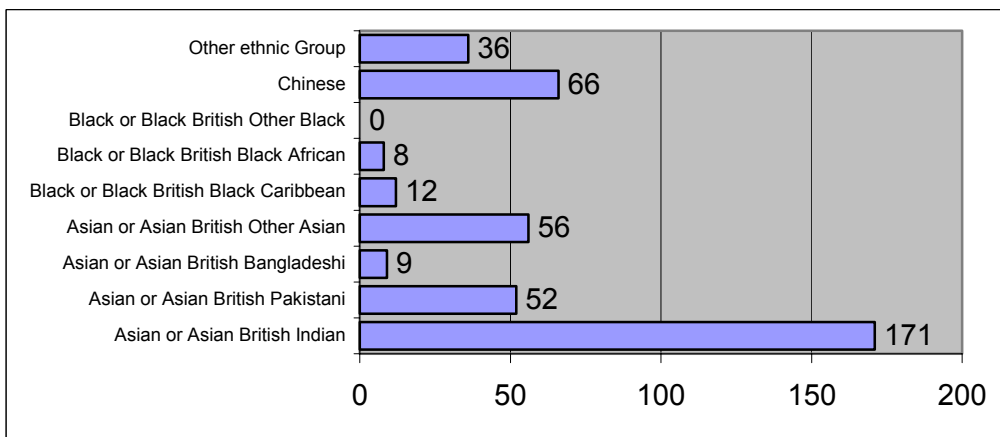


2.3 Ethnicity



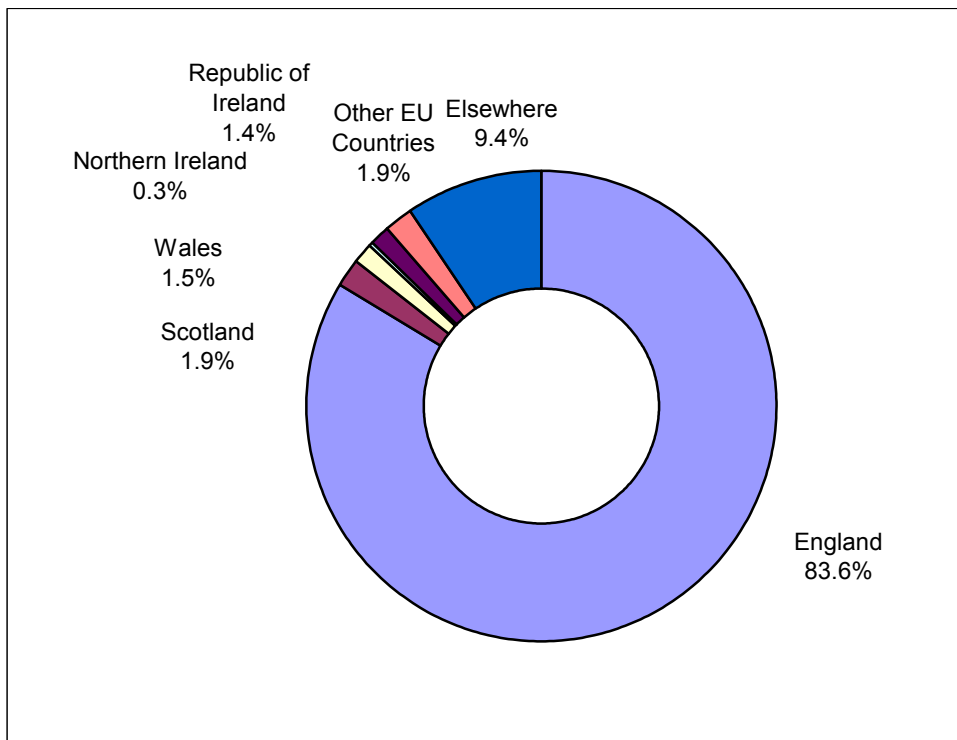
9.9% of the population of the ward do not class themselves as white, which include 1.9% of who are of a mixed race background. This compares with 8.7% (including 1.8% mixed race) in the whole Borough.

The table below shows the breakdown of residents by ethnic origin in terms of absolute numbers.



The largest minority is Asian or Asian British Indian, which makes up 3.3% of the total population, the largest percentage of this group in the Borough.

2.4 Country of Origin



The majority of residents (83.6%) were born in England. 9.4% were born outside the EU.

2.5 Religion

Religion	Nonsuch	Epsom & Ewell
Christian	74.6%	73%
Buddhist	0.4%	0.5%
Hindu	2.8%	1.8%
Jewish	0.9%	0.4%
Muslim	2.9%	1.9%
Sikh	0.3%	0.1%
Other religions	0.2%	0.3%
No religion	11.7%	14.8%
Religion not stated	6.4%	7.2%

There are a slightly higher percentage of Christians in Nonsuch than Epsom & Ewell as a whole. Nonsuch has the highest proportion of Jews in the Borough, and a high proportion of both Hindus and Muslims.

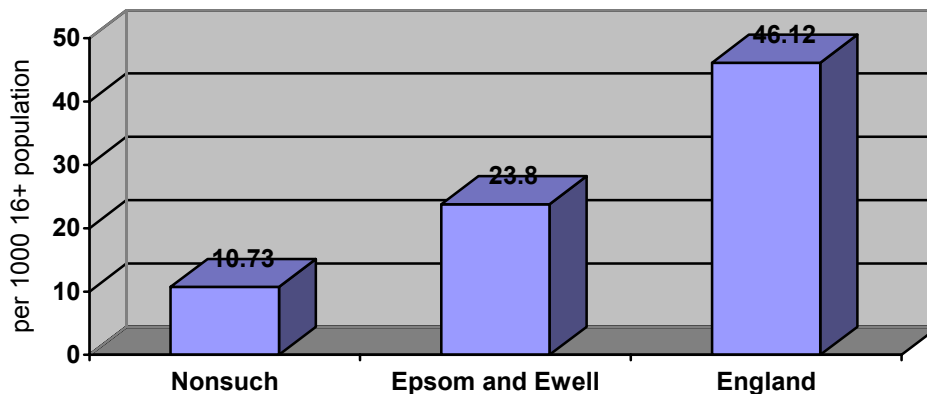
2.6 Health and Provision of Care

11.8% of Nonsuch residents have a limiting long-term illness, the second lowest proportion on the Borough where the average is 14.3%. Nonsuch has the highest proportion of residents stating their health is good in Borough (78.0% compared to the average 73.8%). Only 4.7% state that their health is not good (the Borough average is 6.0%).

	Nonsuch	Epsom & Ewell
All people who provide unpaid care	11.1%	9.8%
All people who provide unpaid care: 1-19 hours a week	8.9%	7.6%
All people who provide unpaid care: 20-49 hours a week	1.0%	0.9%
All people who provide unpaid care: 50+ hours a week	1.2%	1.4%

Nonsuch has a higher proportion of residents providing unpaid care than the Borough average (577 individuals). 62 people in Nonsuch provide unpaid care for over 50 hours a week.

2.7 Disability Living Allowance Claimants



Nonsuch has a considerably lower proportion of Disability Living Allowance Claimants than the Borough and national averages. It has the lowest rate in the Borough.

Source: Local Knowledge Website, December 2004

3. Household Information

3.1 Number of Households

There are 1,899 households in Nonsuch, with an average of 2.7 people per household. This is the highest in the Borough, where the average is 2.5.

3.2 Household Composition

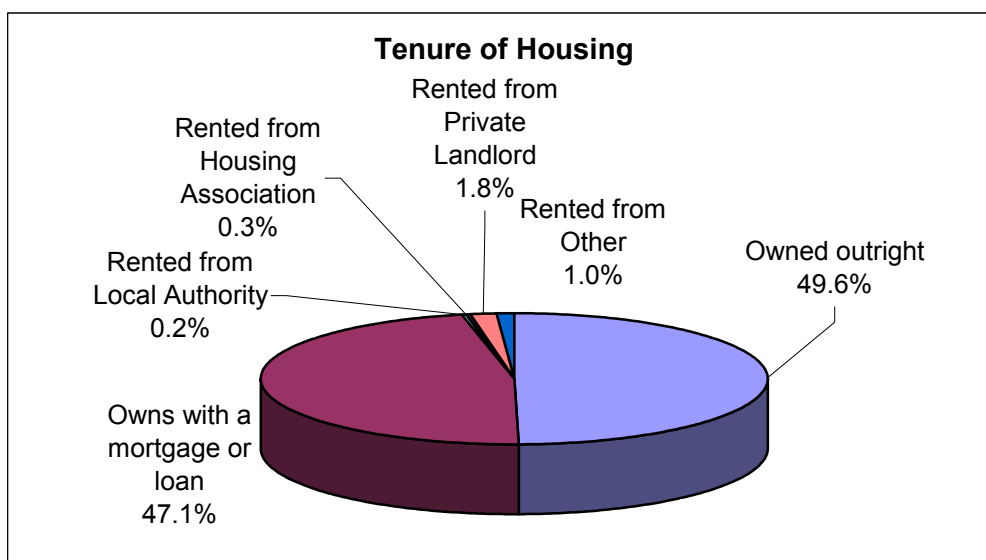
Households Comprising	Nonsuch	Epsom & Ewell
One person: Pensioner	10.5%	14.9%
One person: Other	3.8%	12.0%
Households with pensioners only	27.2%	25.5%
Lone parents with dependent children	1.6%	4.6%
Households with dependent children	33.7%	29.6%

The above table does not add up to 100% as it contains only the information thought to be significant.

Nonsuch has the lowest proportion of one-person households in the Borough. However, there are a higher proportion of households with pensioners only.

Nonsuch has the lowest number of households consisting of lone parents with dependent children, but a high proportion of households with dependent children compared to the Borough average.

3.3 Housing Tenure



96.7% of properties in Nonsuch ward are occupied by their owner, the highest proportion in the Borough, with a particularly high percentage owned outright (49.6%, the Borough average is 37.1%).

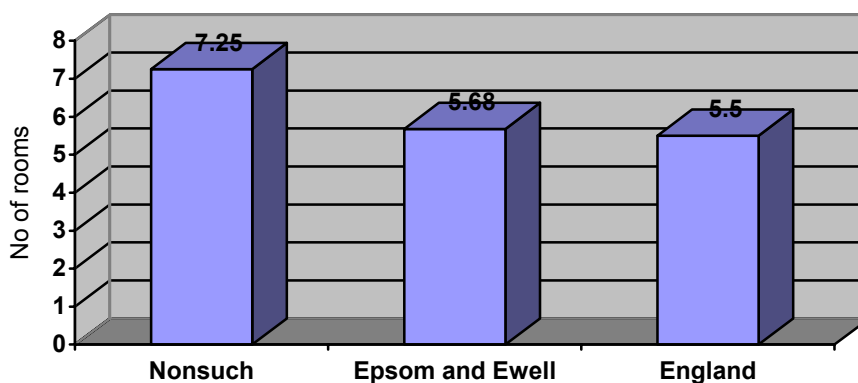
Due to the high number of owner occupied properties in Nonsuch ward, there are far fewer that are rented.

3.4 Accommodation Type

Accommodation Type	Nonsuch
Detached	91.7%
Semi-detached	6.4%
Terraced	1.3%
Purpose built flats or tenement	1.1%
Part of converted house (including bed-sits)	0.8%
In commercial building	0.2%
Caravan or other mobile or temporary structure	0.0%

The vast majority of houses in Nonsuch ward are detached. 1.2% of properties are vacant.

3.5 Average Number of Rooms per Household



Nonsuch ward has a higher average number of rooms per household than both the Borough and national averages. Nonsuch is ranked first in the Borough for this indicator.

Source: Housing Needs Survey, 2004

3.6 Communal Establishments

Communal establishments include hospitals, retirement homes, other medical and care establishments (for example nursing homes or hospices), hostels and prisons.

There are 3 communal establishments in Nonsuch ward, with a total of 32 residents. 26 of there are resident in nursing homes. 9 residents living in medical and care establishments have a limiting long-term illness.

4. Employment and Socio-Economic Groups

4.1 Economic Activity

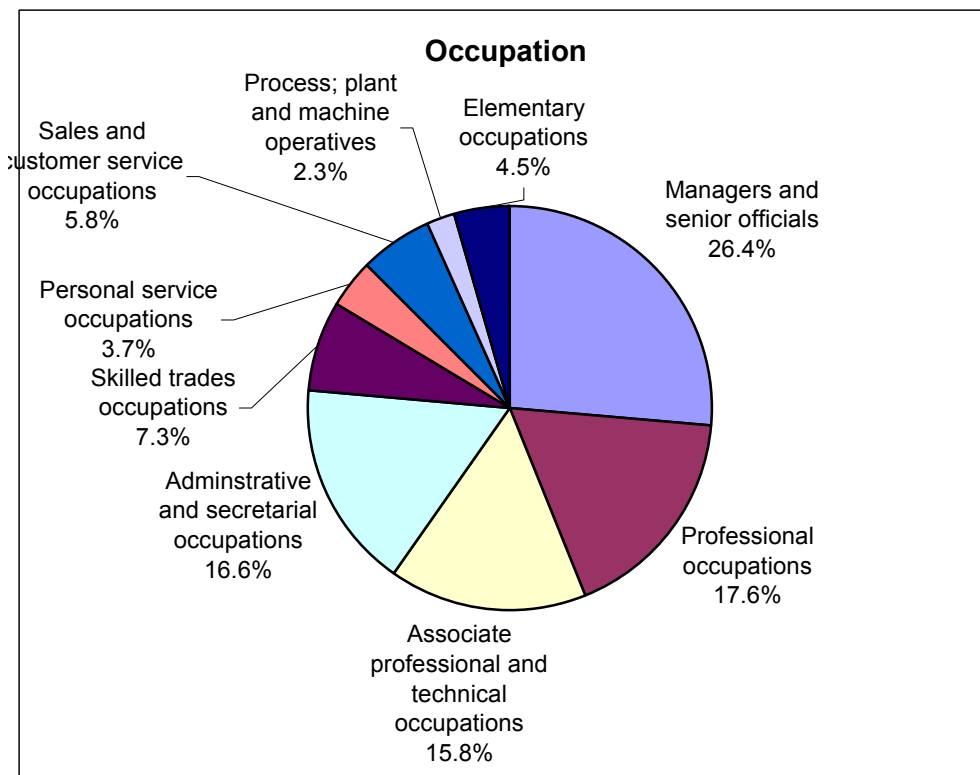
	Nonsuch	Epsom & Ewell
Economically active: Part Time	11.8%	11.7%
Economically active: Full time	36.1%	43.9%
Self Employed	14.4%	10.3%
Unemployed	1.1%	1.8%
Retired	17.6%	14.1%

The above table does not add up to 100% as it contains only the information thought to be significant.

66.1% of the ward's residents are economically active. This is the lowest proportion in the Borough, where 70.5% of people are active. Unemployment in this ward is the lowest in the Borough, and there is a fairly high percentage of people who are retired.

4.2 Occupation

There are 2,630 people in employment in Nonsuch ward. The chart below shows the areas in which they work.



The highest proportions of people in Nonsuch work as managers and senior officials (26.4%), the highest proportion in the Borough (the average is 19.5%). The ward has

the lowest proportion of people working in personal service occupations, and low percentages working in sales and customer services, as plant and machine operatives and in elementary occupations.

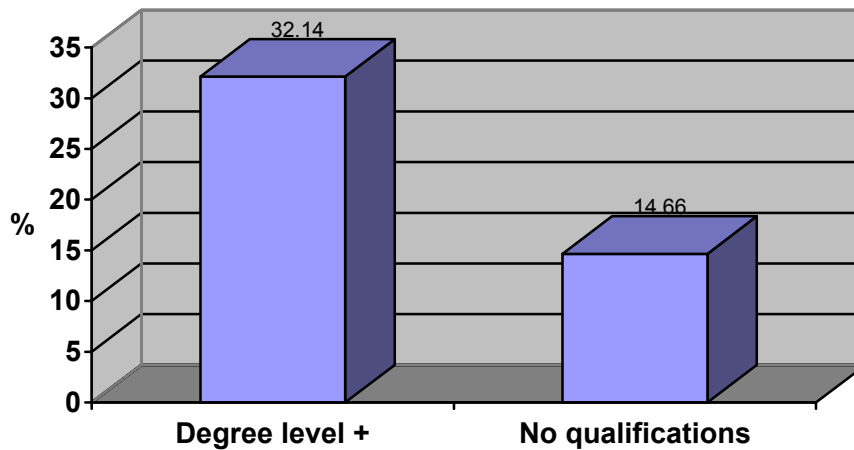
4.3 Industry

	Nonsuch	Epsom & Ewell
Agriculture, hunting, forestry	0.6%	0.7%
Mining & Quarrying	0.5%	0.4%
Manufacturing	8.1%	7.2%
Electricity, gas and water supply	0.3%	0.5%
Construction	7.6%	6.6%
Wholesale & retail trade; repair of motor vehicles	13.2% (2)	14.9% (2)
Hotels and catering	2.7%	3.4%
Transport, storage and communication	5.2%	7.1% (4)
Financial intermediation	9.9% (3)	8.1%
Real estate; renting and business activities	20.2% (1)	18.9% (1)
Public administration and defence	7.0%	6.7%
Education	9.2% (5)	7.9% (5)
Health and Social Work	9.4% (4)	11.5% (3)
Other	6.0%	6.3%

Numbers in brackets denote the top 5 areas of work

The highest proportion of people living in Nonsuch work in real estate; renting and business activities, and there are the highest number of people working in financial intermediation in the Borough. 7 individuals work in electricity, gas and water supply.

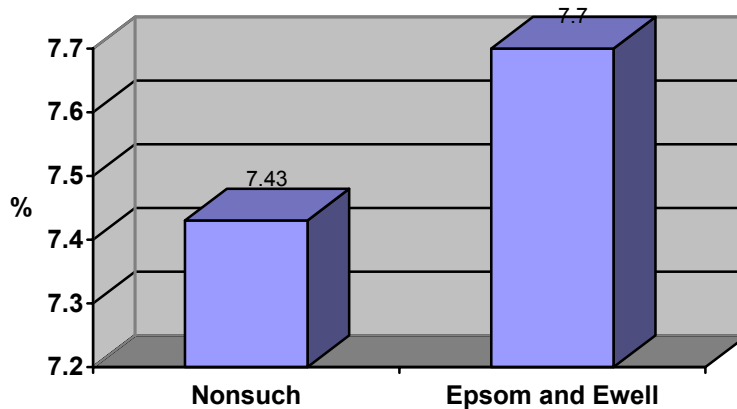
4.4 Level of Qualifications in Working Age Population



Nonsuch ward has a significantly higher proportion of people educated to degree level+ compared with those without qualifications.

Source: Local Knowledge Website, December 2004

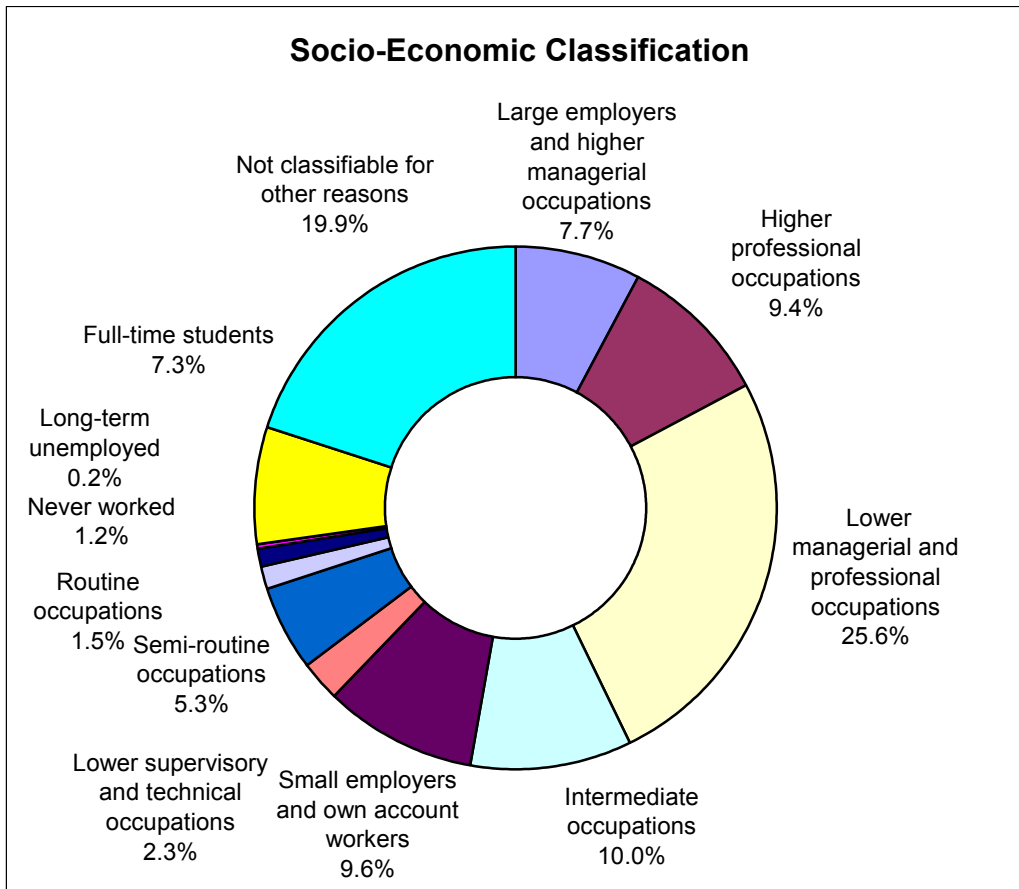
4.5 Share of District Employment



Nonsuch ward has a lower share of district employment than the Borough average.

Source: Local Knowledge Website, December 2004

4.6 Socio-Economic Classification



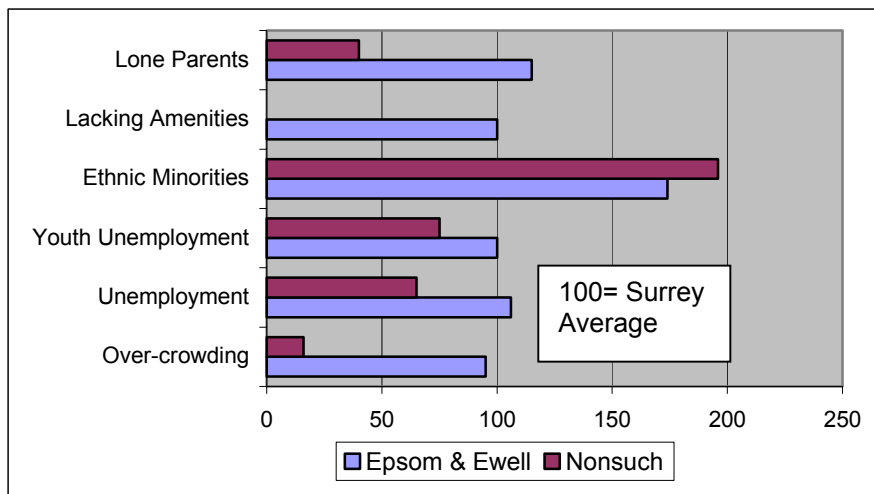
The table above shows the National Statistics Socio-Economic Classification for the 2,465 people aged 16-74 living in Nonsuch.

Nonsuch ward has the highest proportion of people in higher managerial and higher professional occupation in the Borough (the average is 5.3%)

Nonsuch ward has the joint lowest proportion of people who are long time unemployed and is below the Borough average (1.7%) for those who have never worked.

5. Social Deprivation

The table below shows indicators for social deprivation for both Nonsuch ward and Epsom & Ewell as a whole, as compared to the Surrey average.



Nonsuch ward does not have a high level of social deprivation compared to Surrey as a whole, and is below the Surrey average for the indicators. There are no properties in the ward lacking amenities.

Nonsuch's score on the DETR index of deprivation is 3.09, lower than the Borough average (6.83). Using this index, Nonsuch is rated as the 3rd least deprived ward in the Borough, and is in the top half of all wards in Surrey (166/207).

Nonsuch ward is split into three Super Output Areas.

Super Output Area	Rank in Borough (out of 44, 1=most deprived)
Nonsuch 1	40
Nonsuch 2	39
Nonsuch 3	36

The ranks for Super Output Areas in Nonsuch indicate a low level of deprivation across the ward.

Source: ODPM

5.1 Definition of Super Output Areas by Road

Nonsuch 1

Banstead Road, Barnard Place, Beverley Close, Bridleway Close, Burford Lane, Chatsfield, Cheam Road, Conaways Close, Ewell By-Pass, Ewell Downs Road, Fairview, Higher Green, Howell Hill Close, Howell Hill Grove, Lodge Close, Longdown Lane North, Reigate Road, Springfield Road, St Normans Way, Station Approach, The Bridle Path, The Green.

Nonesuch 2

Abinger Avenue, Albury Avenue, Arundel Avenue, Birchfield Grove, Bramley Road, Buckland Road, Cheam Road, Cheyham Gardens, Ewhurst Close, Gomshall Road, Hays Walk, Hillside Road, Holmwood Road, Nonsuch Walk, Northey Avenue, Queensmead Avenue, Ranmore Road, Sandy Croft, Shere Avenue, Westcott Way.

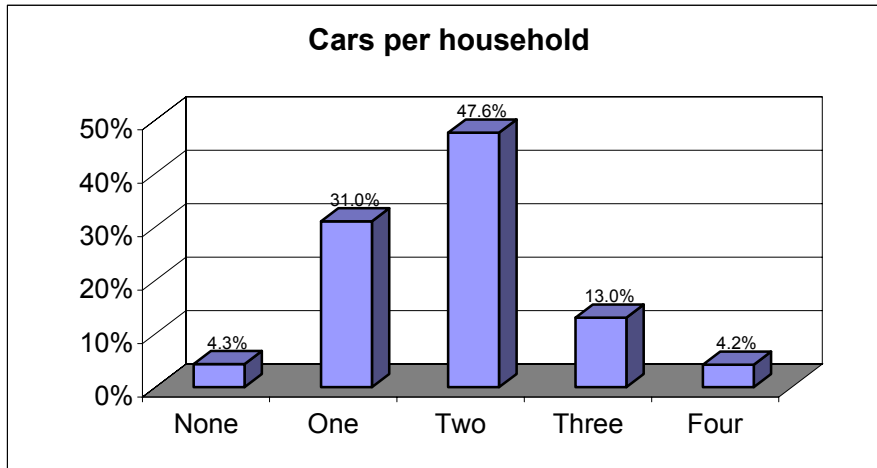
Nonesuch 3

Aragon Avenue, Arundel Avenue, Boleyn Avenue, Castle Avenue, Castle Way, Castlemaine Avenue, Cleves Avenue, Ewell By-Pass, Fairfax Avenue, Fir Walk, Holmwood Close, Holmwood Road, Howard Avenue, London Road, Nonsuch Court Avenue, Nonsuch Walk, Seymour Avenue, The Avenue, West Drive.

Source: ODPM

6. Transport

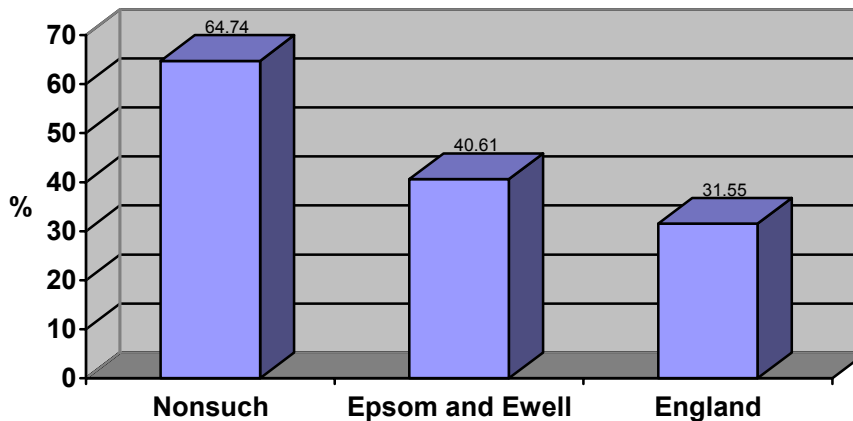
6.1 Car availability



There is an average of 1.84 cars per household in Nonsuch ward, higher than the Borough average of 1.37. The ward has the fewest households with no car in the Borough (4.3% in Nonsuch compared to 15.3% in Epsom & Ewell), and the highest proportion having two, three or four cars.

Source: Local Knowledge Website, December 2004

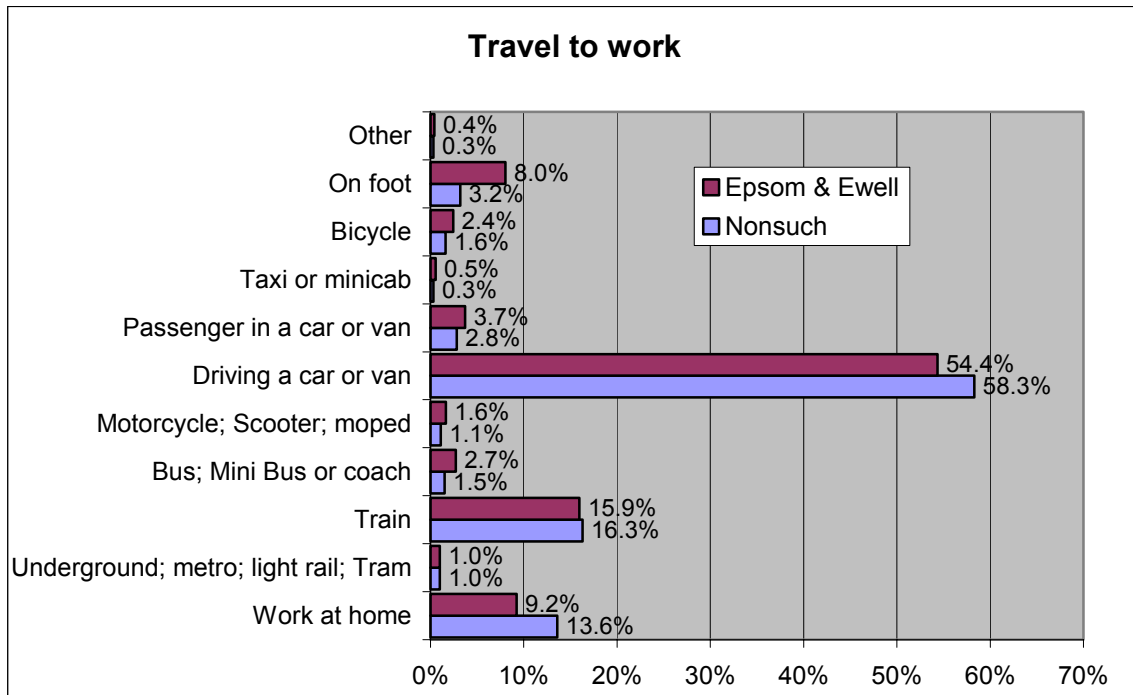
6.2 Proportion of all Households with 2+ Cars



Nonsuch ward has a significantly larger proportion of households with 2+ cars than the national and Borough averages. It is ranked first in the Borough for this indicator.

Source: Local Knowledge Website, December 2004

6.3 Travel to work



Driving to work is the most popular option for the residents of Nonsuch ward, with over half of people using this option. Nonsuch has the highest proportion of people working from home in the Borough.

Source: Local Knowledge Website, December 2004

7. Crime

Nonsuch ward has a crime rate of 3% - this out of the proportion of all crime in the Borough. There is no particular crime that is predominant in this ward.

Source: Crime Audit, 2004